

1cm 2 3 4 5

A1

1"

2"

3"

RALPH PINK



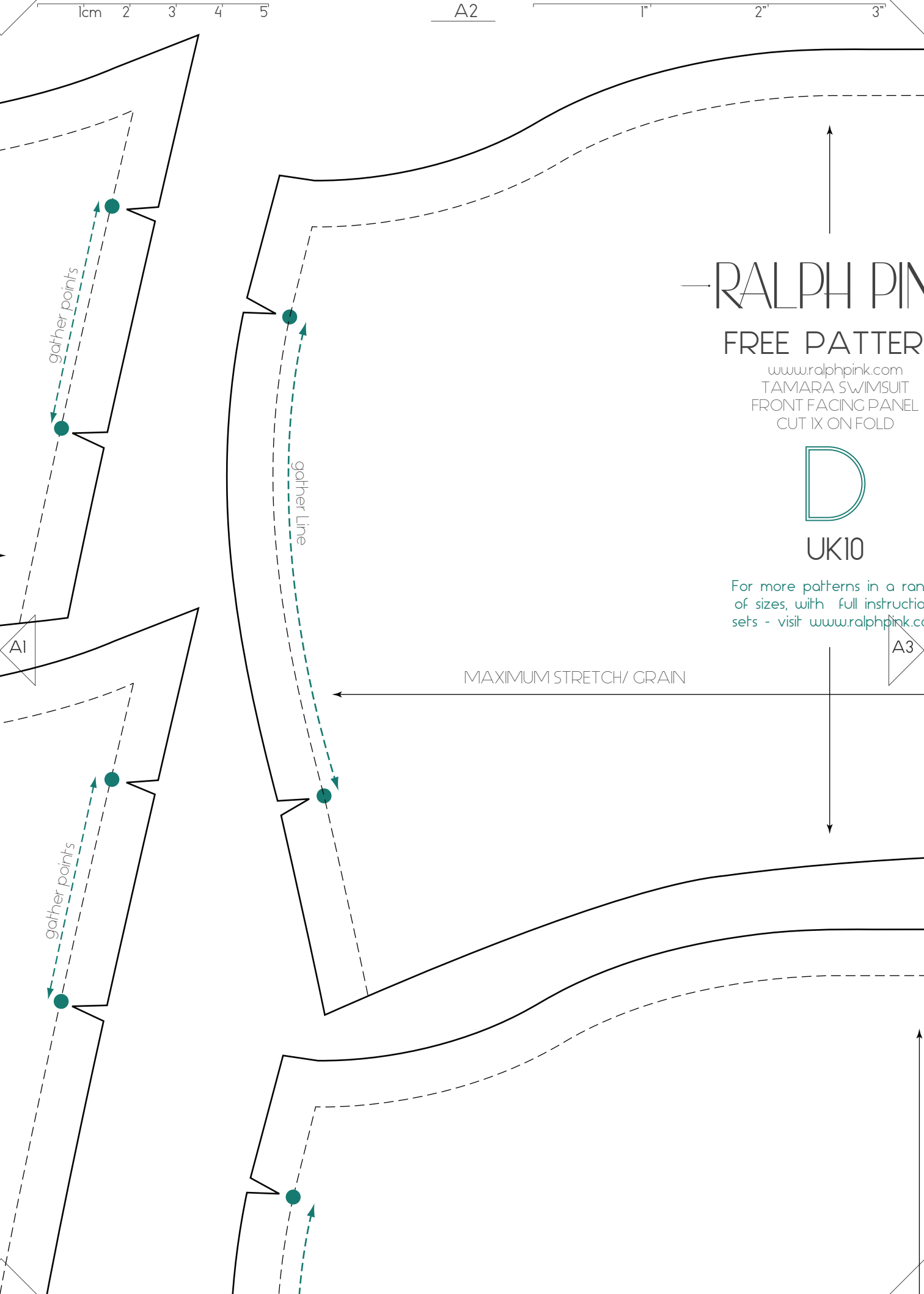
FREE PATTERN

www.ralphpink.com
TAMARA SWIMSUIT
BACK FACING PANEL
CUT 1X PAIR

UK10

MAXIMUM STRETCH/ GRAIN

A2



1cm 2 3 4 5

A2

1"

2"

3"

RALPH PINK

FREE PATTERN

www.ralphpink.com
TAMARA SWIMSUIT
FRONT FACING PANEL
CUT 1X ON FOLD



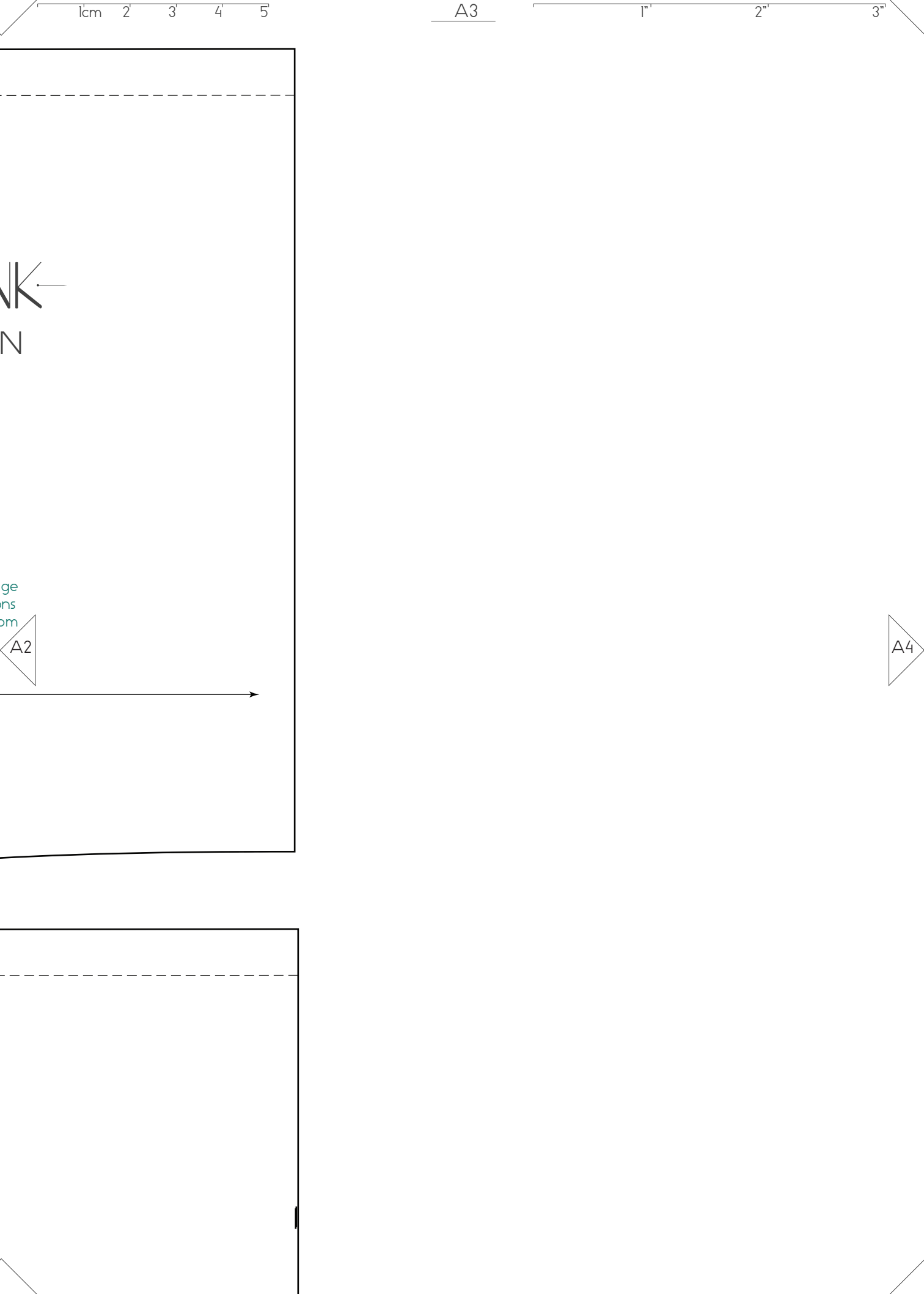
UK10

For more patterns in a range
of sizes, with full instructions
sets - visit www.ralphpink.com

A3

MAXIMUM STRETCH/ GRAIN

A1



1cm 2 3 4 5 B1 1" 2" 3"

RALPH PINK

FREE PATTERN

www.ralphpink.com
TAMARA SWIMSUIT
BACK PANEL
CUT 1X PAIR

B

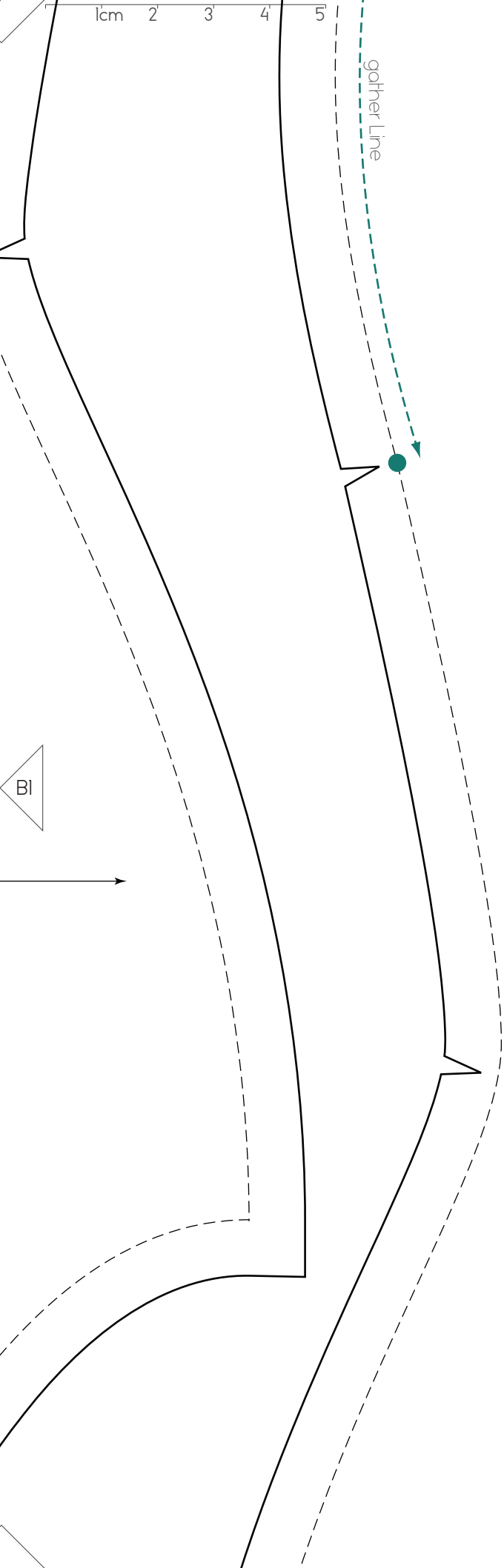
UK10

For more patterns in a range
of sizes, with full instructions
sets - visit www.ralphpink.com

MAXIMUM STRETCH/ GRAIN

B2

ER BACK



B2

RALPH

FREE PA

www.ralp
TAMARA
FRONT
CUT IX C



UK

For more patte
of sizes, with
sets - visit ww

B3

1cm 2 3 4 5

B3

1"

2"

3"

ALPHAPINK

PATTERN

alphapink.com
SWIMSUIT
PANEL
ON FOLD



K10

Patterns in a range
Full instructions
www.alphapink.com



RALPH PINK

FREE PATTERN

www.ralphpink.com
TAMARA SWIMSUIT
CROTCH FACING/LINING
CUT X1

UK10

For more patterns in a range
of sizes, with full instructions
sets - visit www.ralphpink.com

CENTRE FRONT / BACK

C2

Cl

CENTRE

1cm

3

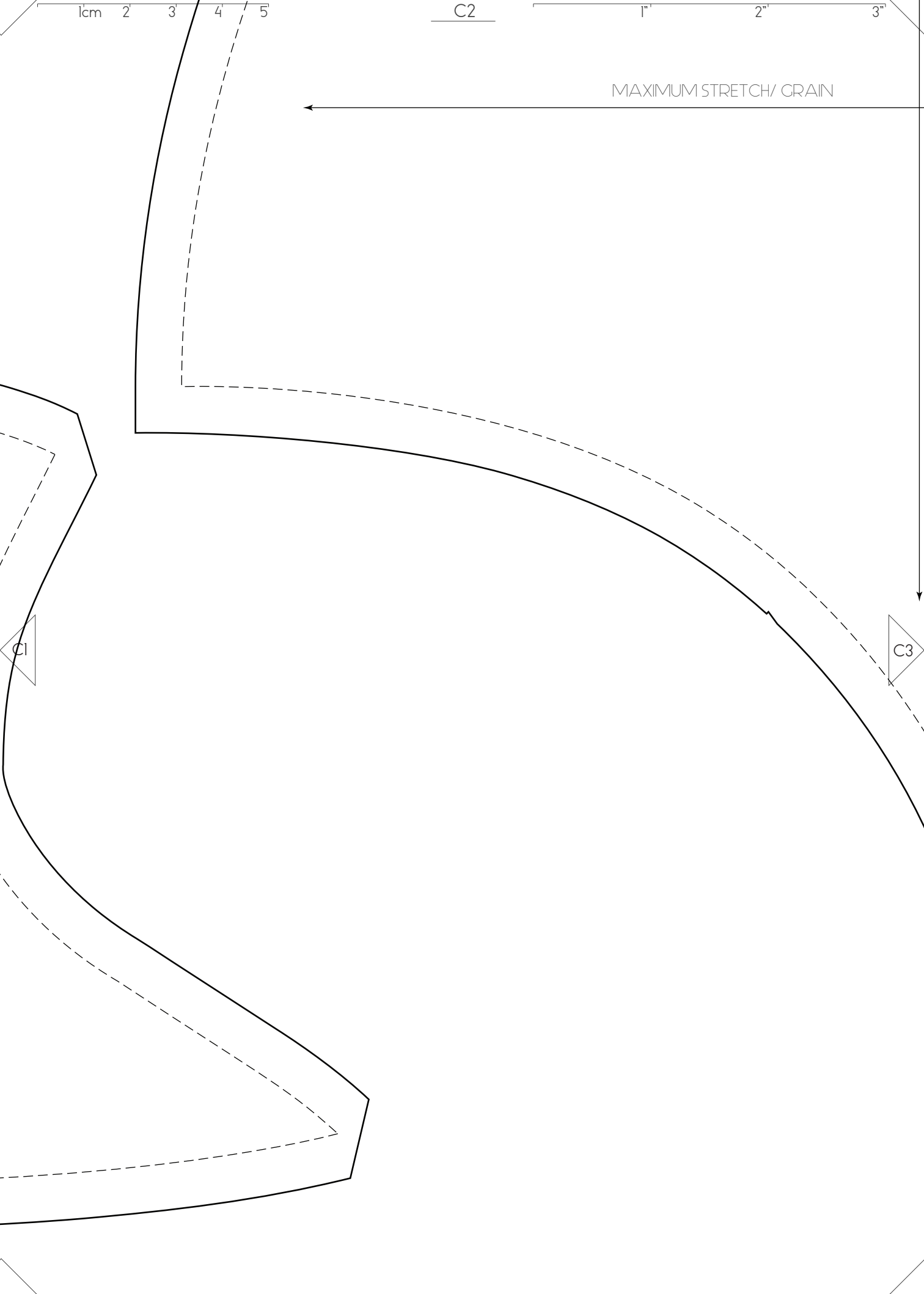
4

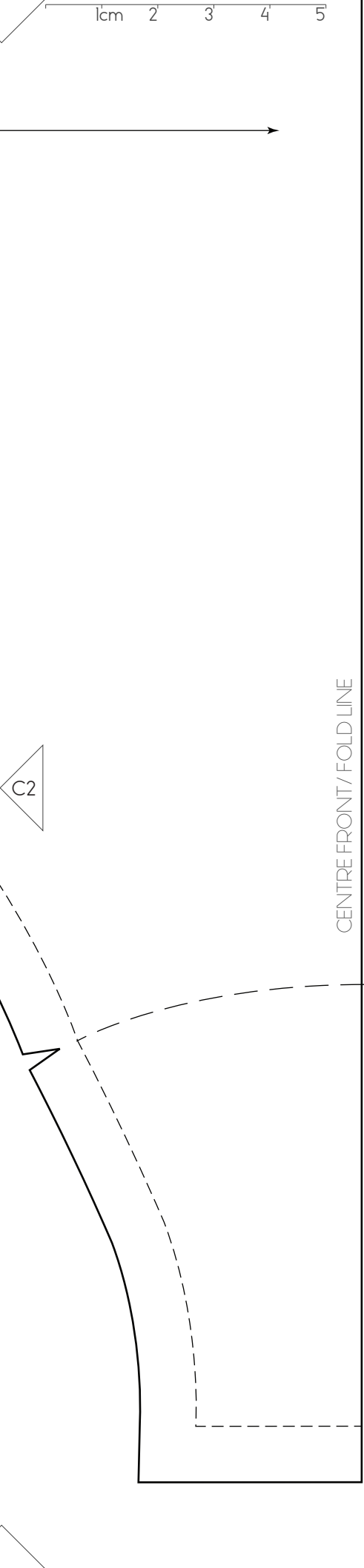
5

1"

2"

3"





C3



C4