

Centre Back

FREE PATTERN

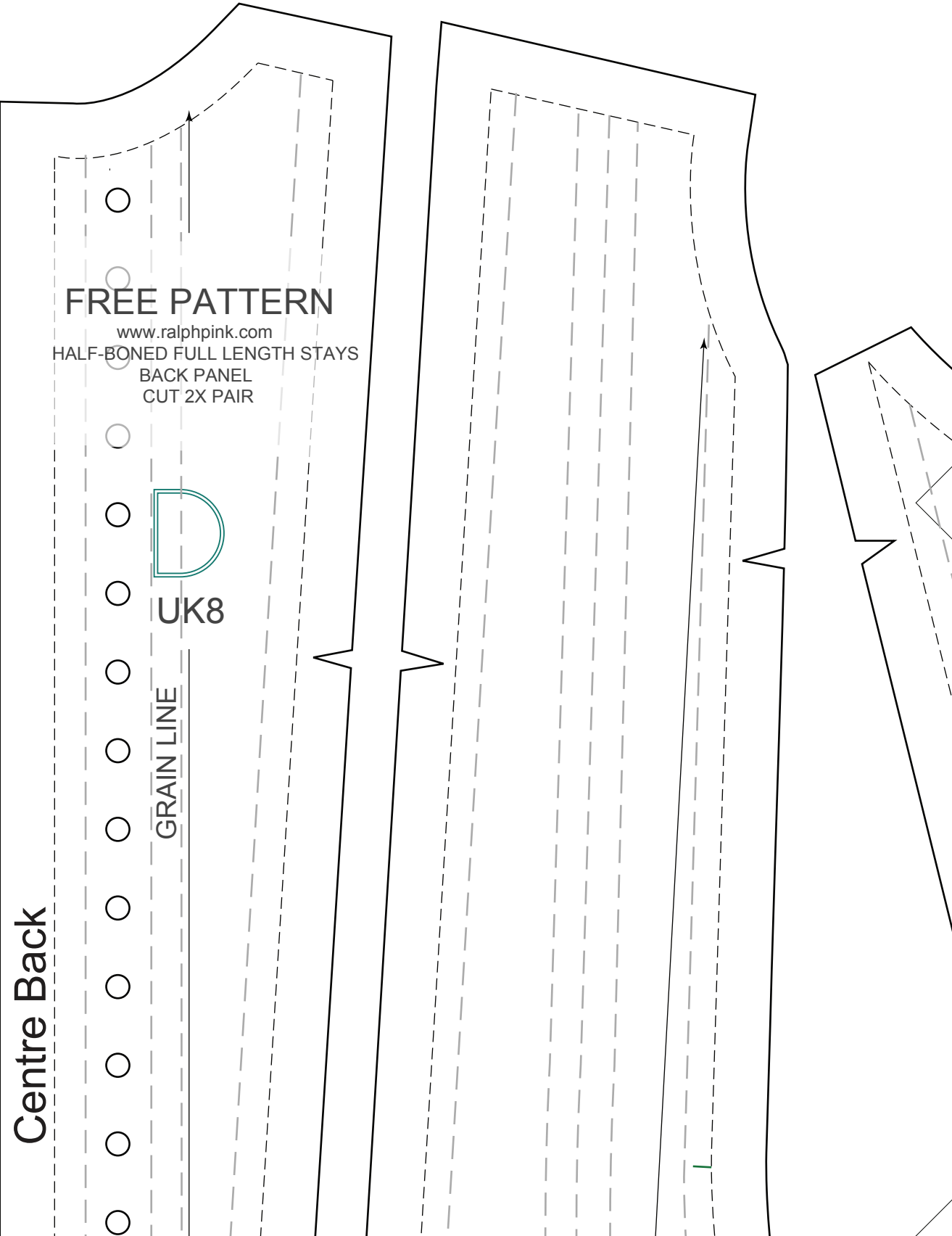
[www.ralphpink.com](http://www.ralphpink.com)

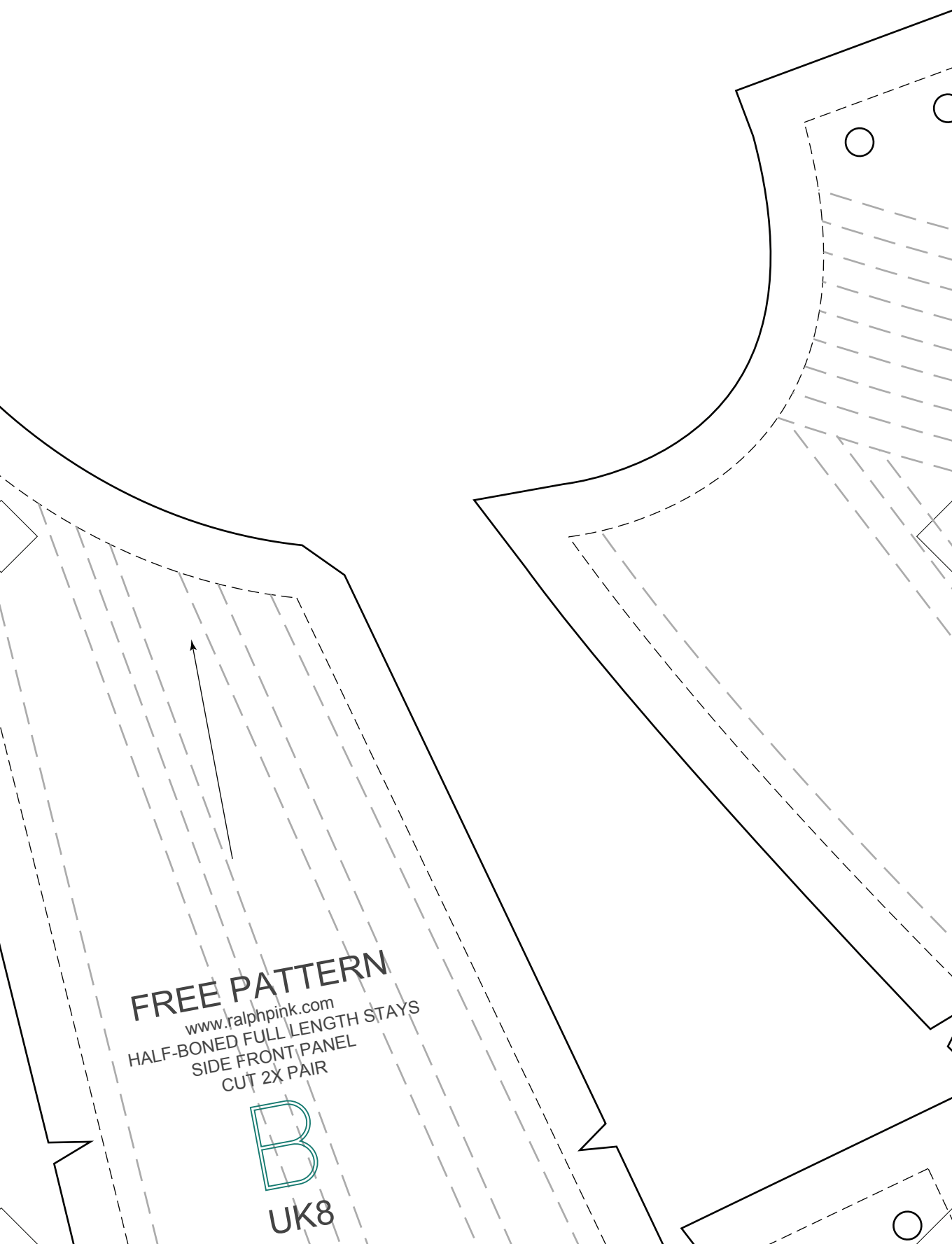
HALF-BONED FULL LENGTH STAYS  
BACK PANEL  
CUT 2X PAIR



UK8

GRAIN LINE



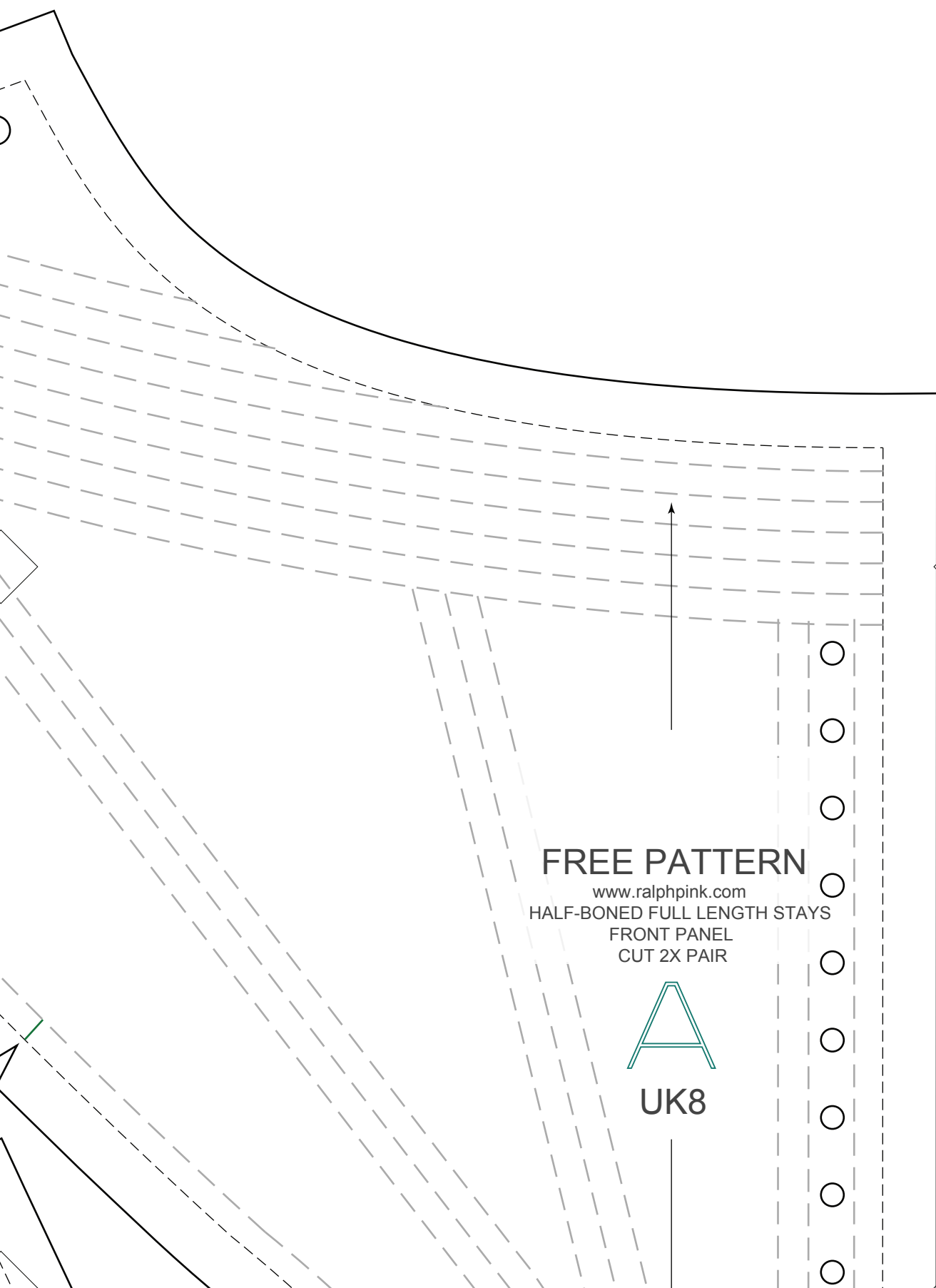


**FREE PATTERN**  
[www.ralphpink.com](http://www.ralphpink.com)  
HALF-BONED FULL LENGTH STAYS  
SIDE FRONT PANEL  
CUT 2X PAIR

**B**  
**UK8**



A-3



## FREE PATTERN

[www.ralphpink.com](http://www.ralphpink.com)

HALF-BONED FULL LENGTH STAYS

FRONT PANEL

CUT 2X PAIR



UK8

0cm 1cm 2cm 3cm 4cm 5cm

B-1

10 20 30 40 50 60 70 1in 2in 3in



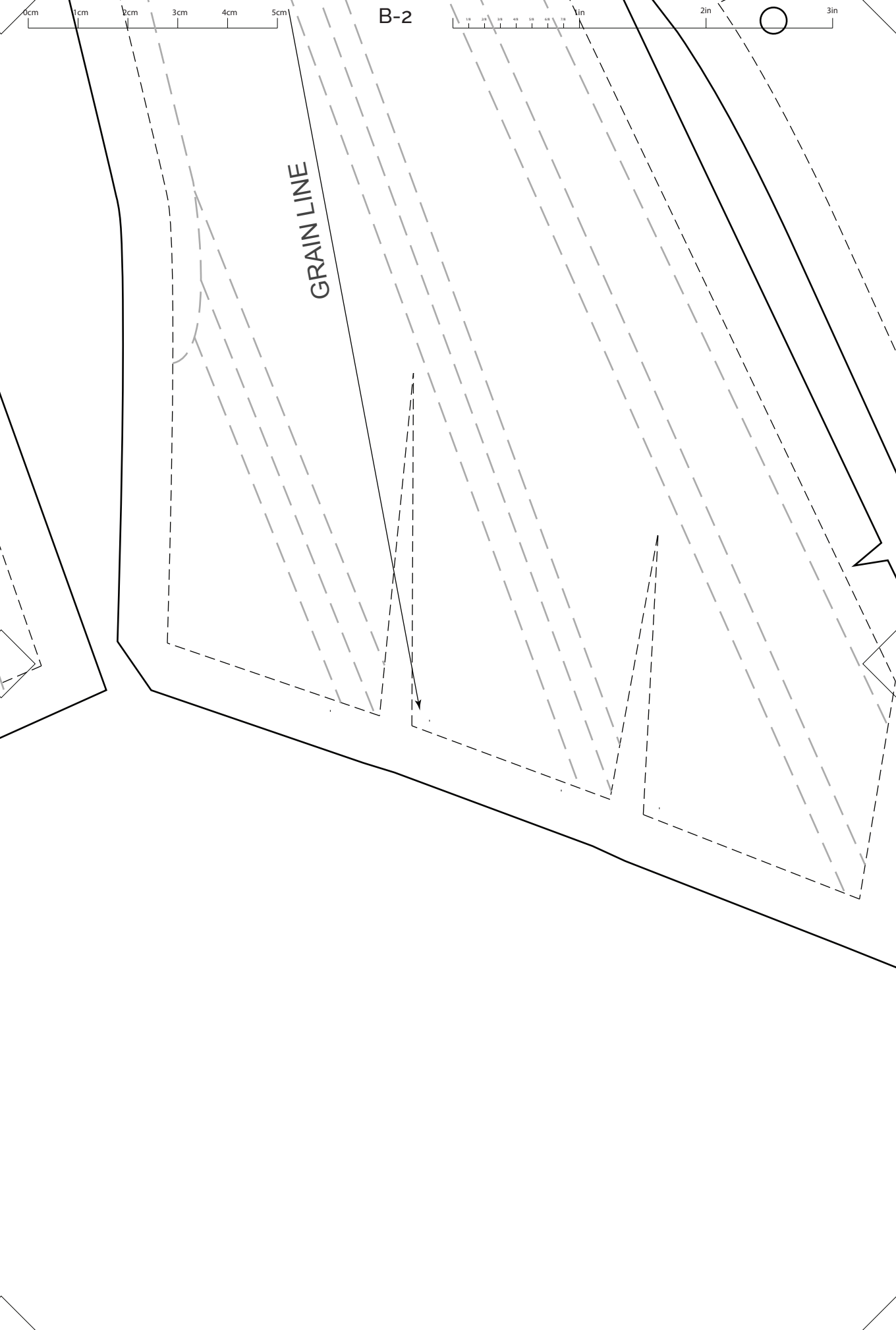
GRAIN LINE

**FREE PATTERN**  
[www.ralphpink.com](http://www.ralphpink.com)  
HALF-BONED FULL LENGTH STAYS  
SIDE BACK PANEL  
CUT 2X PAIR



UK8





B-2

GRAIN LINE

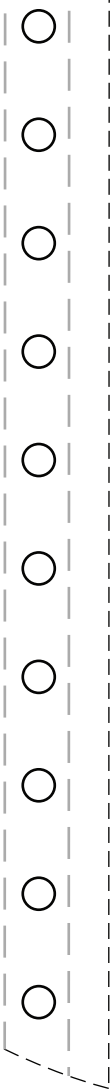
0cm 1cm 2cm 3cm 4cm 5cm

B-3

1.5 2 2.5 3 3.5 4 4.5 5 1in

2in 3in

GRAIN LINE



www.ralprpink.com  
HALF-BONED FULL LENGTH STAYS  
SIDE FRONT PANEL  
CUT 2X PAIR  
**FREE PATTERN**

