

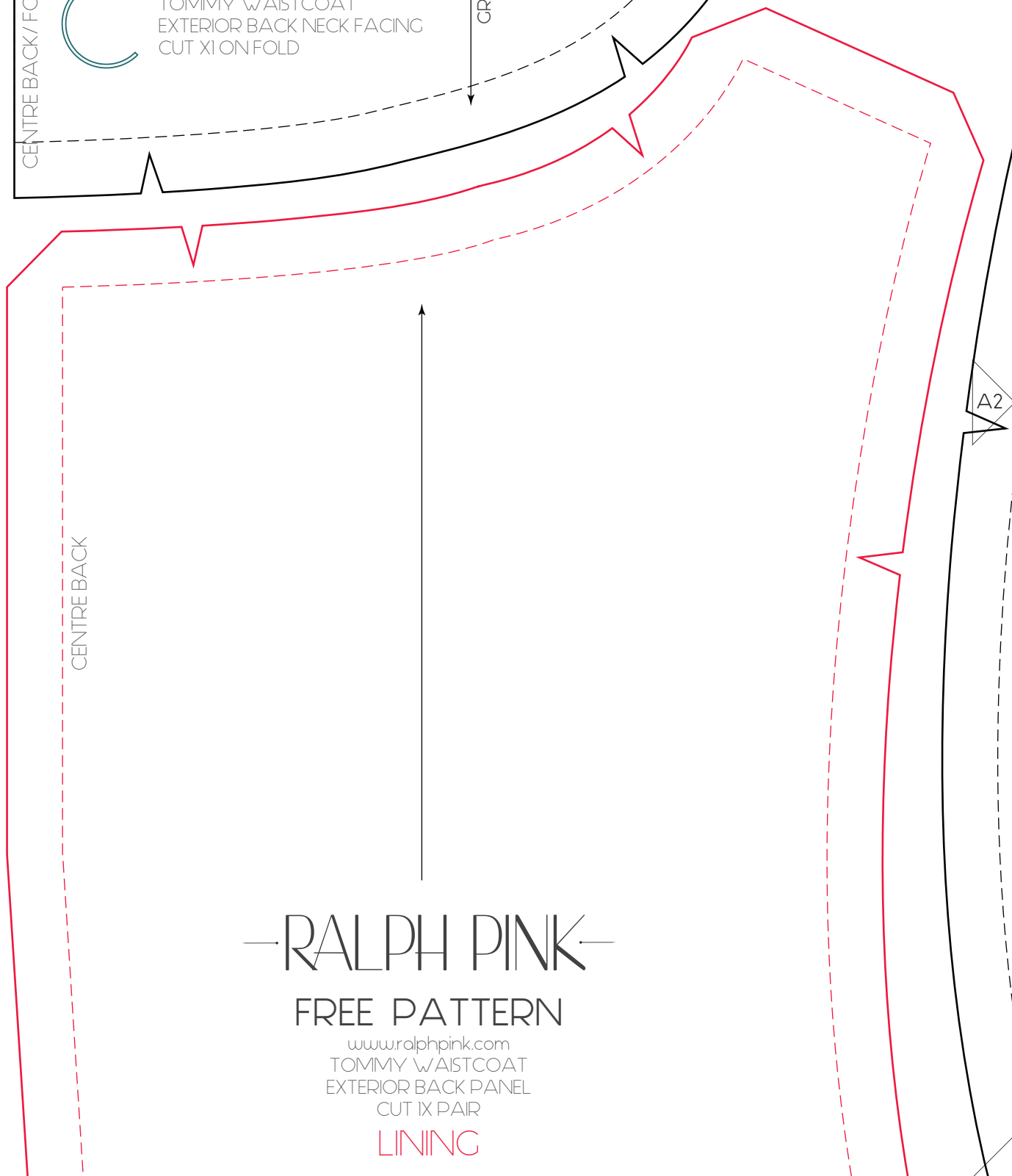
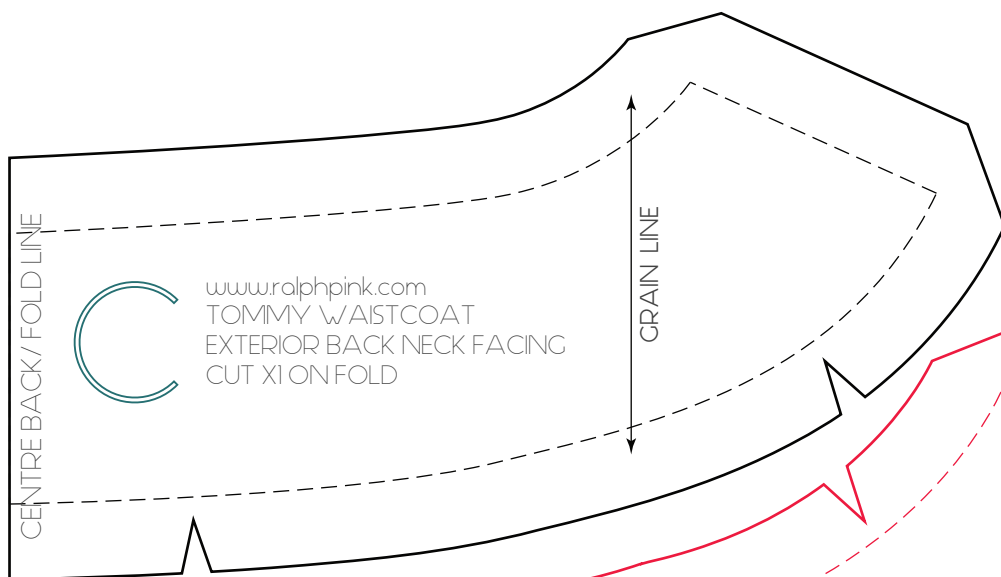
1cm 2 3 4 5

A1

1"

2"

3"



—RALPH PINK—

FREE PATTERN

www.ralphpink.com  
TOMMY WAISTCOAT  
EXTERIOR BACK PANEL  
CUT 1X PAIR

LINING

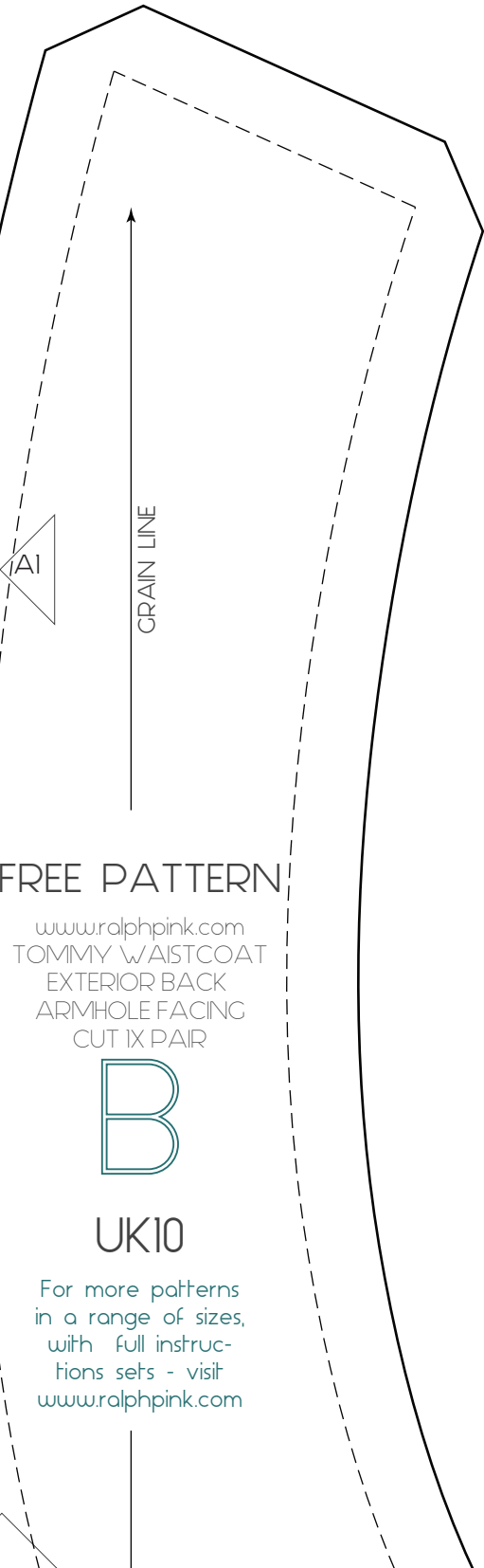
1cm 2 3 4 5

A2

1"

2"

3"



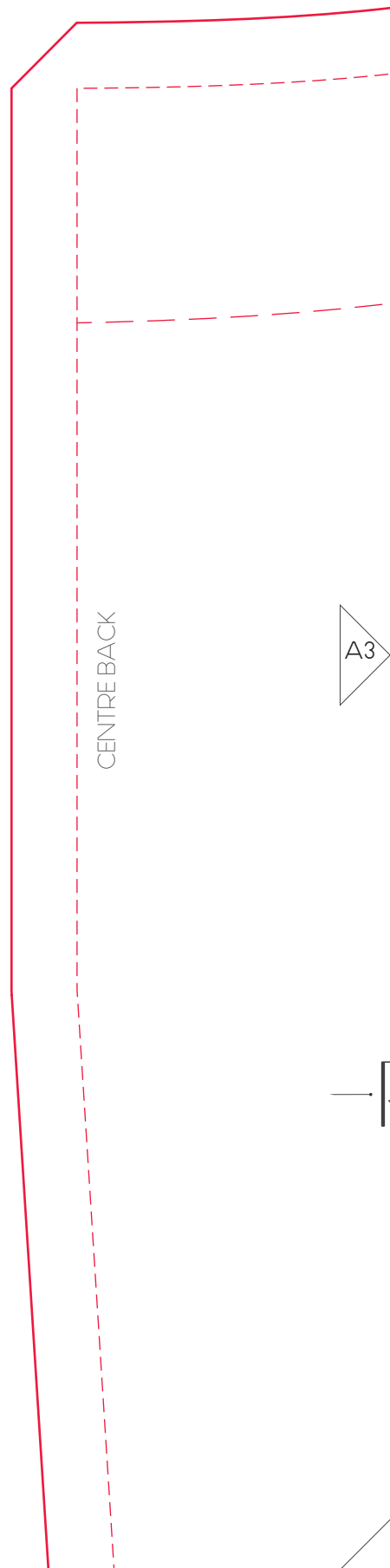
## FREE PATTERN

[www.ralphpink.com](http://www.ralphpink.com)  
TOMMY WAISTCOAT  
EXTERIOR BACK  
ARMHOLE FACING  
CUT 1X PAIR

B

UK10

For more patterns  
in a range of sizes,  
with full instruc-  
tions sets - visit  
[www.ralphpink.com](http://www.ralphpink.com)



A3



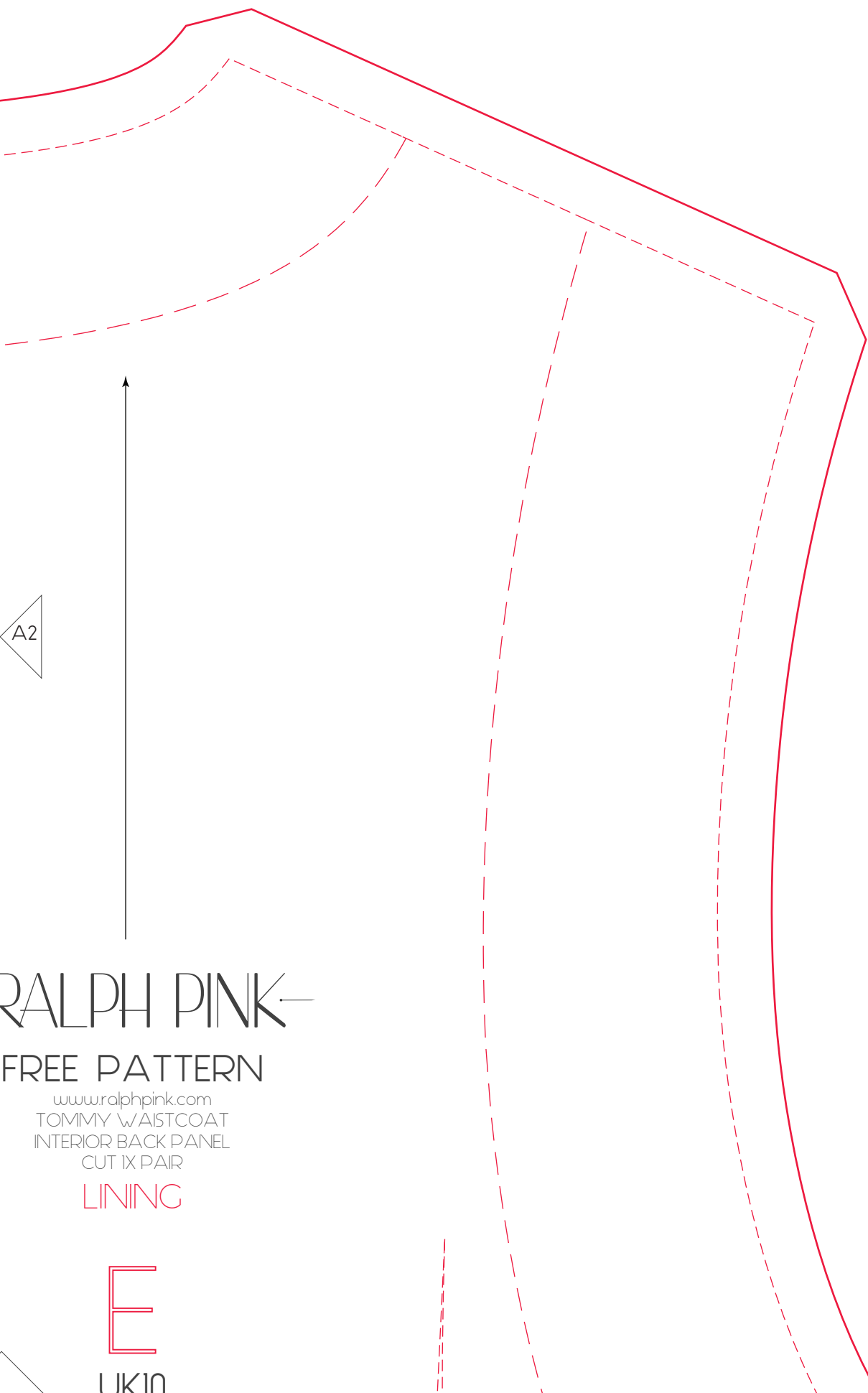
1cm 2 3 4 5

A3

1"

2"

3"



A2

RALPH PINK

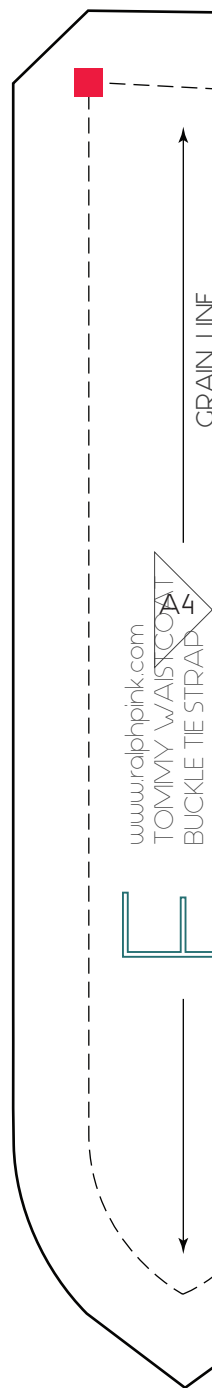
FREE PATTERN

[www.ralphpink.com](http://www.ralphpink.com)  
TOMMY WAISTCOAT  
INTERIOR BACK PANEL  
CUT 1X PAIR

LINING



UK10



[www.ralphpink.com](http://www.ralphpink.com)

TOMMY WAISTCOAT  
BUCKLE TIE STRAP



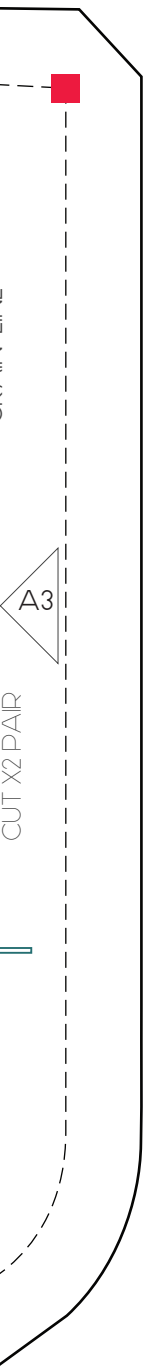
1cm 2 3 4 5

A4

1"

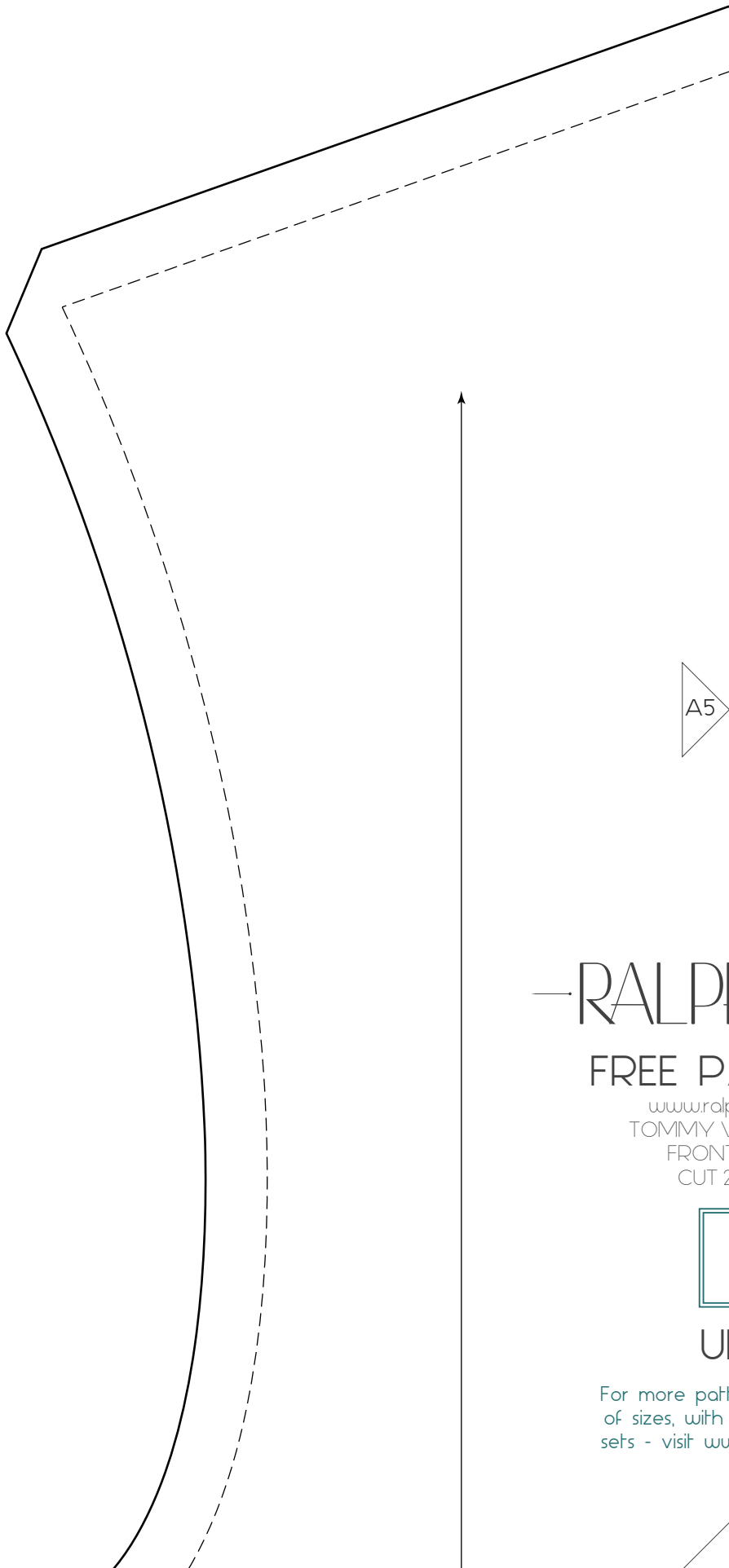
2"

3"



A3

CUT X2 PAIR



A5

RALPH

FREE P

www.ralp  
TOMMY V  
FRONT  
CUT 2



U

For more patt  
of sizes, with  
sets - visit wu

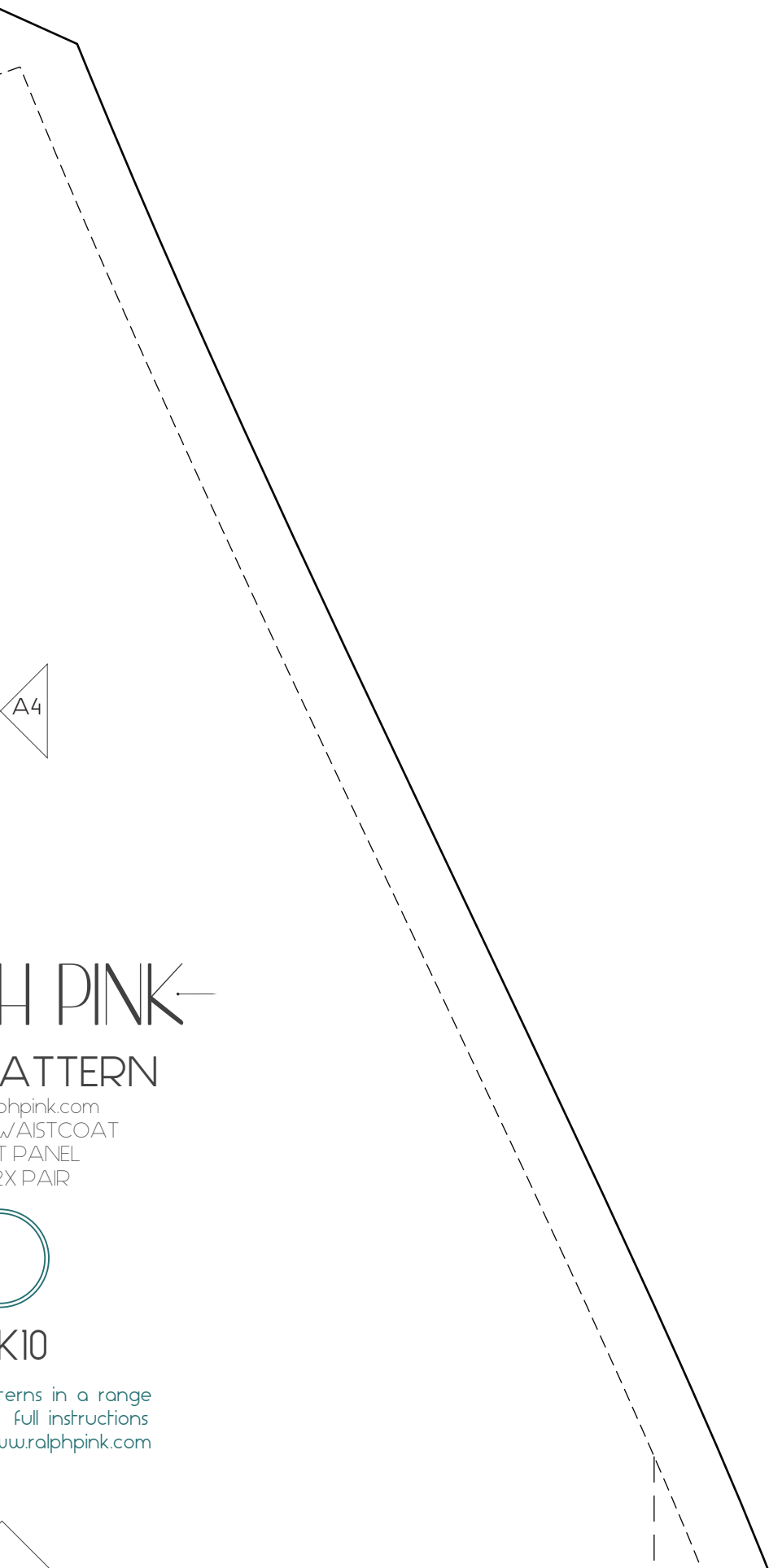
1cm 2 3 4 5

A5

1"

2"

3"



# RALPH PINK

## PATTERN

ralphpink.com  
w/ AISTCOAT  
T PANEL  
EX PAIR



K10

Patterns in a range  
Full instructions  
[www.ralphpink.com](http://www.ralphpink.com)

1cm 2 3 4 5

B1

1"

2"

3"

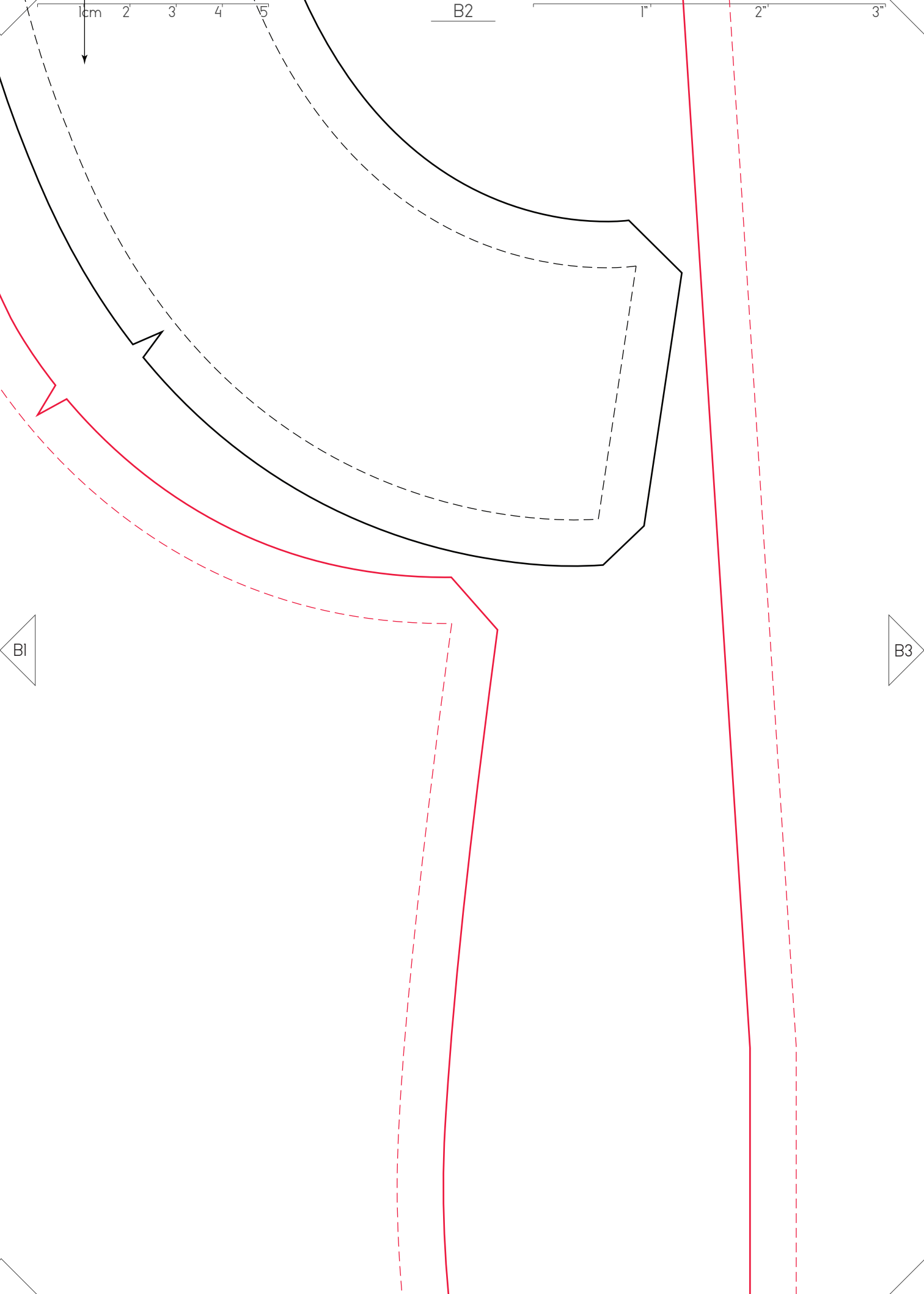


UK10

For more patterns in a range  
of sizes, with full instructions  
sets - visit [www.ralphpink.com](http://www.ralphpink.com)

GRAIN LINE

B2



1cm 2 3 4 5

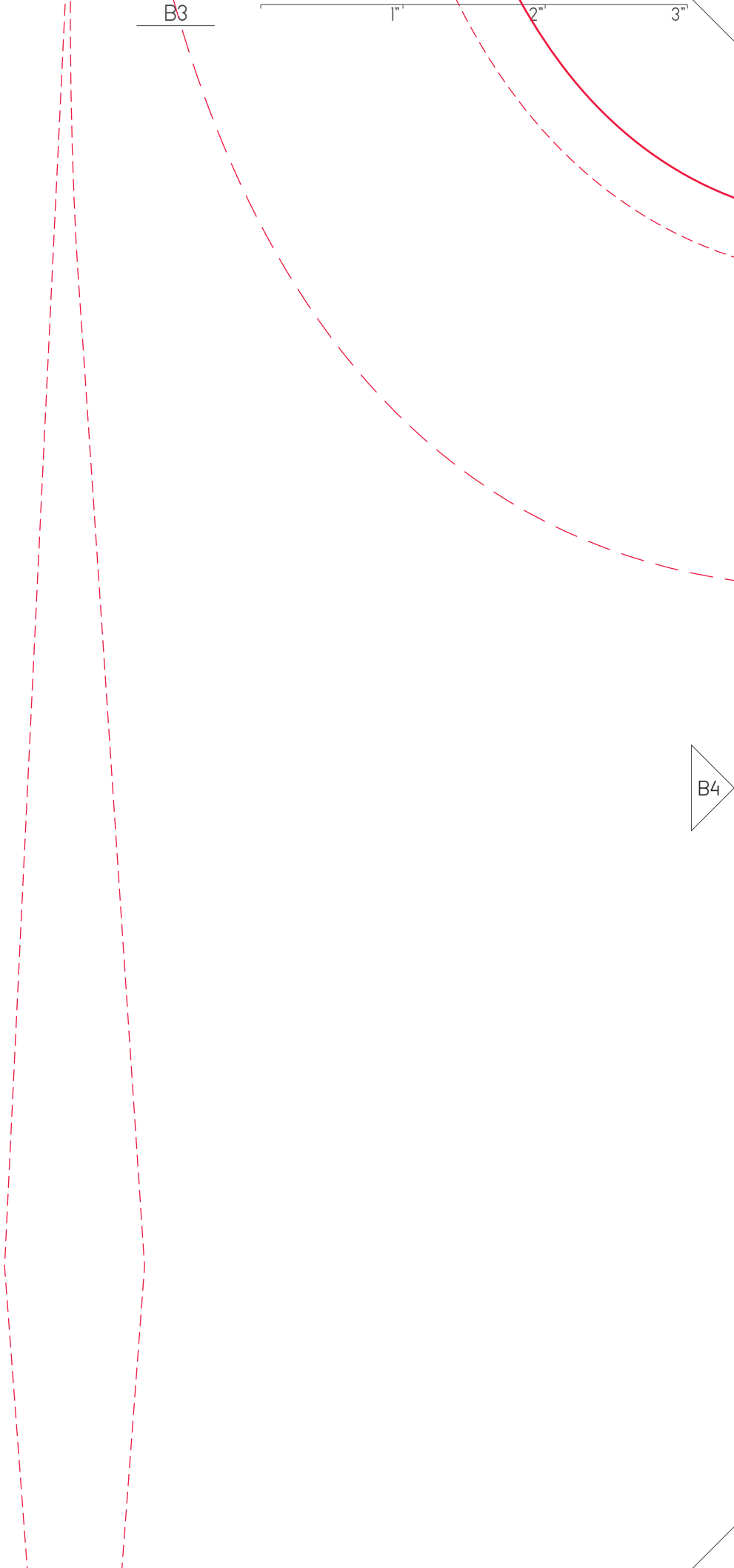
1" 2" 3"

For more patterns in a range of sizes, with full instructions sets - visit [www.ralphpink.com](http://www.ralphpink.com)

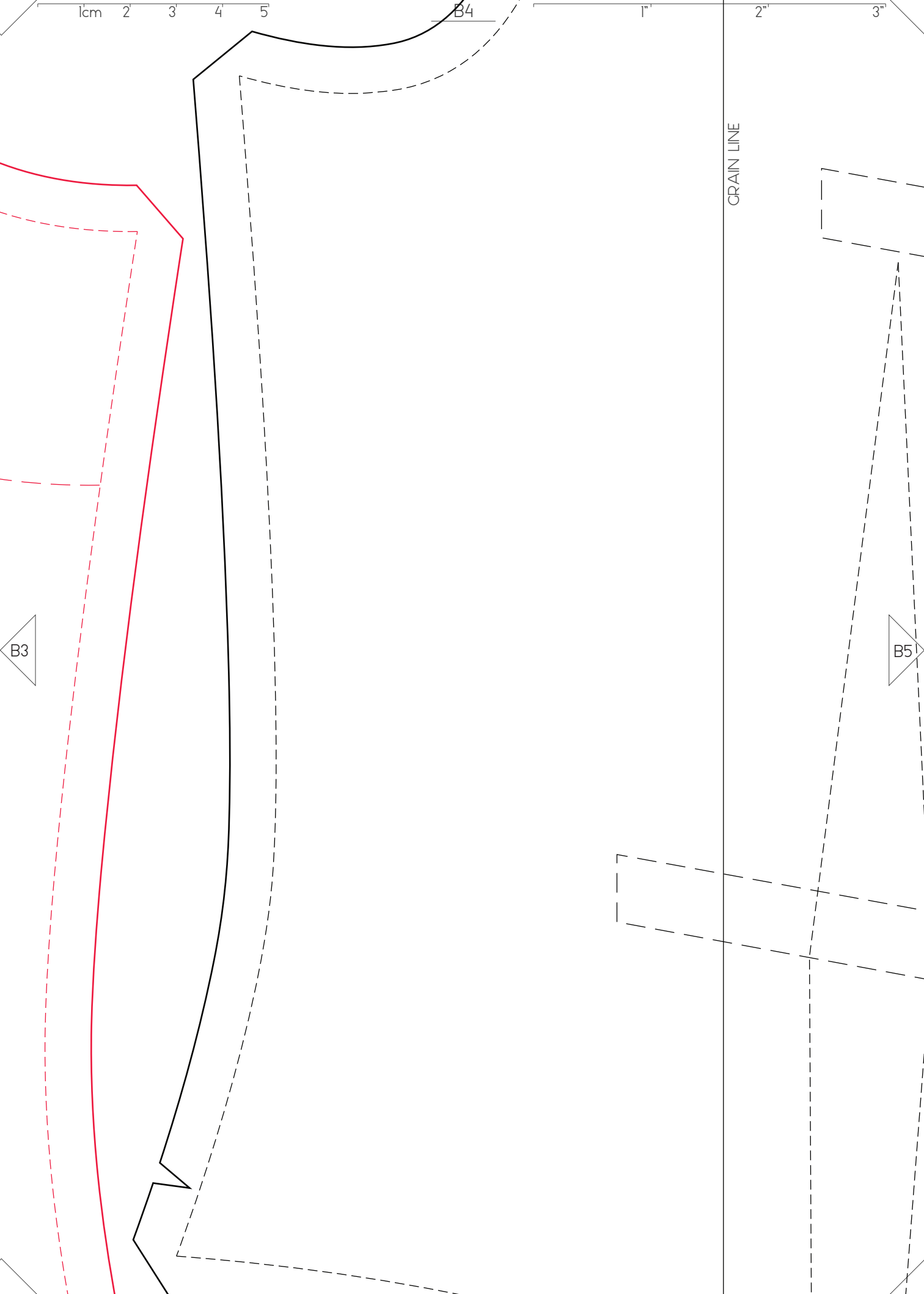
GRAIN LINE



B3

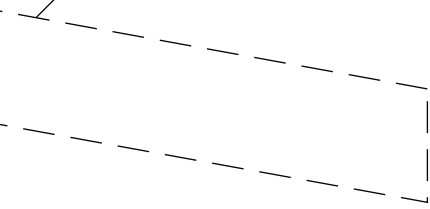






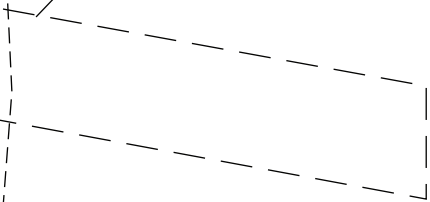
1cm 2 3 4 5

GENERIC POCKET PLACEMENT

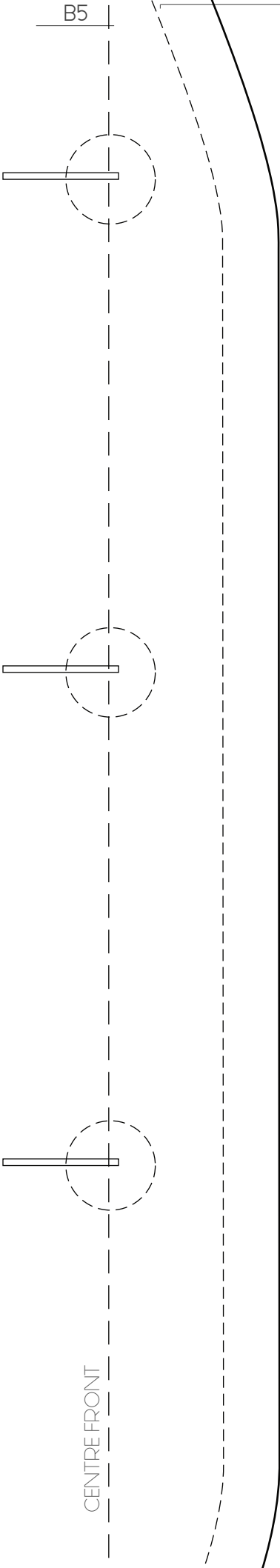


B4

GENERIC POCKET PLACEMENT



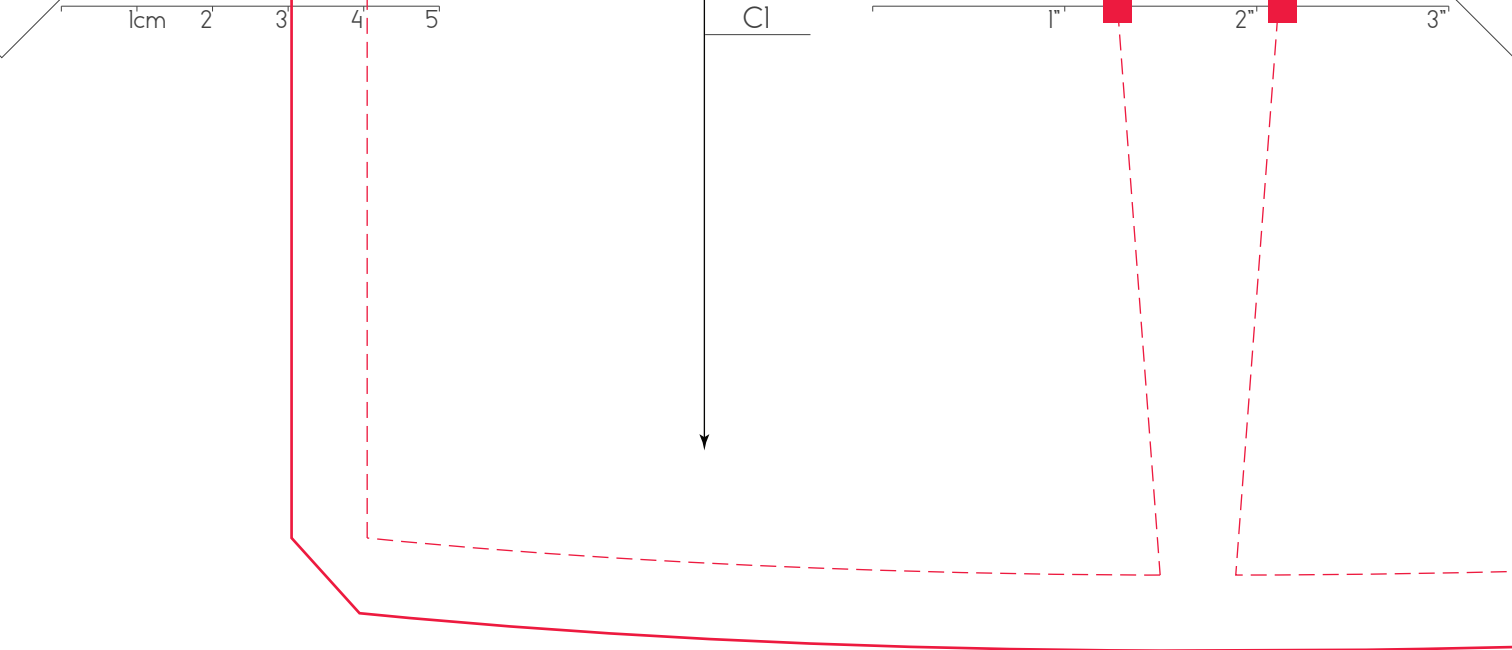
CENTRE FRONT



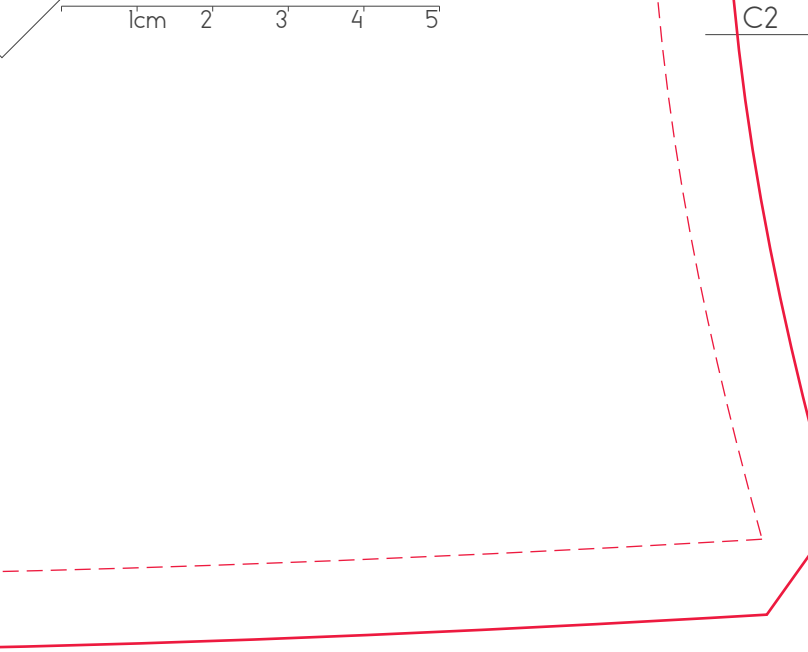
B5

1" 2" 3"

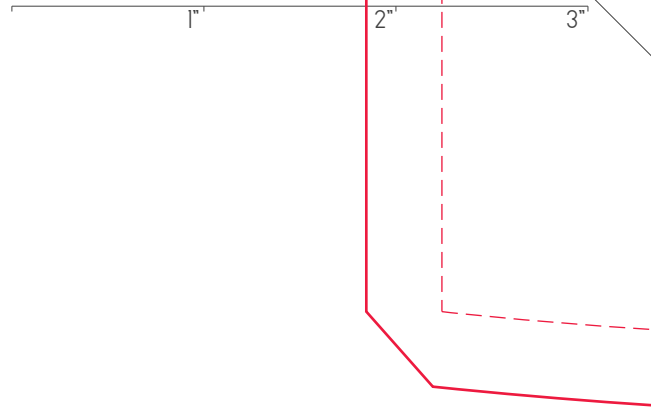
B6



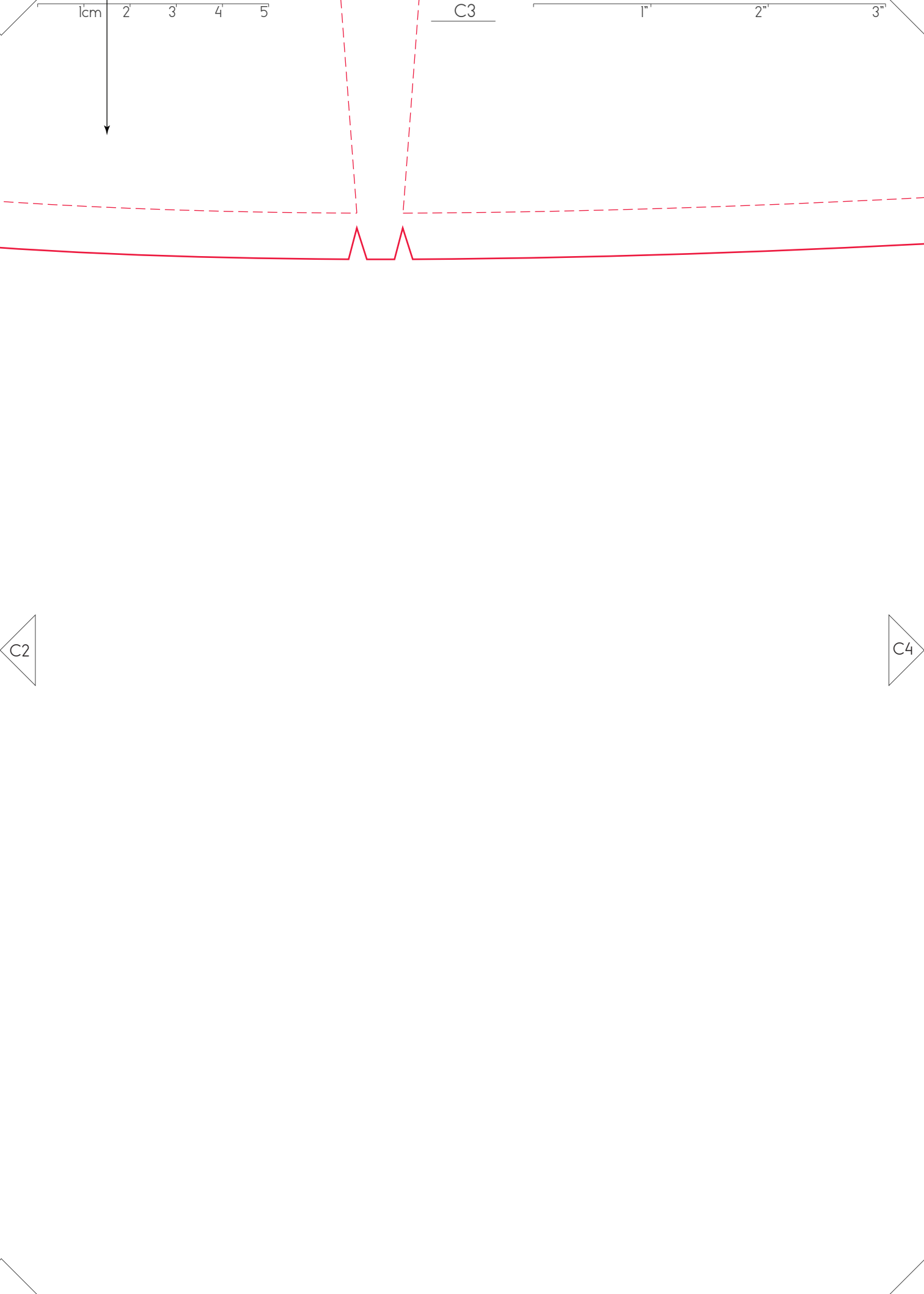
C2

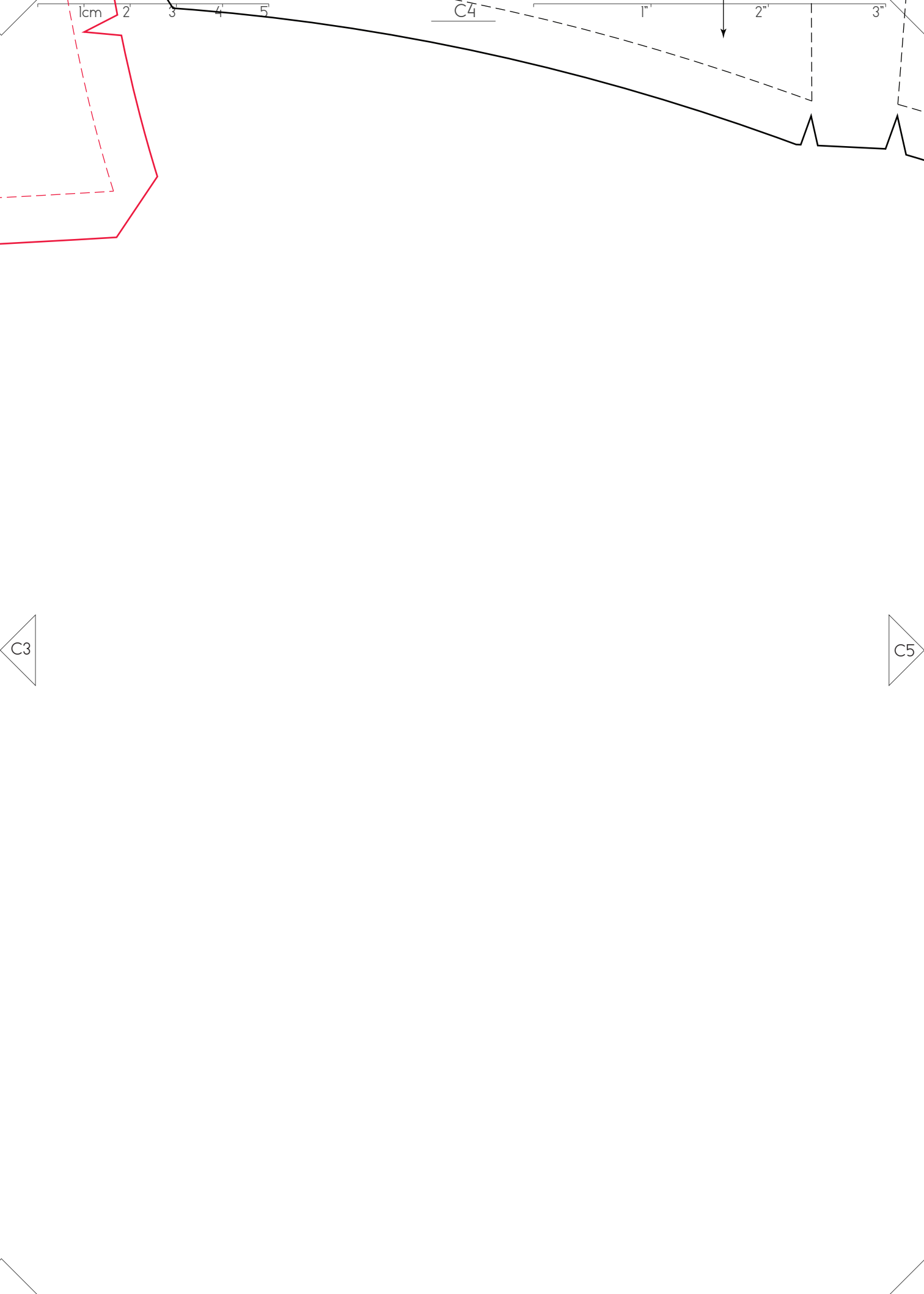


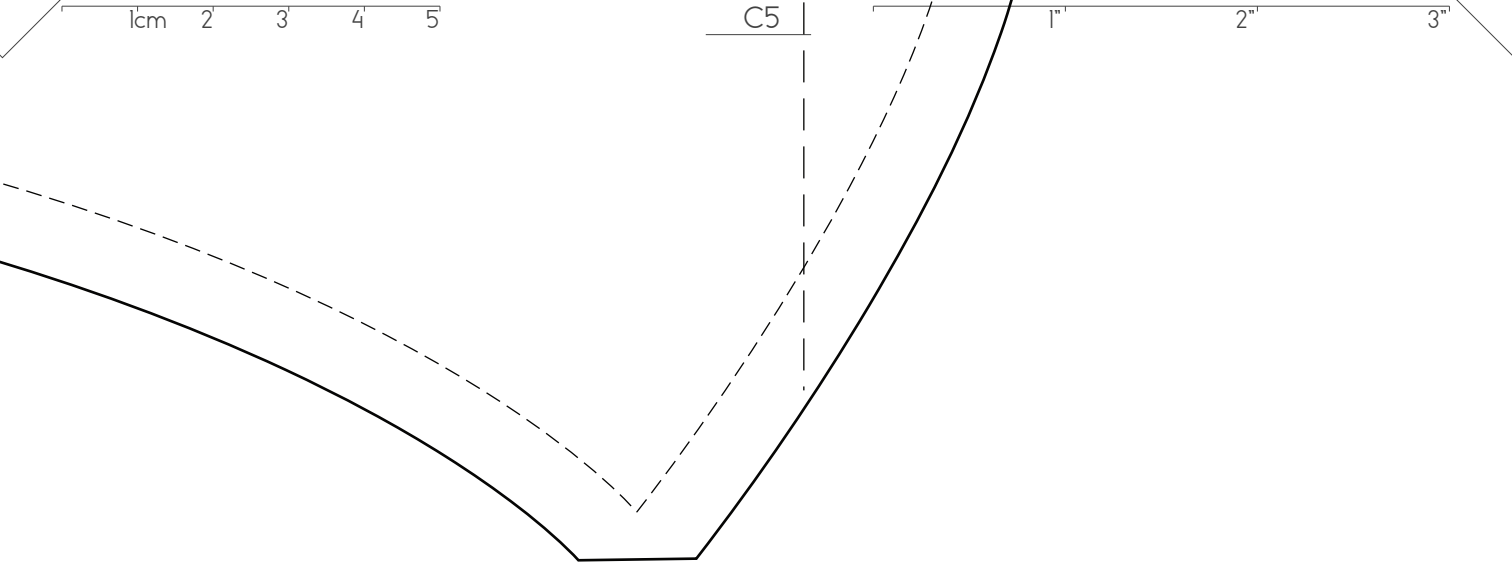
C1



C3







C4

C6