

1cm 2 3 4 5

A1

1"

2"

3"

A2

—RALPH P

FREE PATT

[www.ralphpink.com](http://www.ralphpink.com)

SATCHI KIMONO

BACK PANEL

CUT IX ON FO



M - L

SV FRONT

1cm 2 3 4 5

A2

1"

2"

3"



PINK

TERN

com

NO

LD

1cm 2 3 4 5

A3

1"

2"

3"

A2

A4

RALPH PINK

FREE PATTERN

[www.ralphpink.com](http://www.ralphpink.com)

SATCHI KIMONO

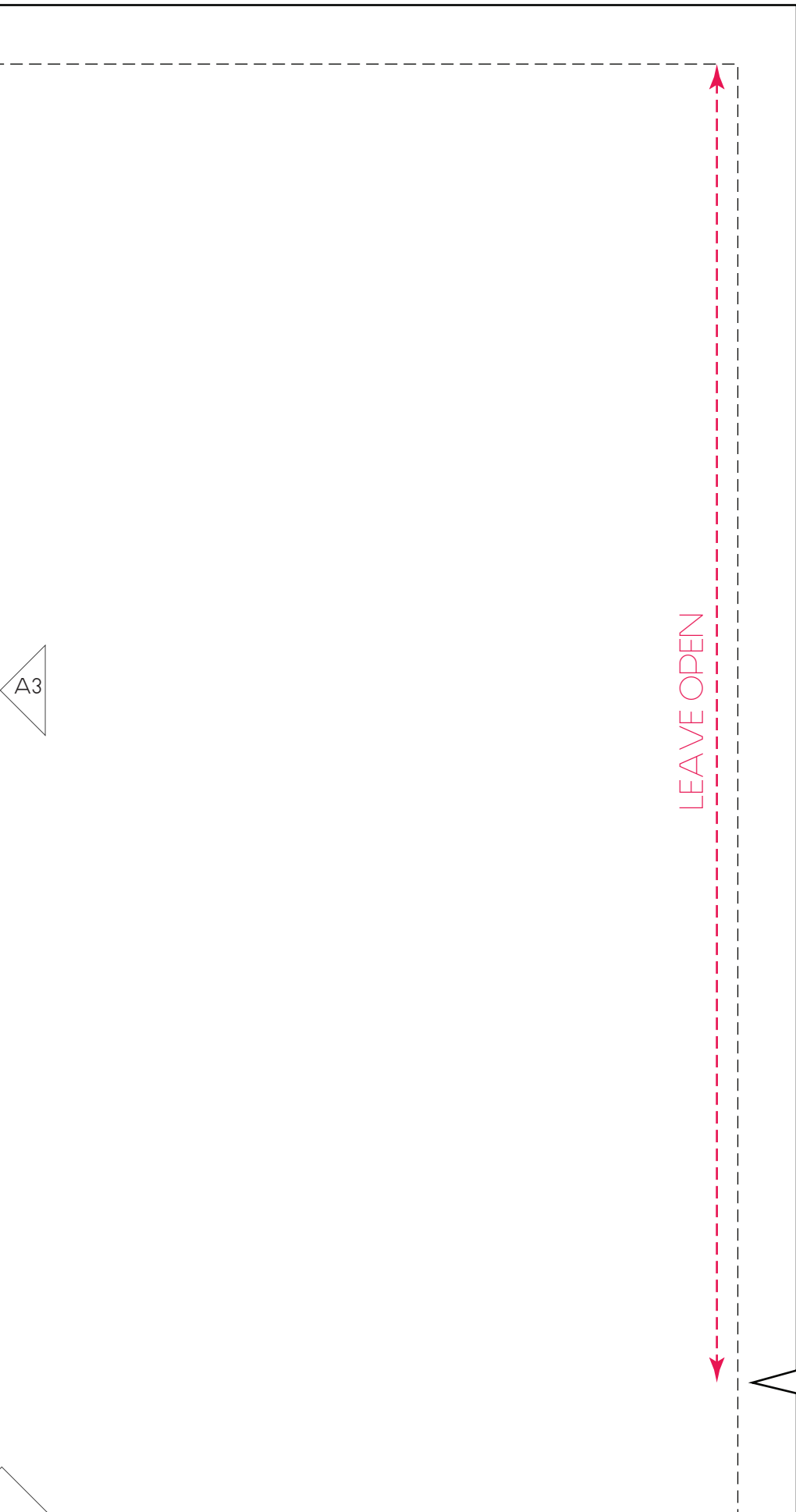
FRONT & BACK SLEEVE PANEL

CUT 2X PAIR

B

M - L

CK/ FRONT



LEAVE OPEN



1cm 2 3 4 5

A5

1"

2"

3"

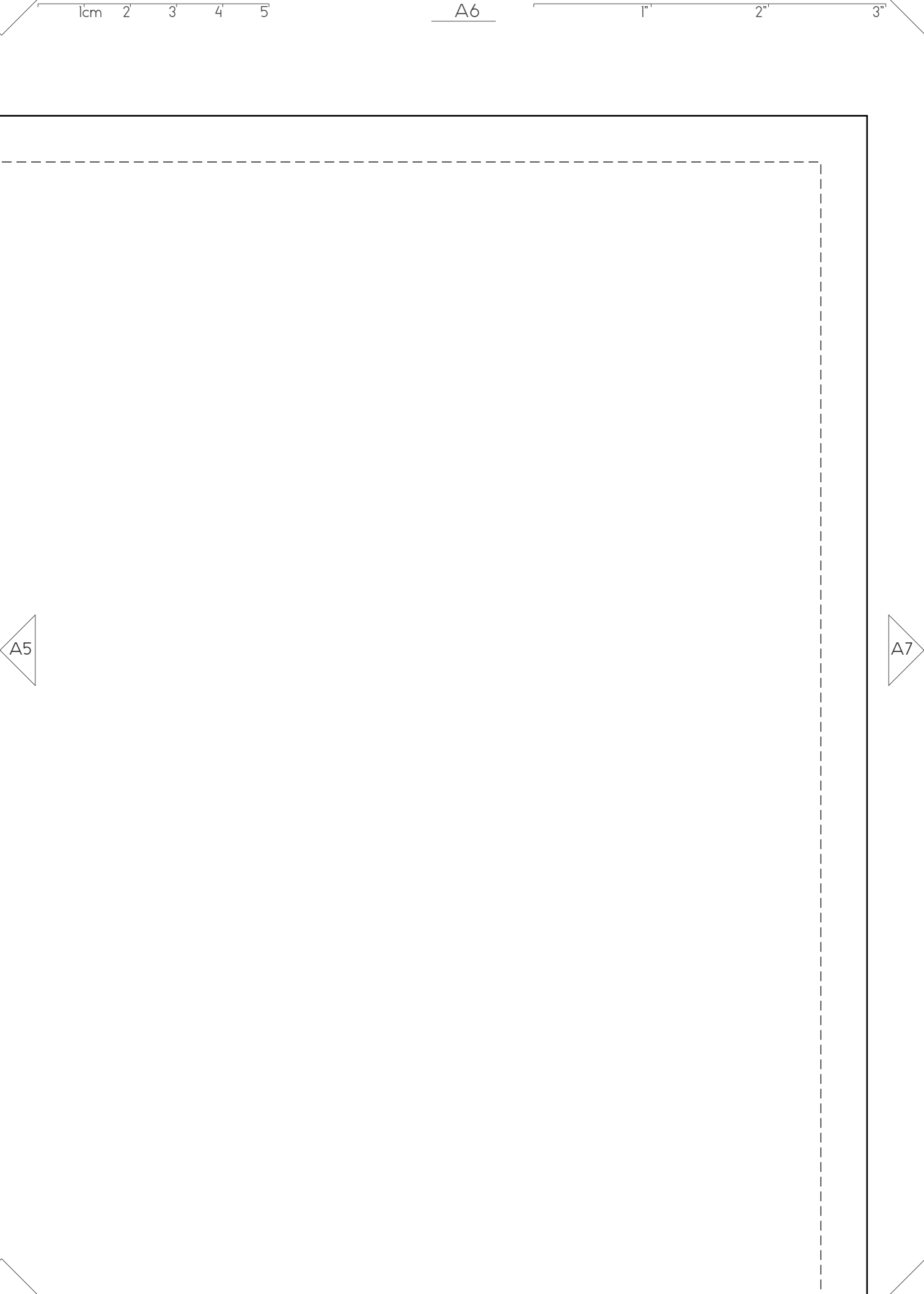
A4

A6

RALPH PINK

FREE PATTERN

[www.ralphpink.com](http://www.ralphpink.com)  
SATCHI KIMONO  
COLLAR/LAPEL PANEL  
CUT X2 PAIR



1cm 2 3 4 5

A6

1" 2" 3"



1cm 2 3 4 5

B1

1"

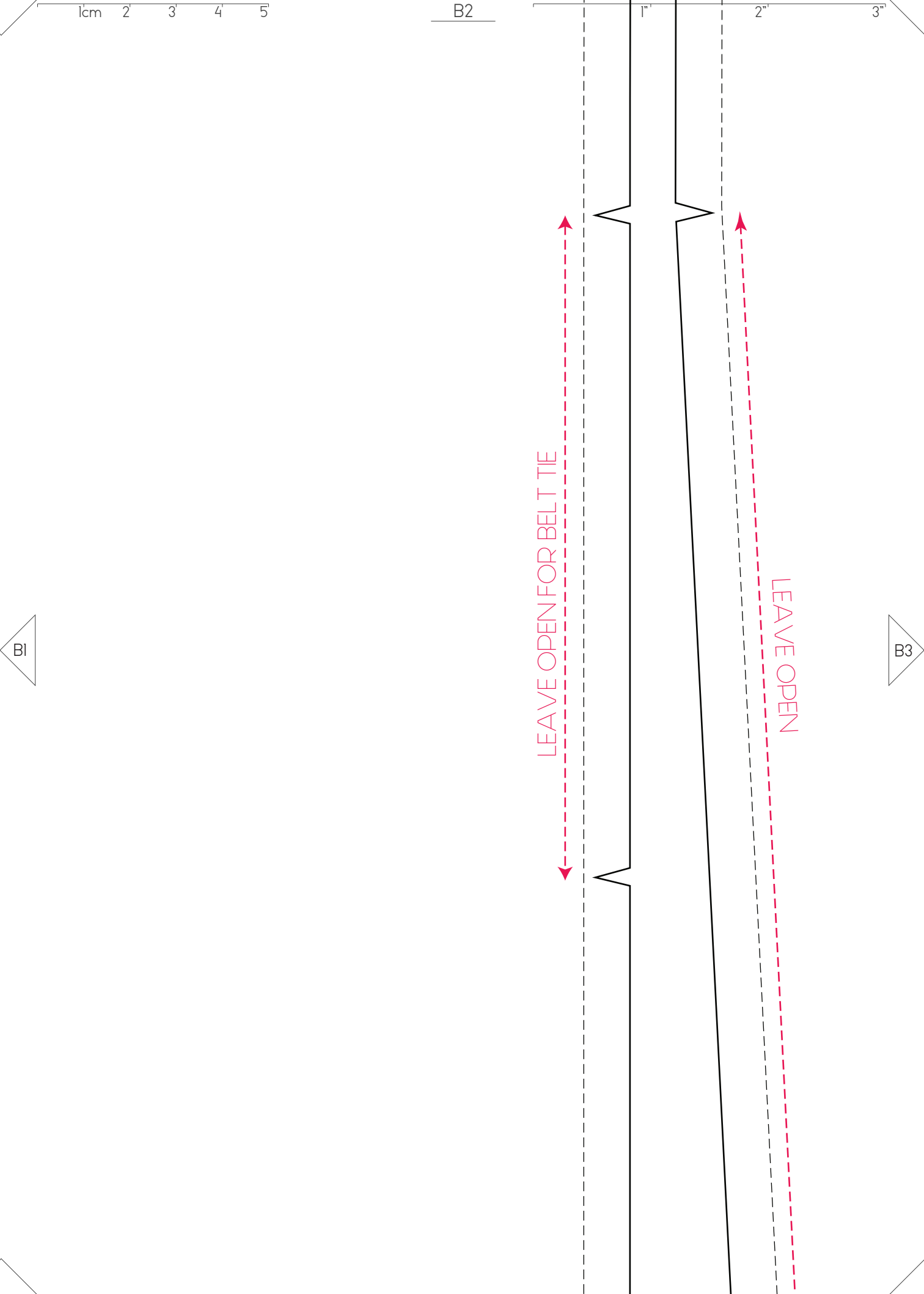
2"

3"

CENTER BACK

CENTRE BACK/ FOLD LINE

B2



1cm 2 3 4 5

B2

1"

2"

3"

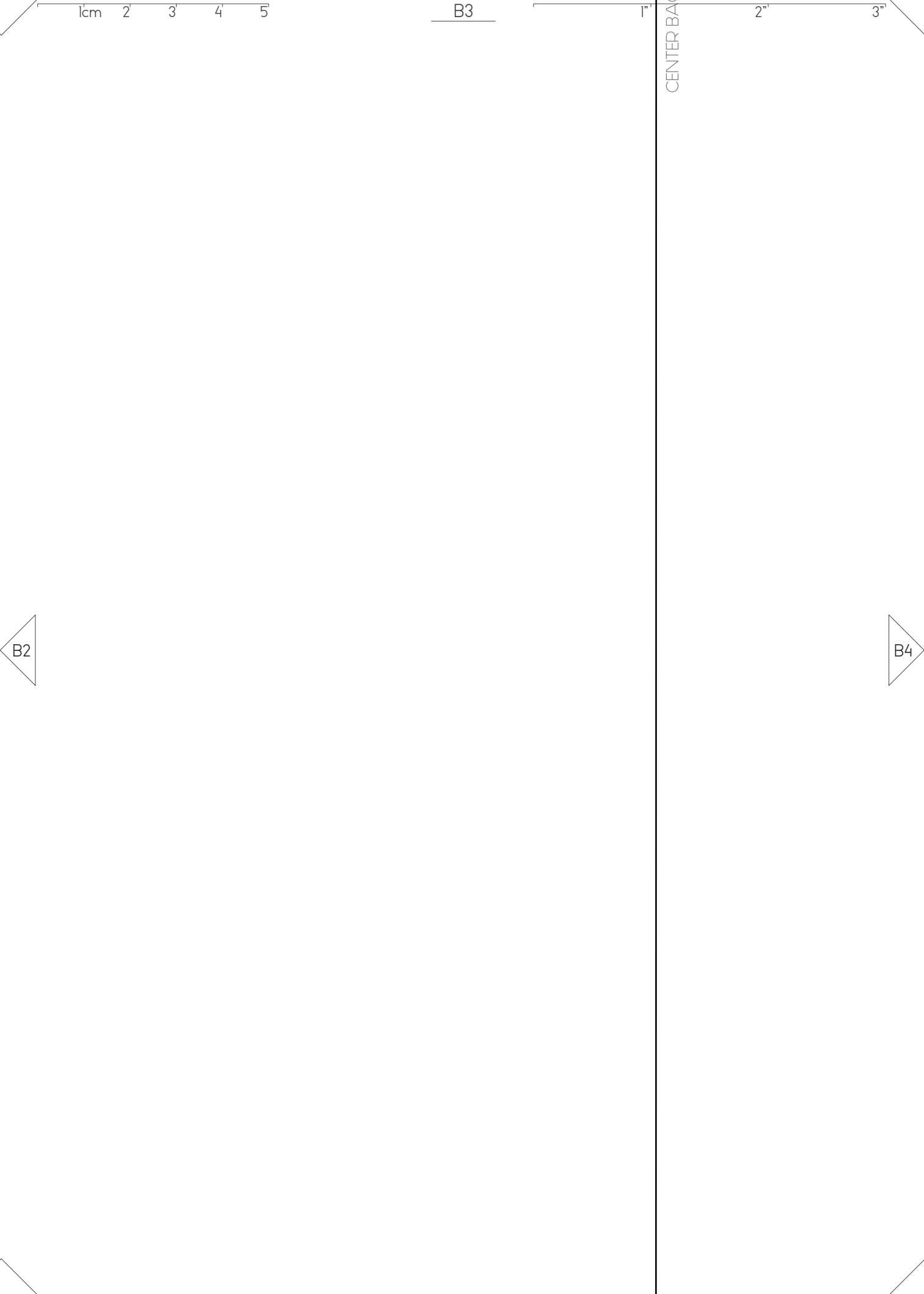
B1

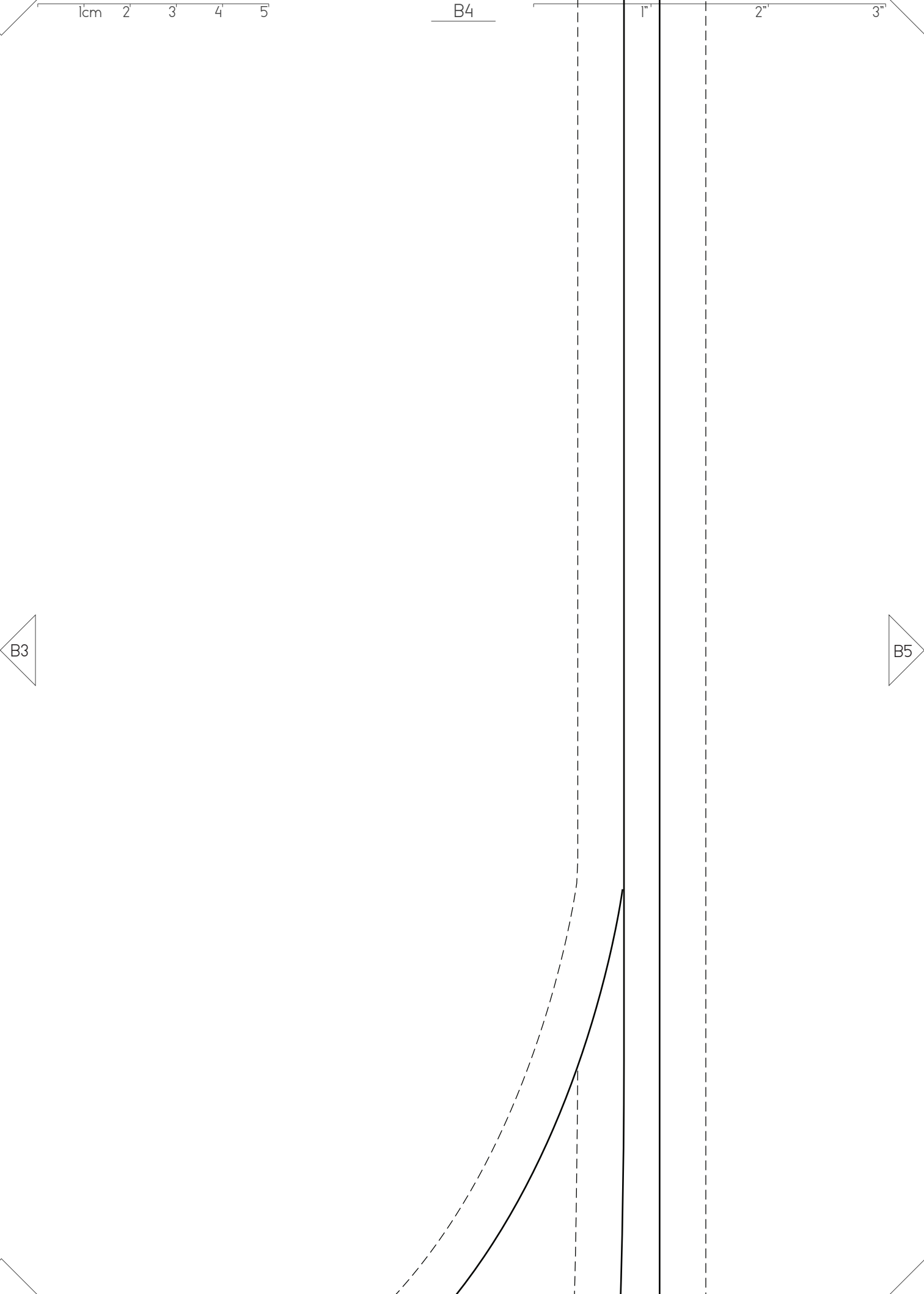
B3

LEAVE OPEN FOR BELT TIE

LEAVE OPEN





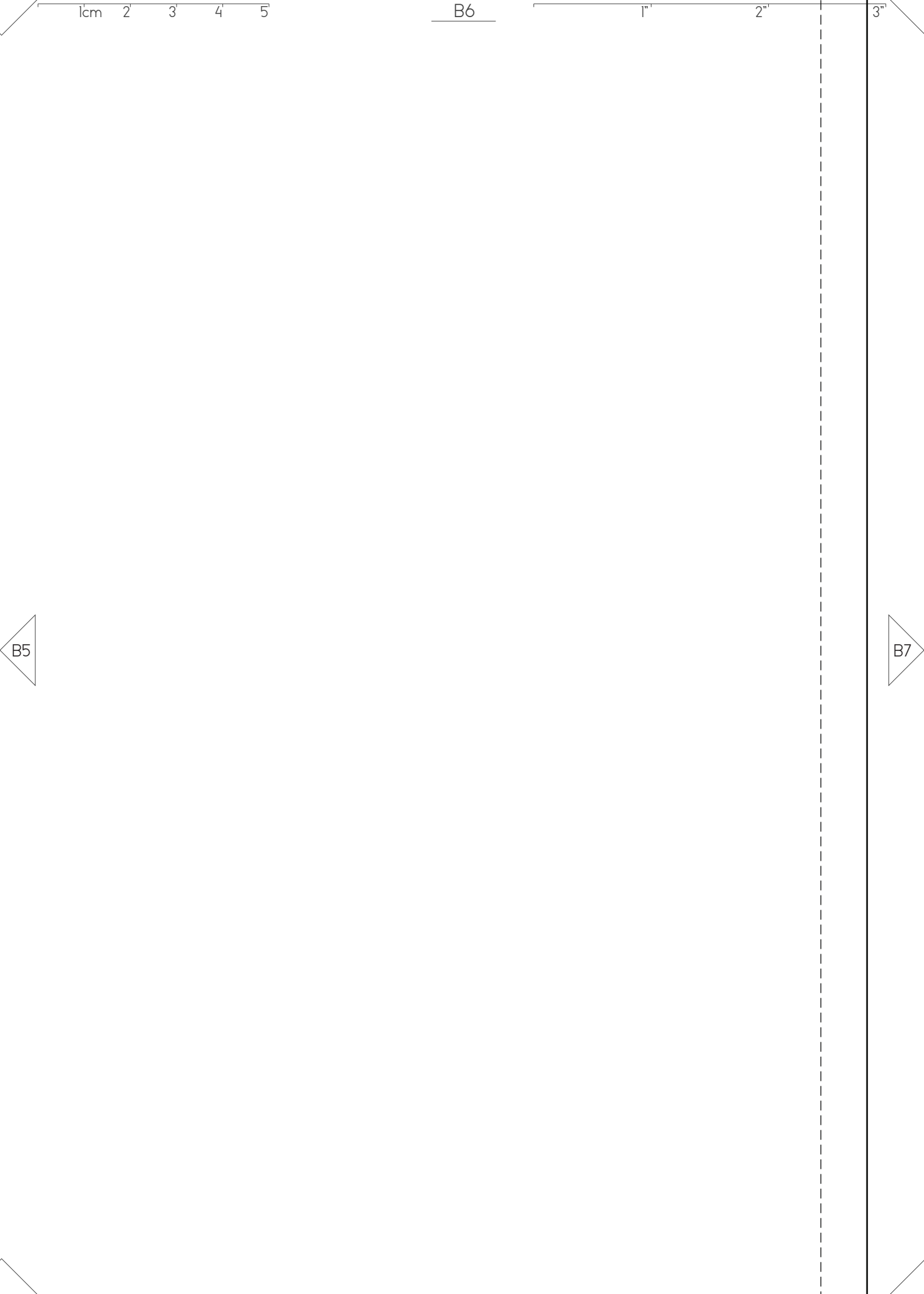


3"

CENTER BACK/ FRONT

## LEAVE OPEN FOR BELT TIE

B6



1cm 2 3 4 5

B6

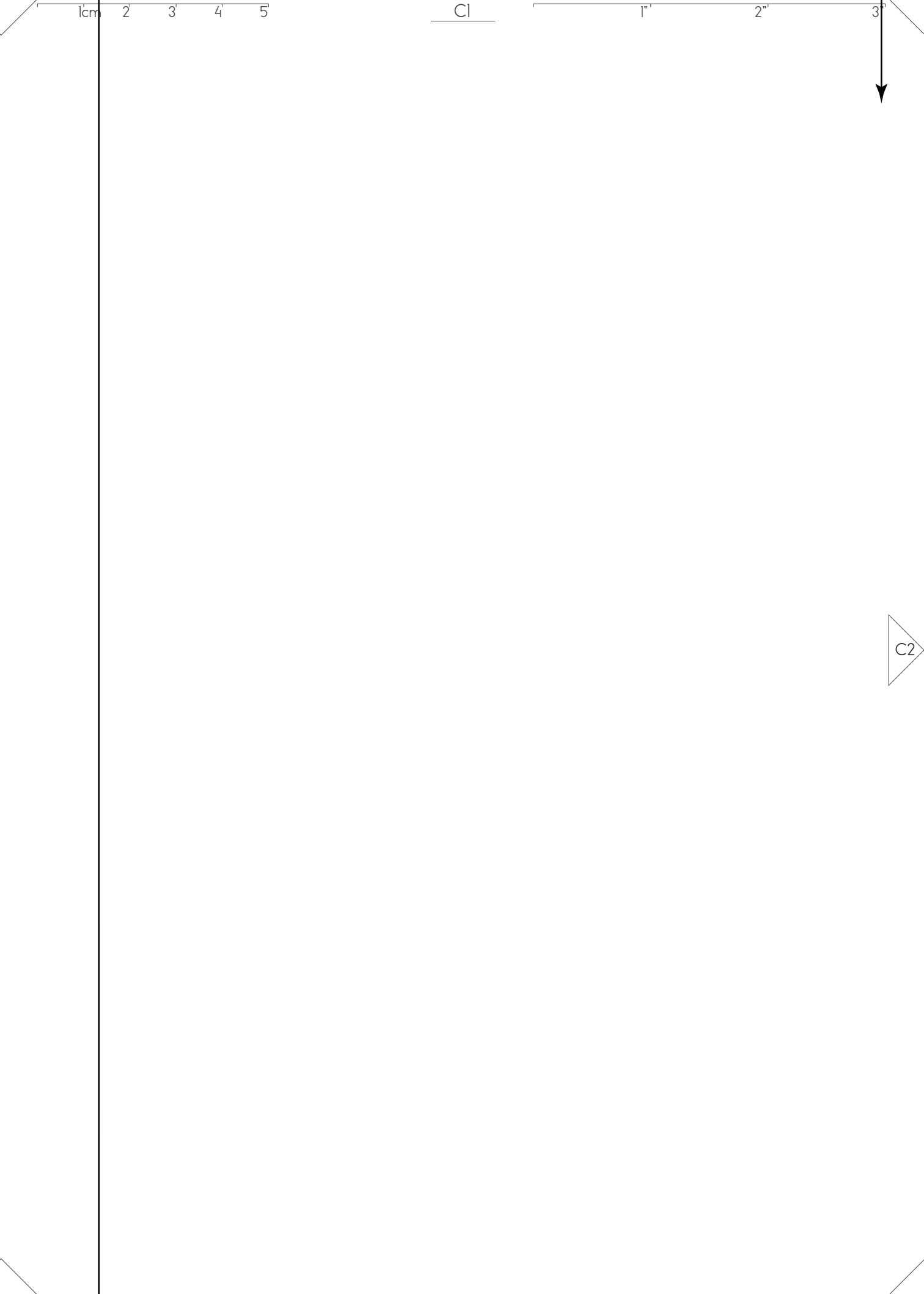
1"

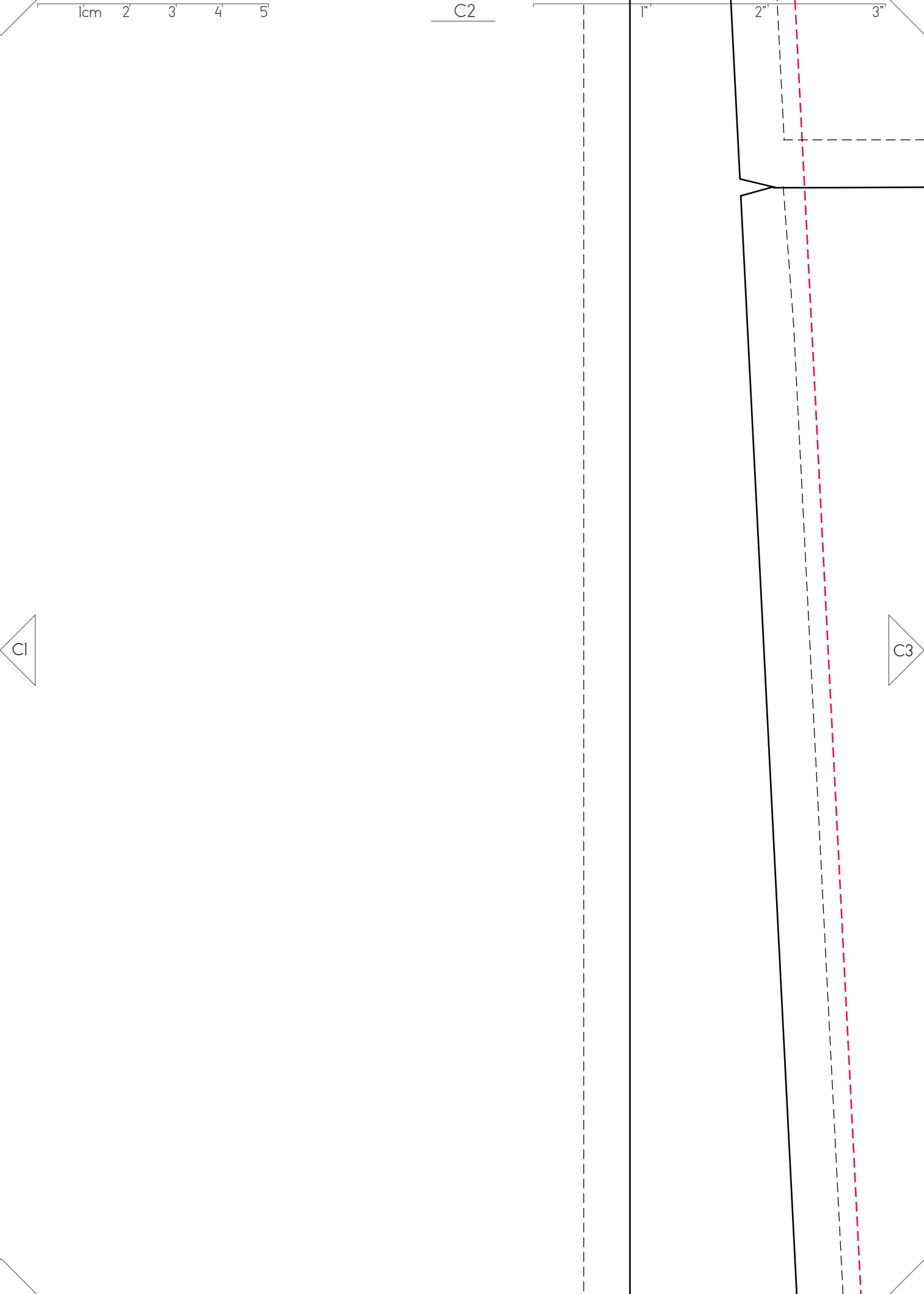
2"

3"

B5

B7







1cm 2 3 4 5

C3

1"

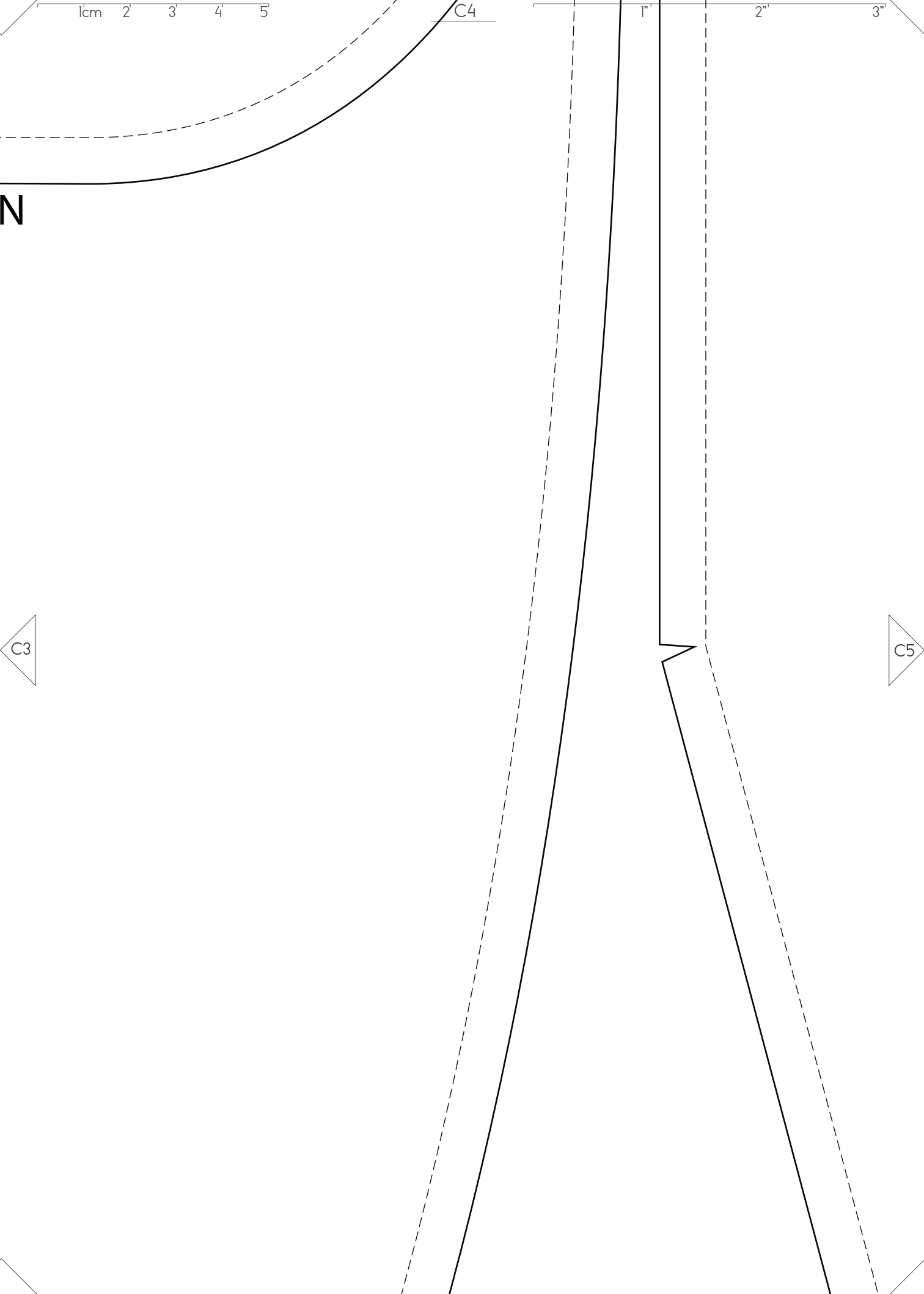
2"

3"

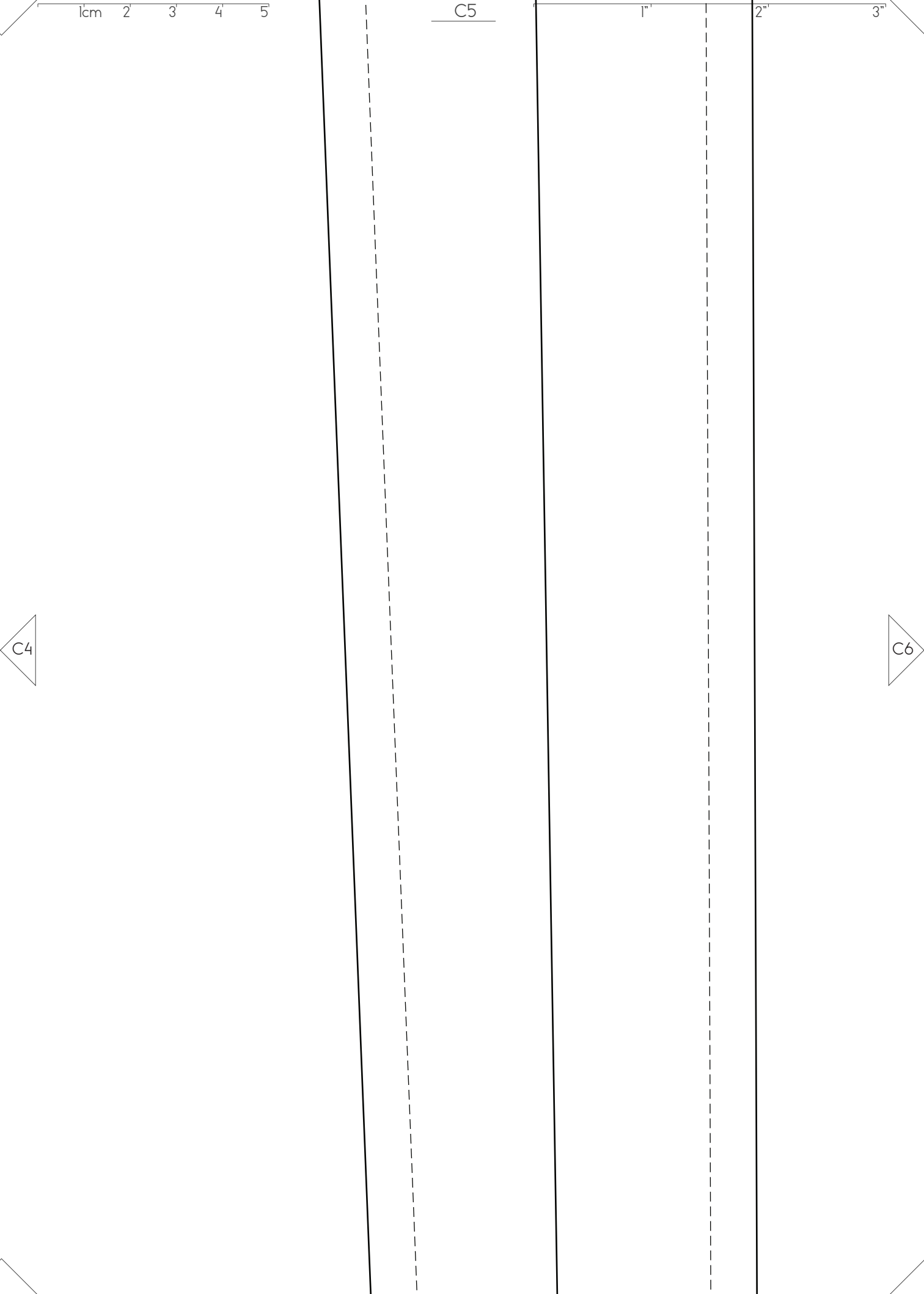
CUT HERE FOR SHORT SLEEVE VERSIO

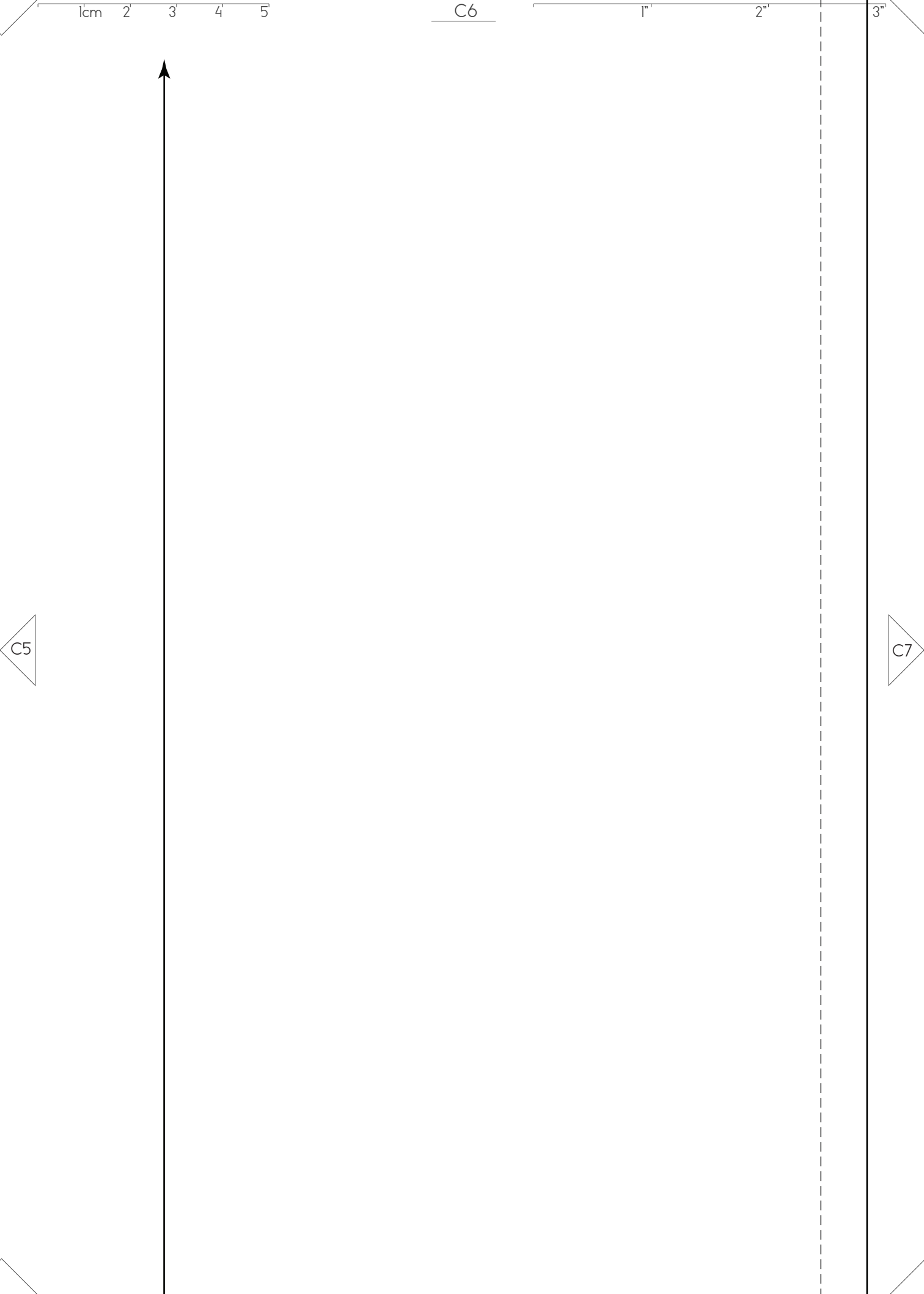
C2

C4









1cm 2 3 4 5

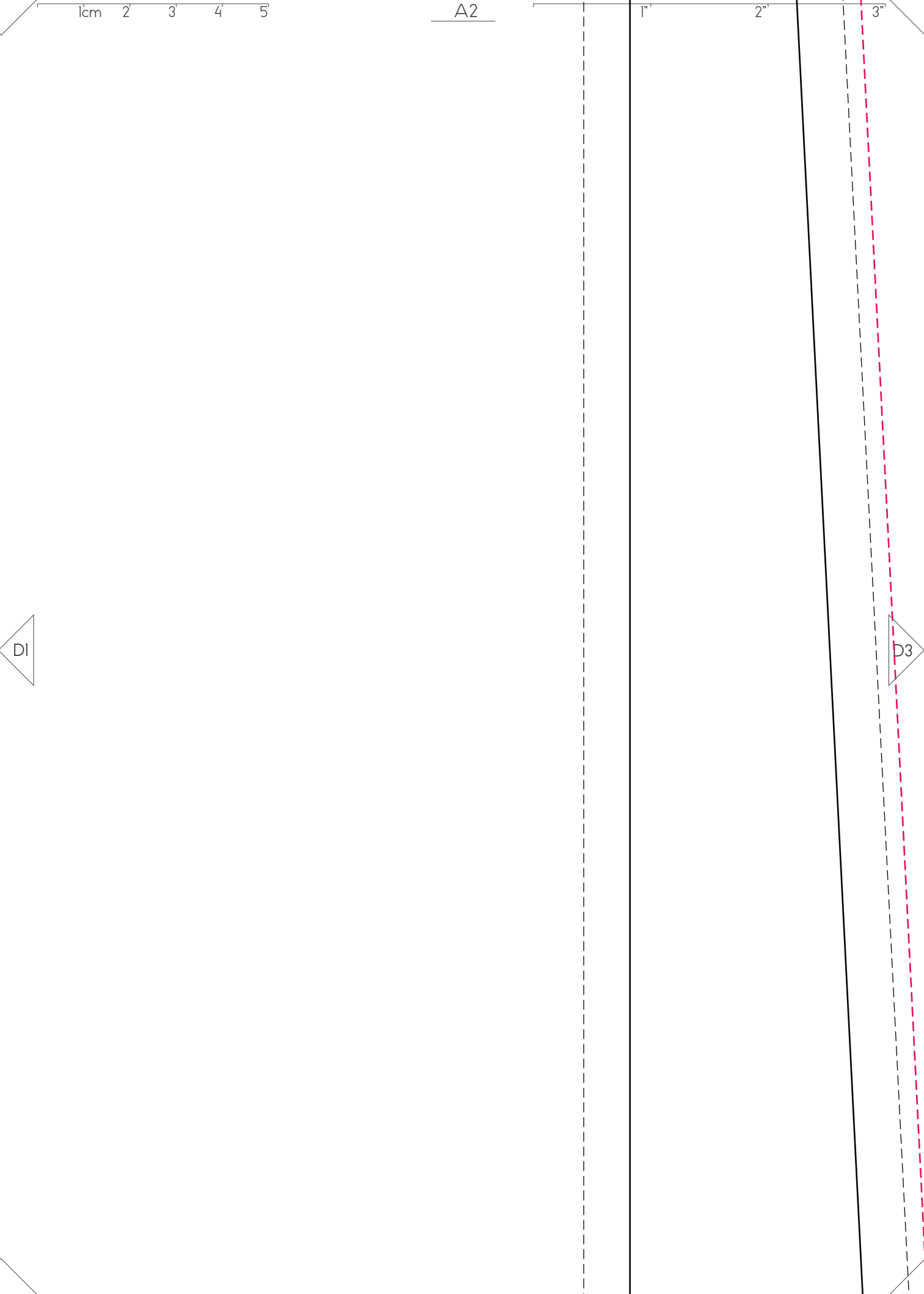
A1

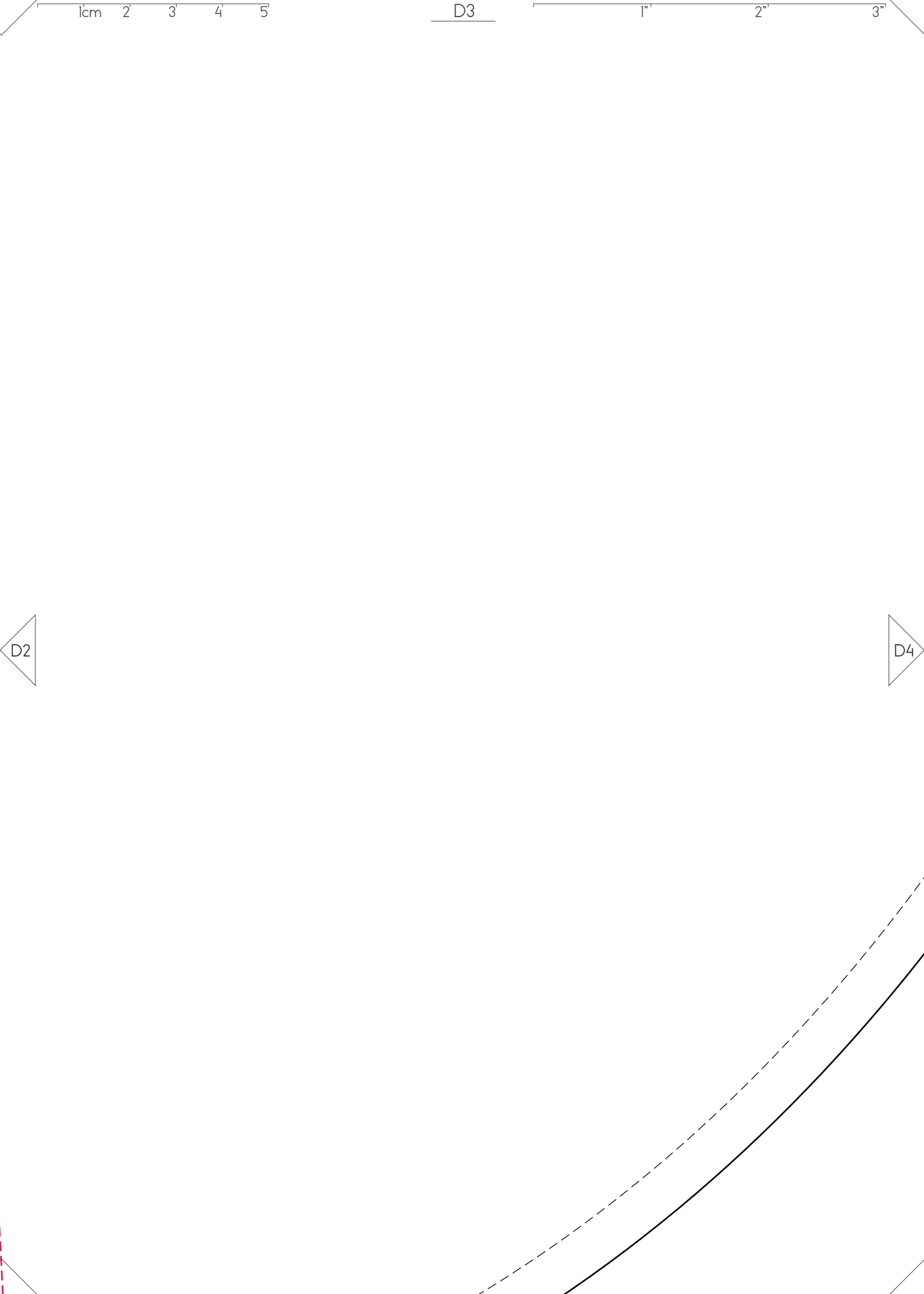
1"

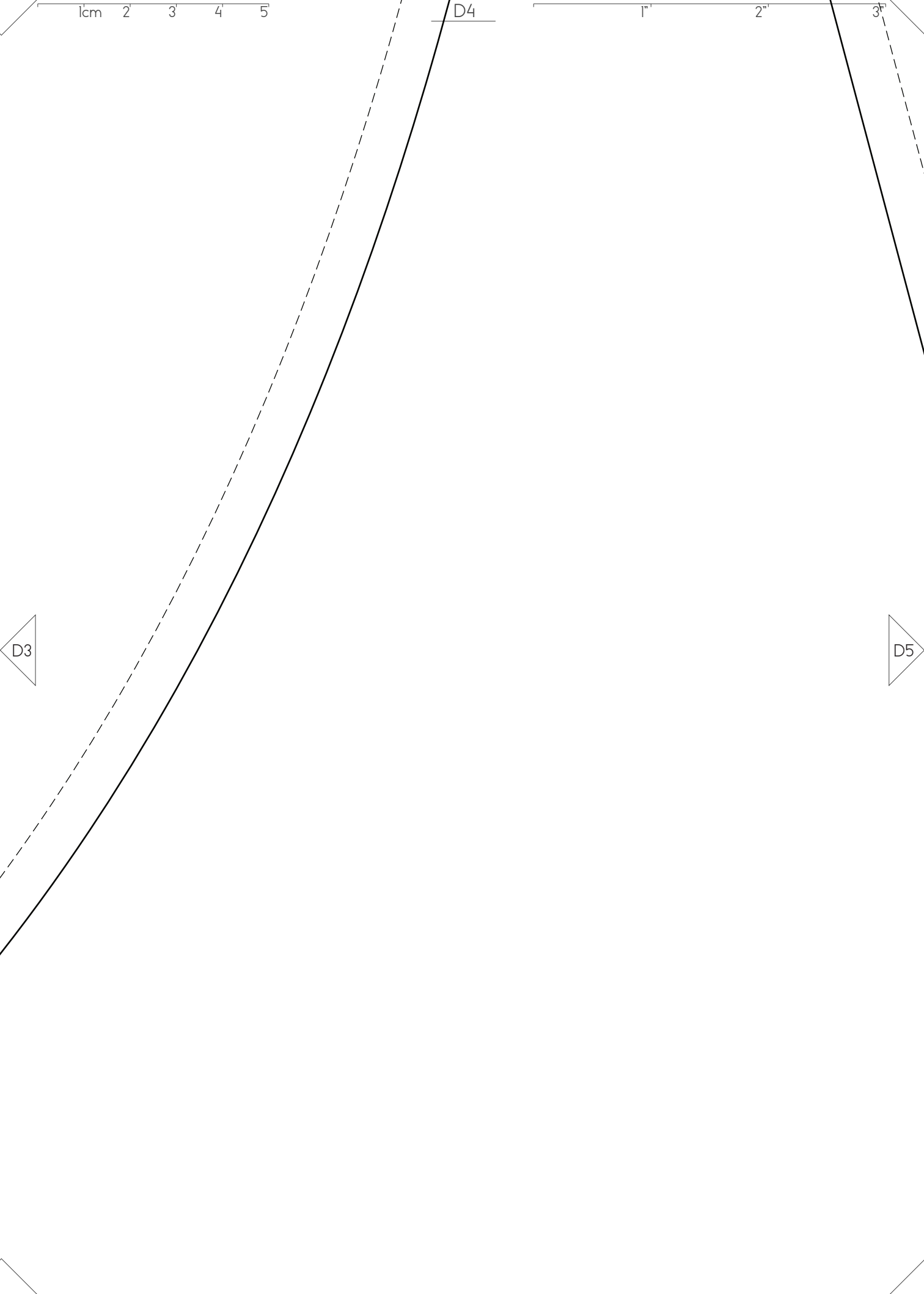
2"

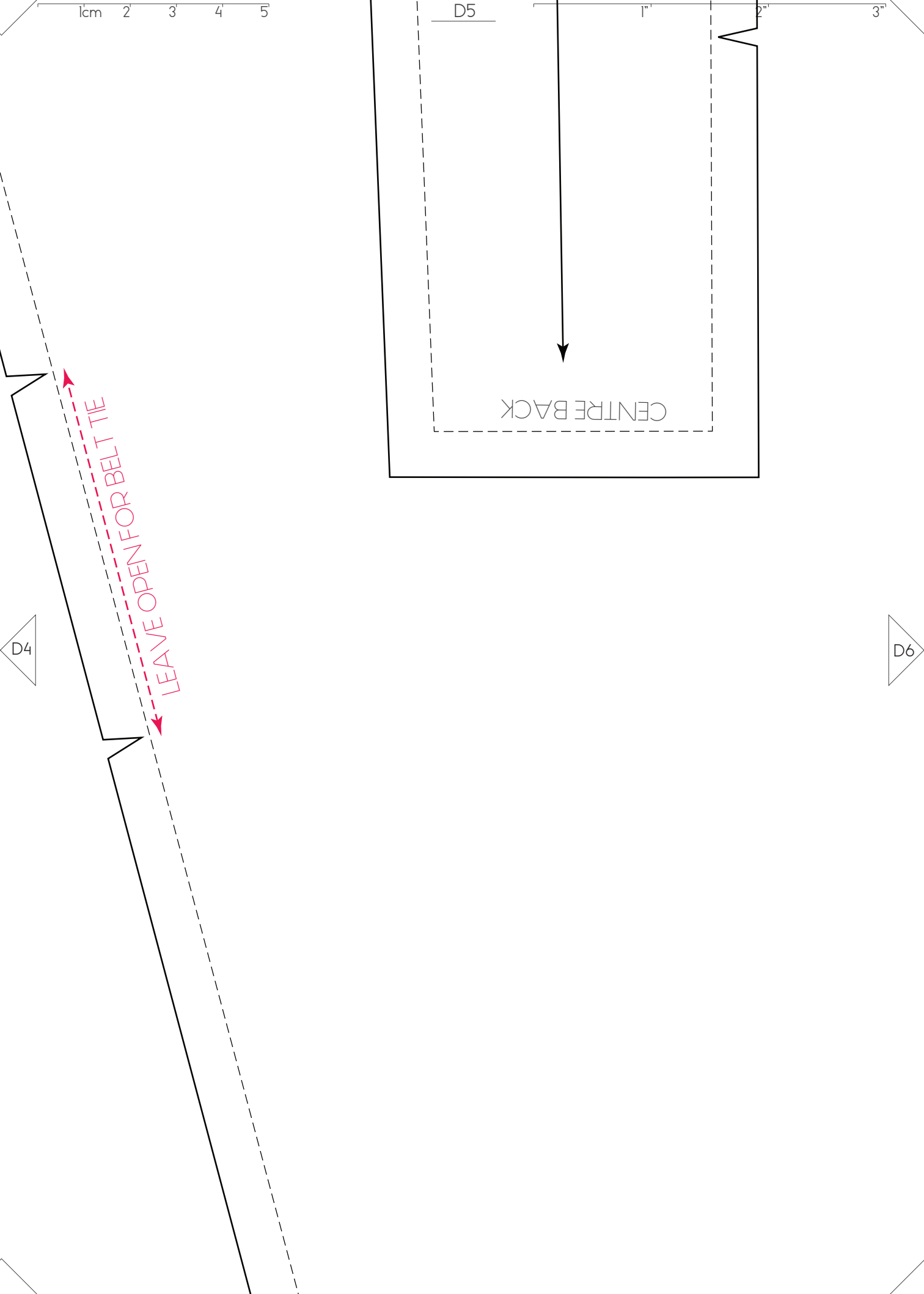
3"

D2









1cm 2 3 4 5

1" 2" 3"

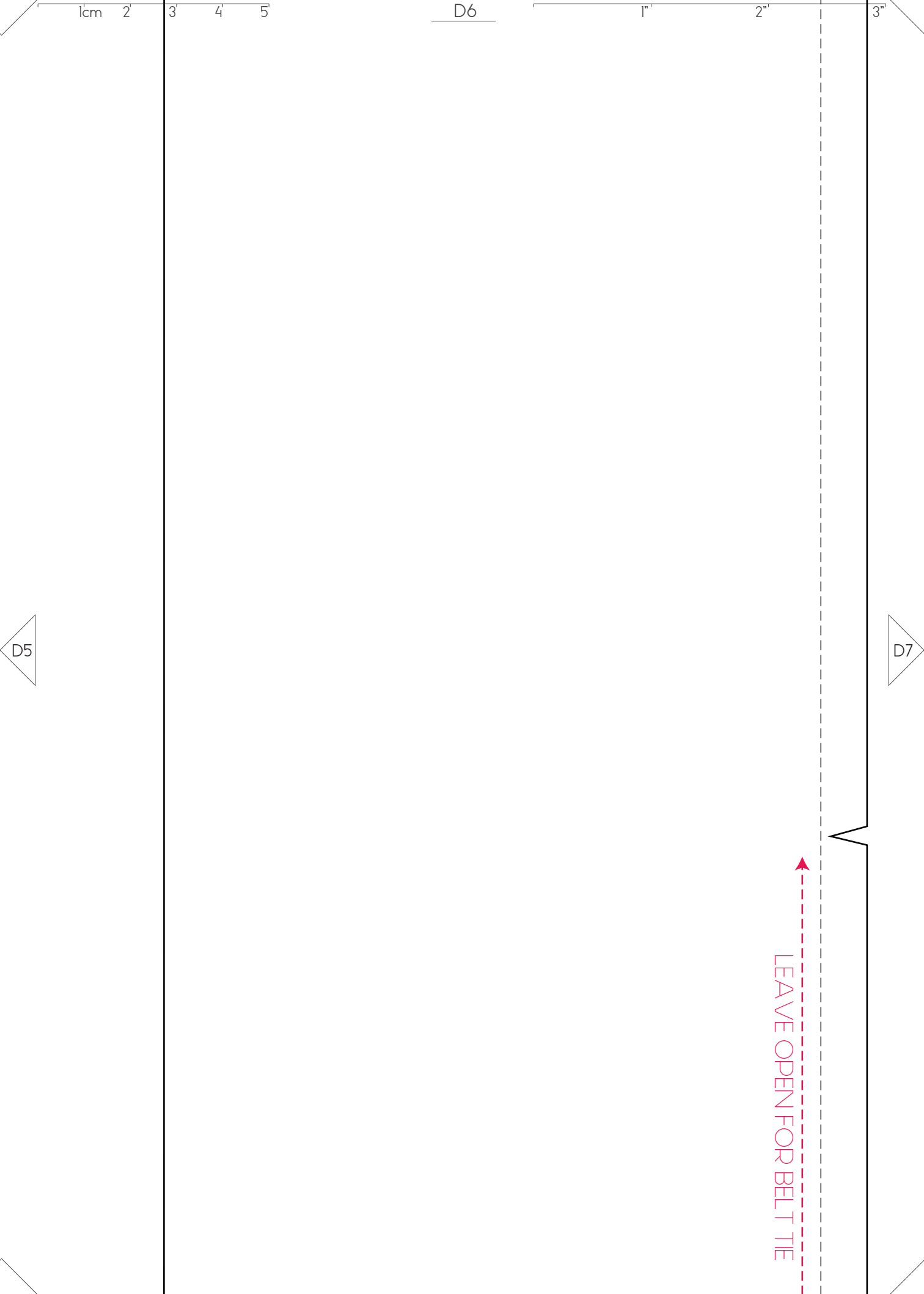
D5

CENTRE BACK

D4

D6

LEAVE OPEN FOR BELT TIE





1cm 2 3 4 5

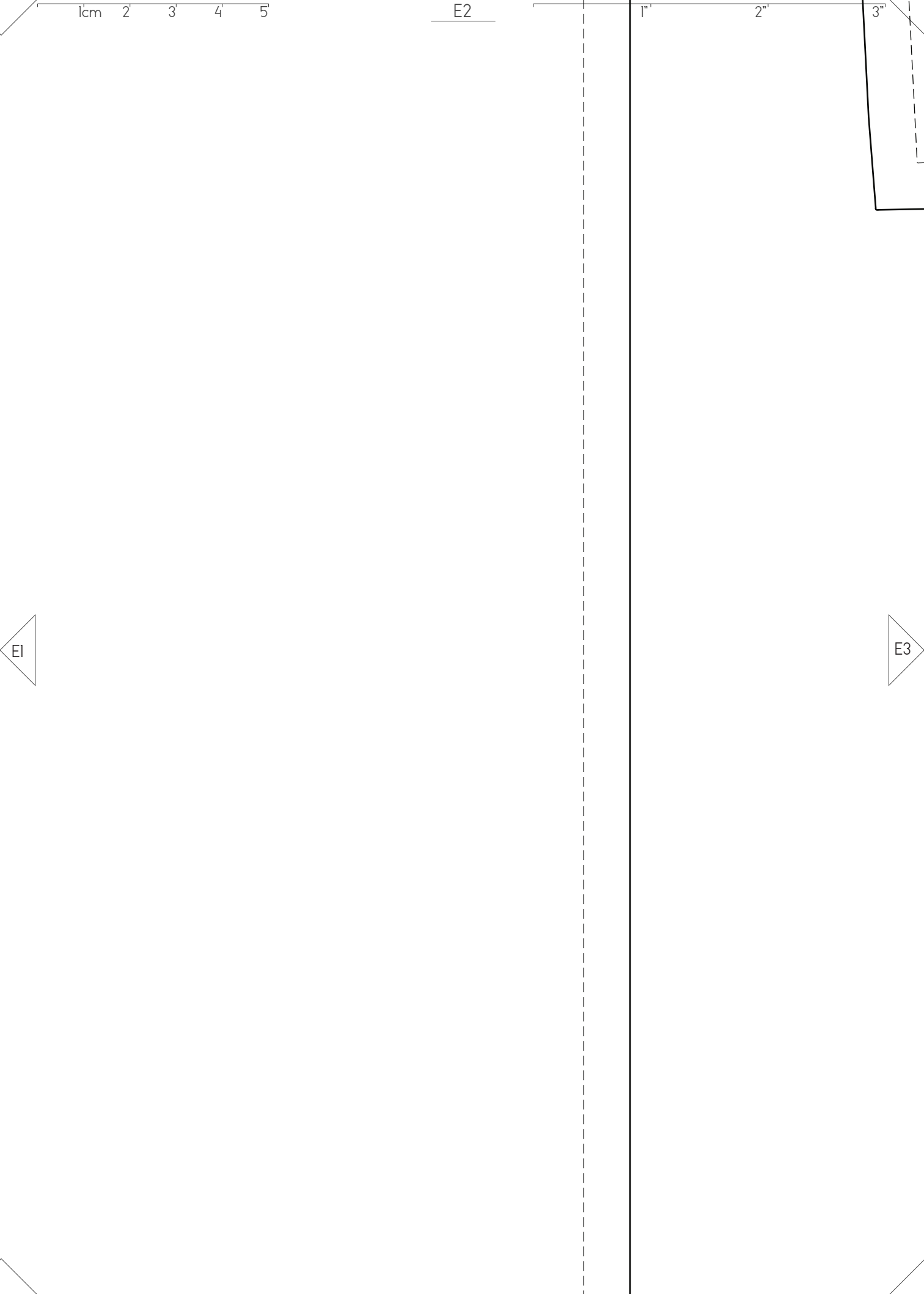
E1

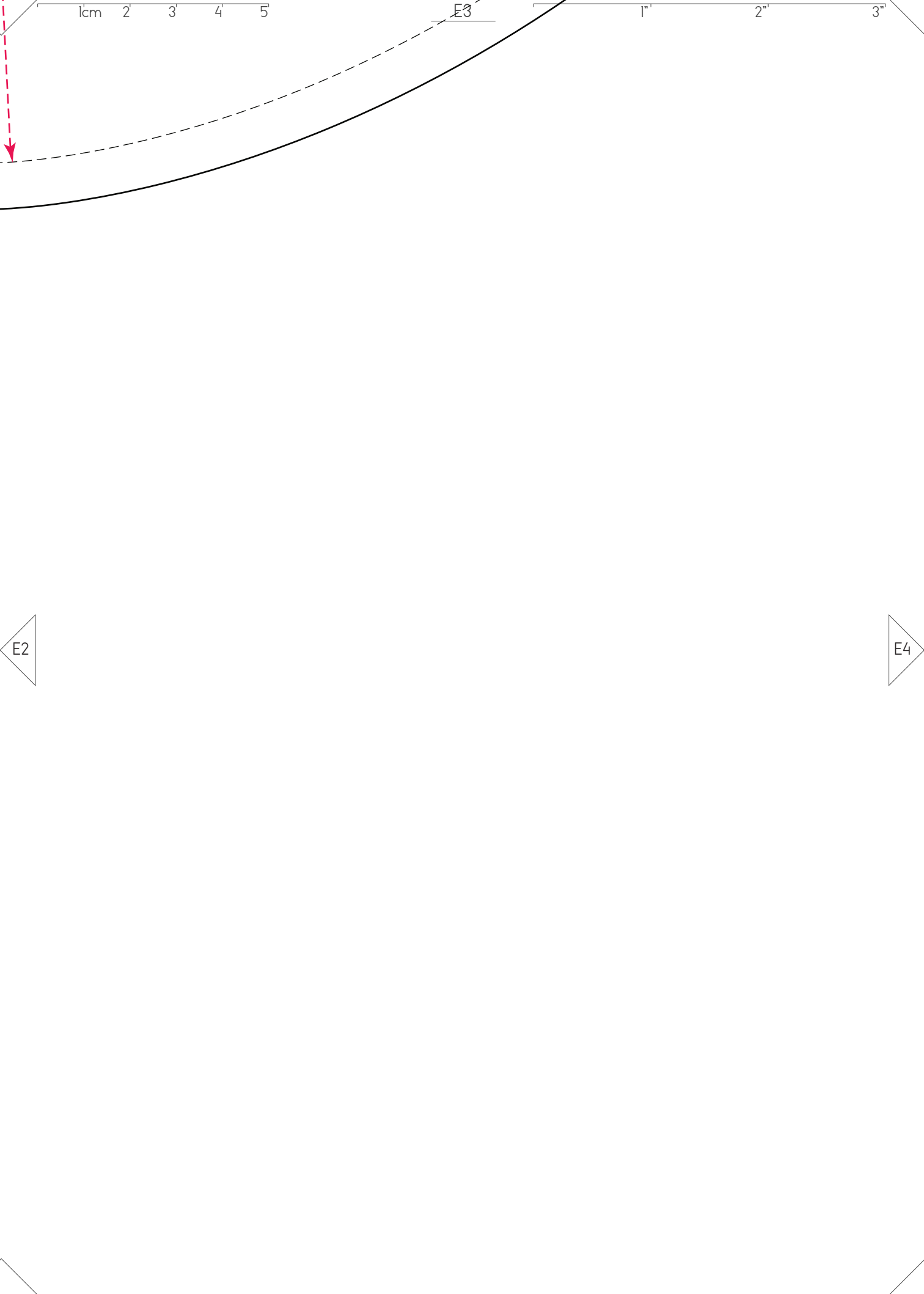
1"

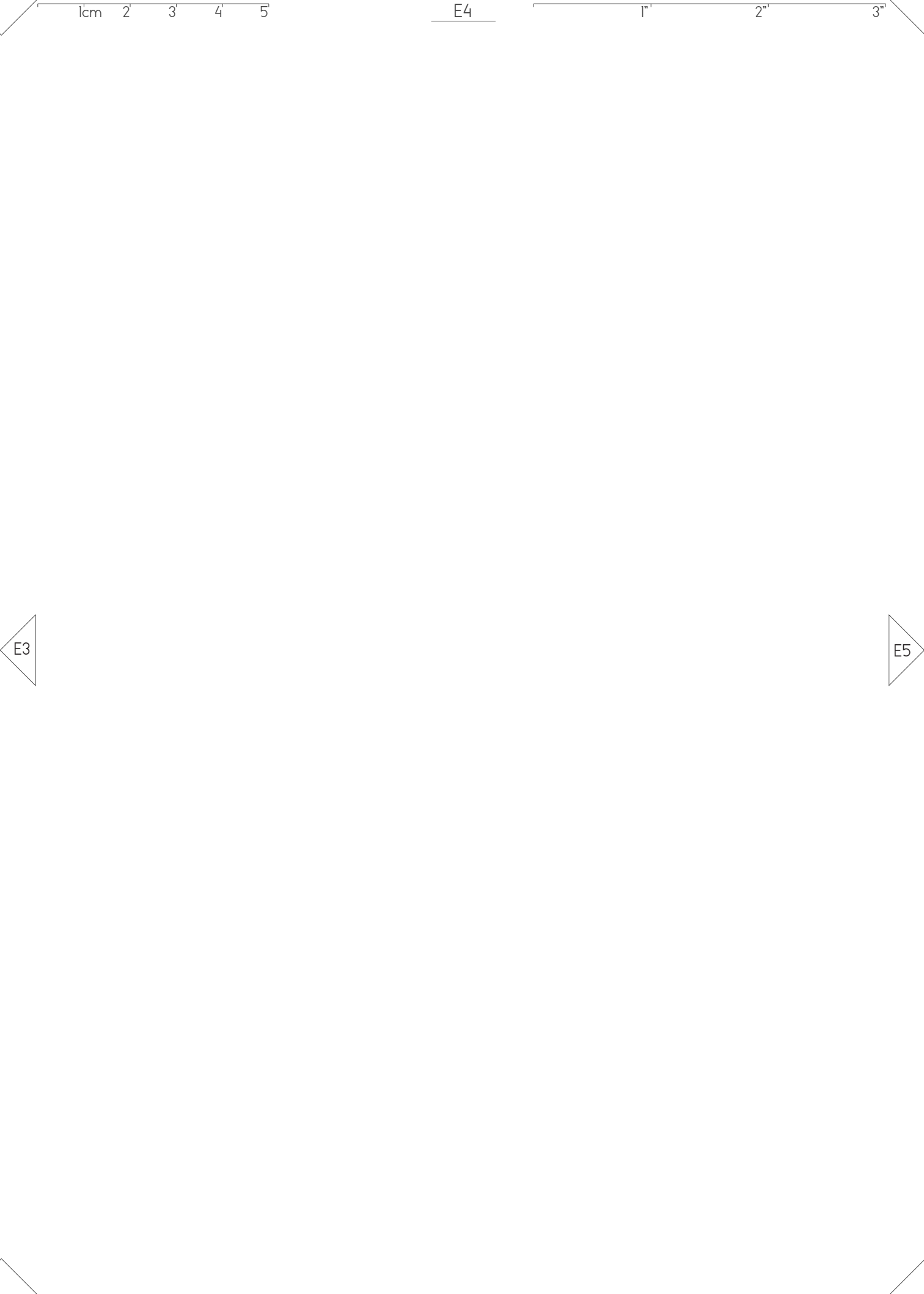
2"

3"

E2



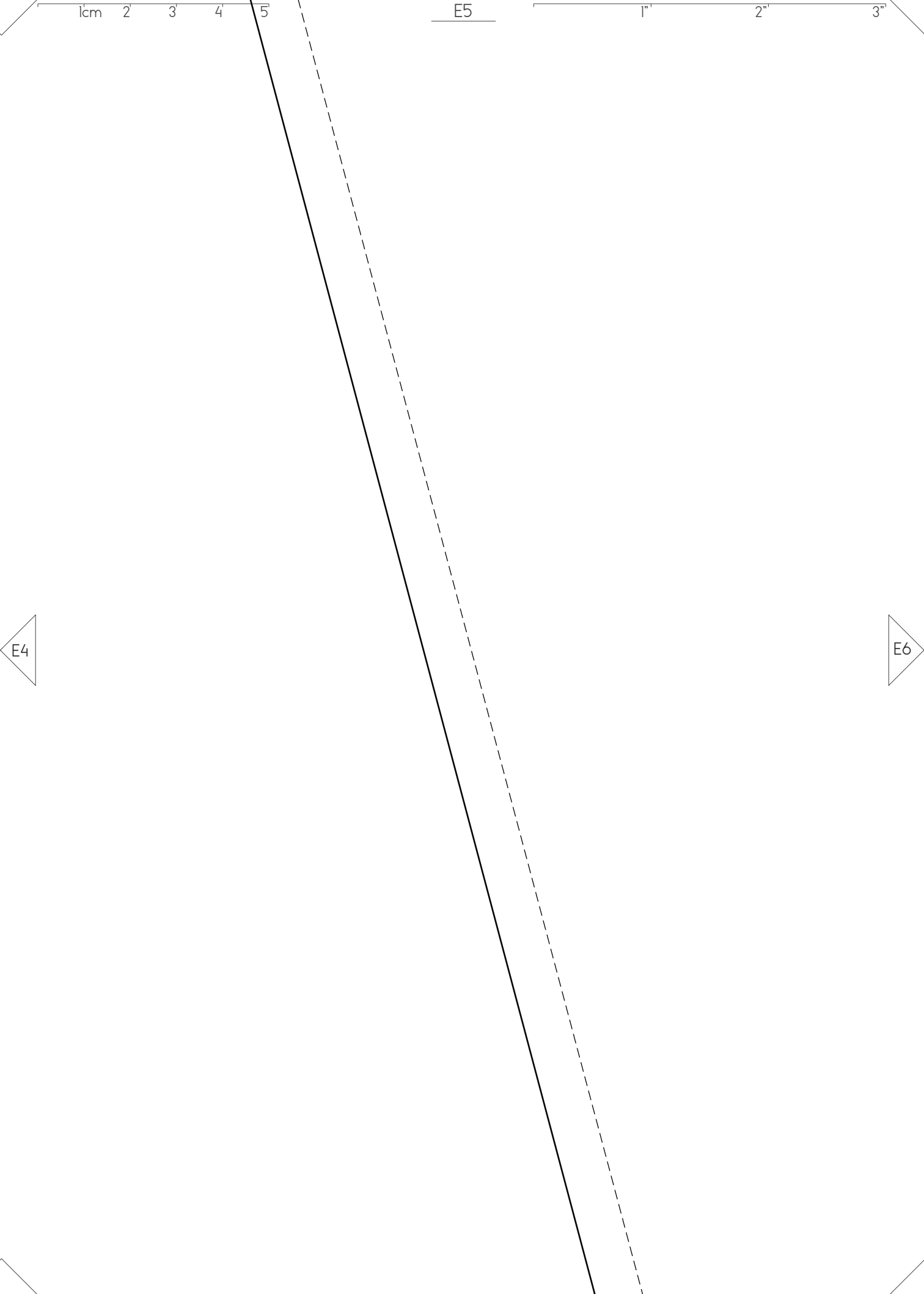


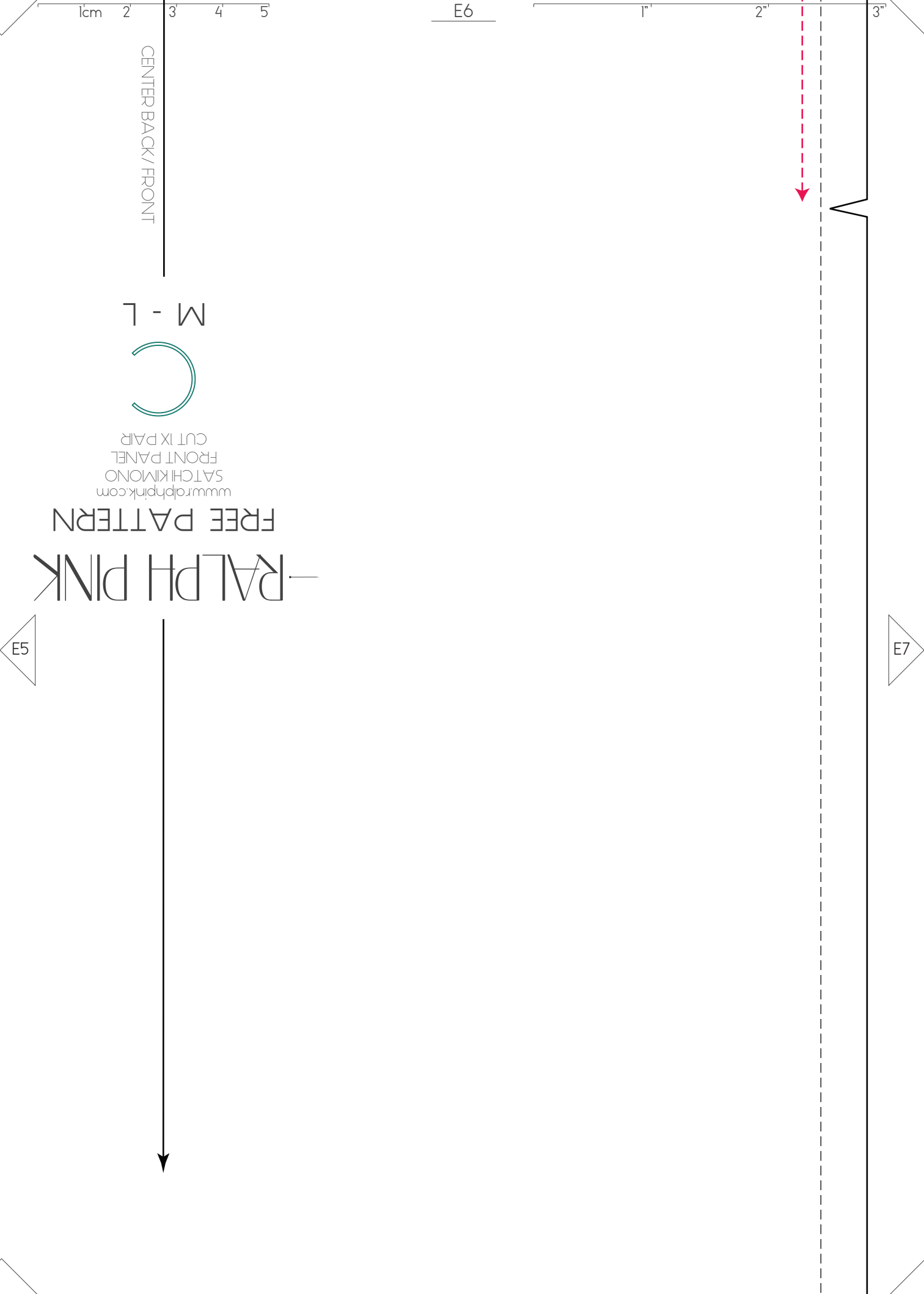


E4

E3

E5





CENTER BACK / FRONT

M - L



www.ralphpink.com  
SATCHIKIMONO  
FRONT PANEL  
CUT IX PAIR

FREE PATTERN

RALPH PINK

E5

E7

E6

1"

2"

3"



1cm

2

3

4

5

F1

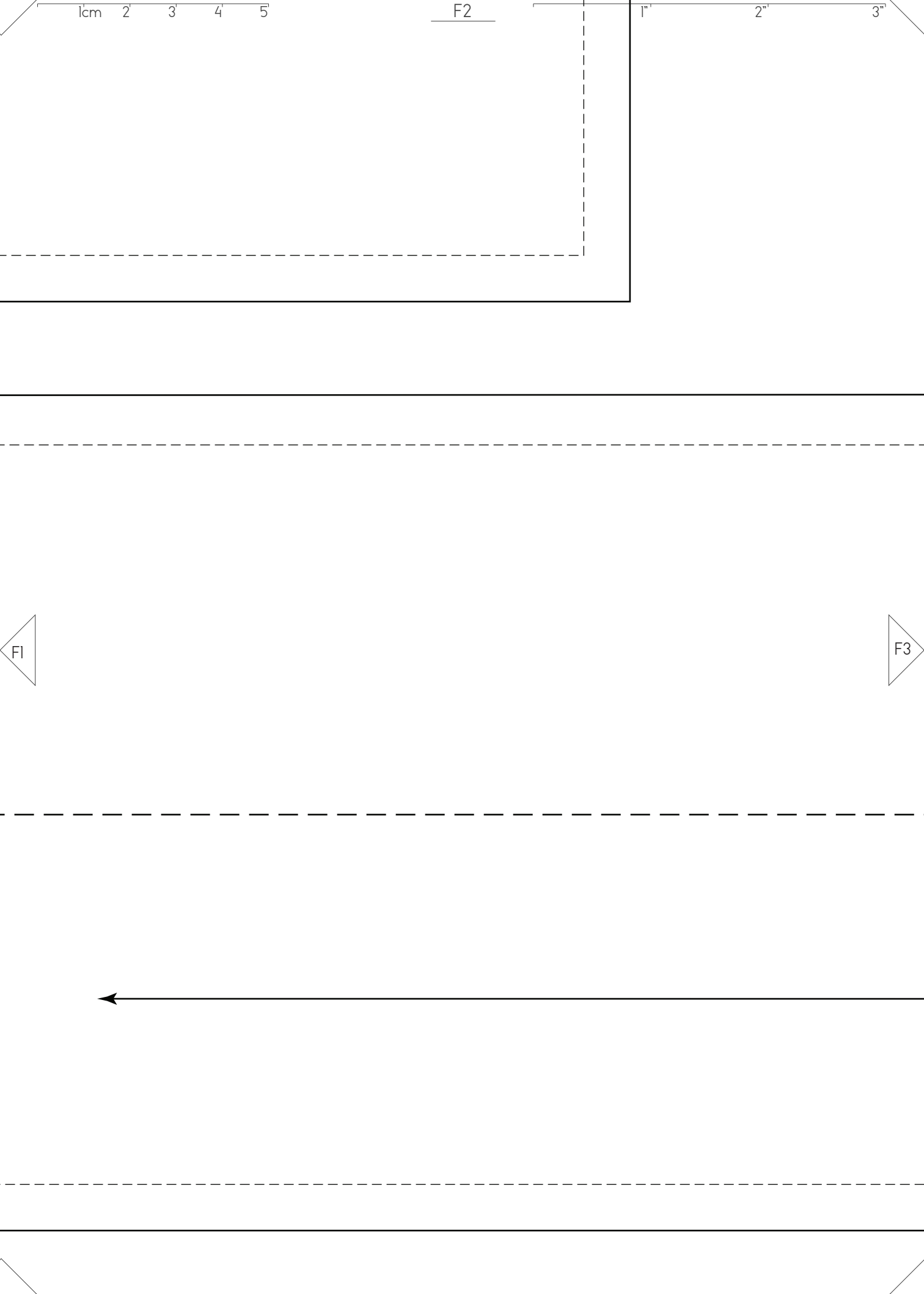
1"

2"

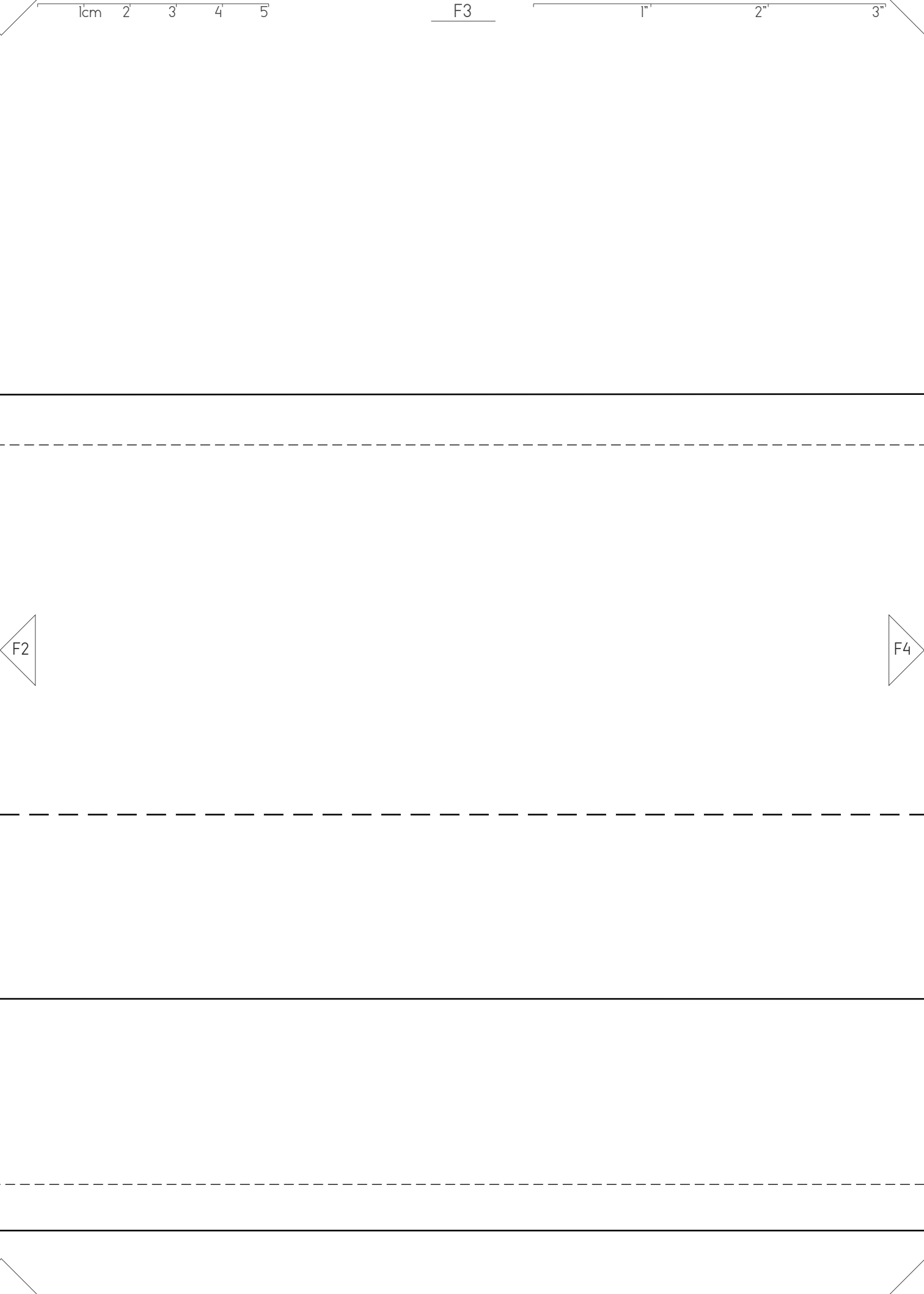
3"

F2

CENTRE BACK / FOLD LINE







1cm 2 3 4 5

F3

1"

2"

3"

F2

F4

1cm 2 3 4 5

F4

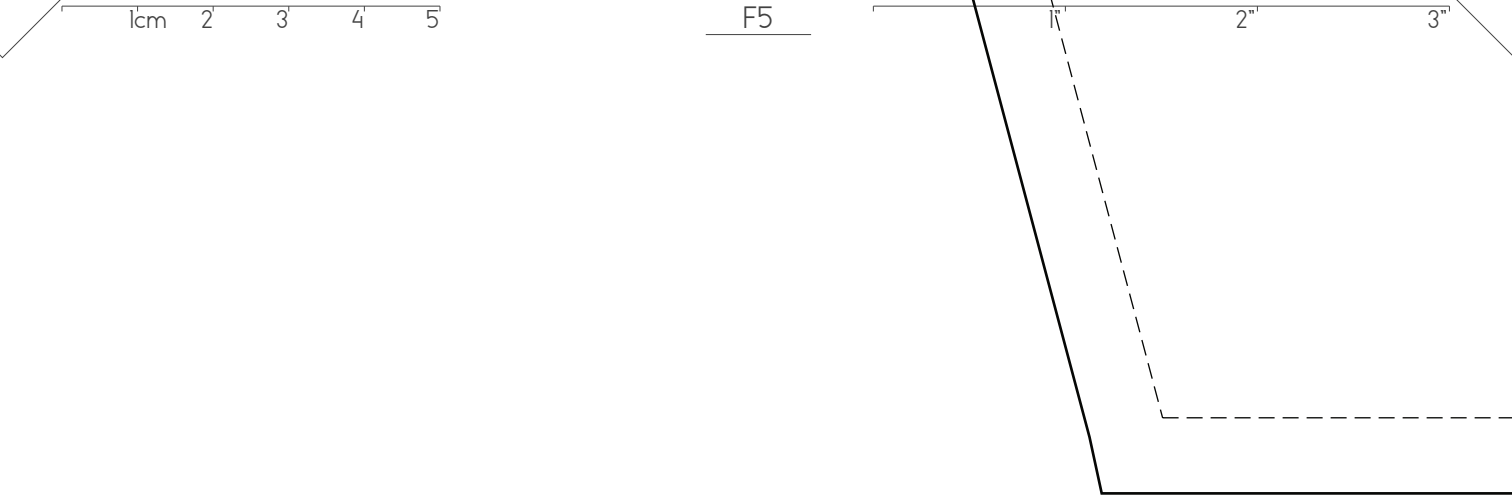
1"

2"

3"



CENTER BACK



FOLD LINE

BACK / FRONT

RALPH PINK  
FREE PATTERN  
www.ralphpink.com  
SATCHEL KIMONO  
BELT / TIE  
CUT X 1 ON FOLD  
M - L

