

CENTRE BACK / FOLD LINE

GRAIN LINE

For more amazing patterns,
with instructions sets - visit
www.ralphpink.com

UK10



www.ralphpink.com
1950'S CARMEN DRESS
BACK FACING PANEL
CUT X1 ON FOLD

FREE PATTERN

RALPH PINK

A2

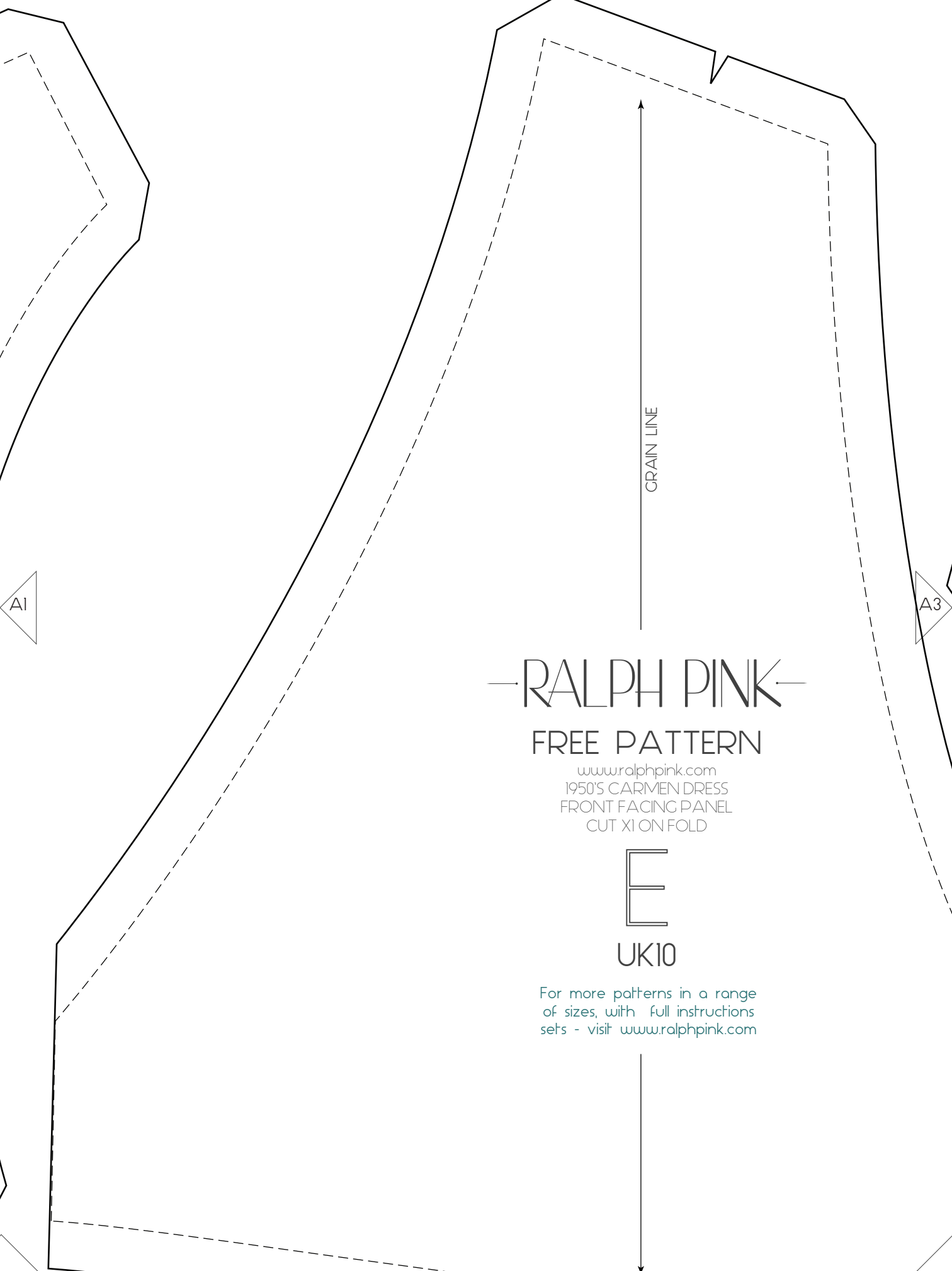
1cm 2 3 4 5

A2

1"

2"

3"



RALPH PINK

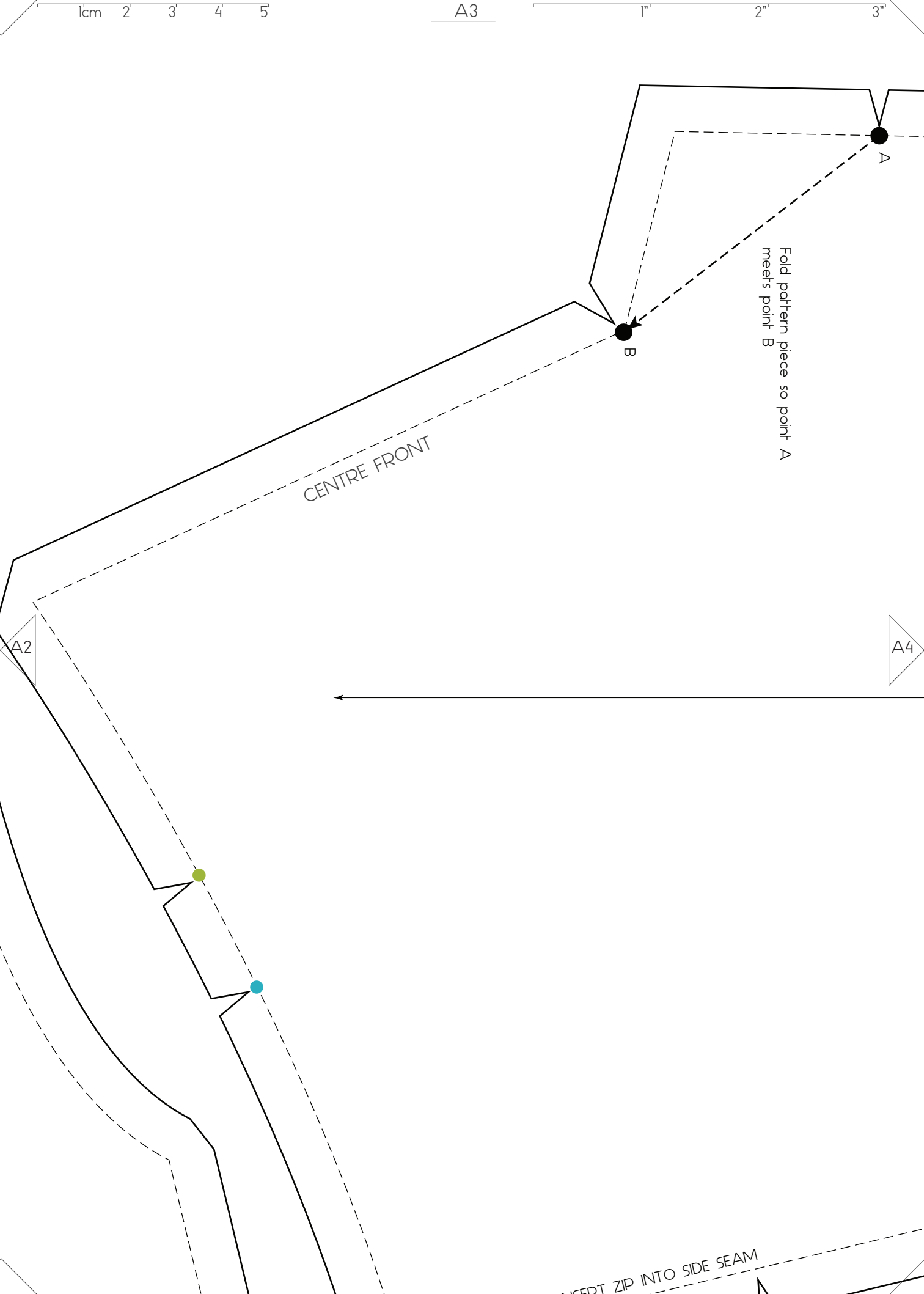
FREE PATTERN

www.ralphpink.com
1950'S CARMEN DRESS
FRONT FACING PANEL
CUT XI ON FOLD

E

UK10

For more patterns in a range
of sizes, with full instructions
sets - visit www.ralphpink.com



1cm 2 3 4 5

A4

1"

2"

3"

CENTRE FRONT

A5

A3

GRAIN LINE

For more patterns in a range
of sizes, with full instructions
sets - visit www.ralphpink.com

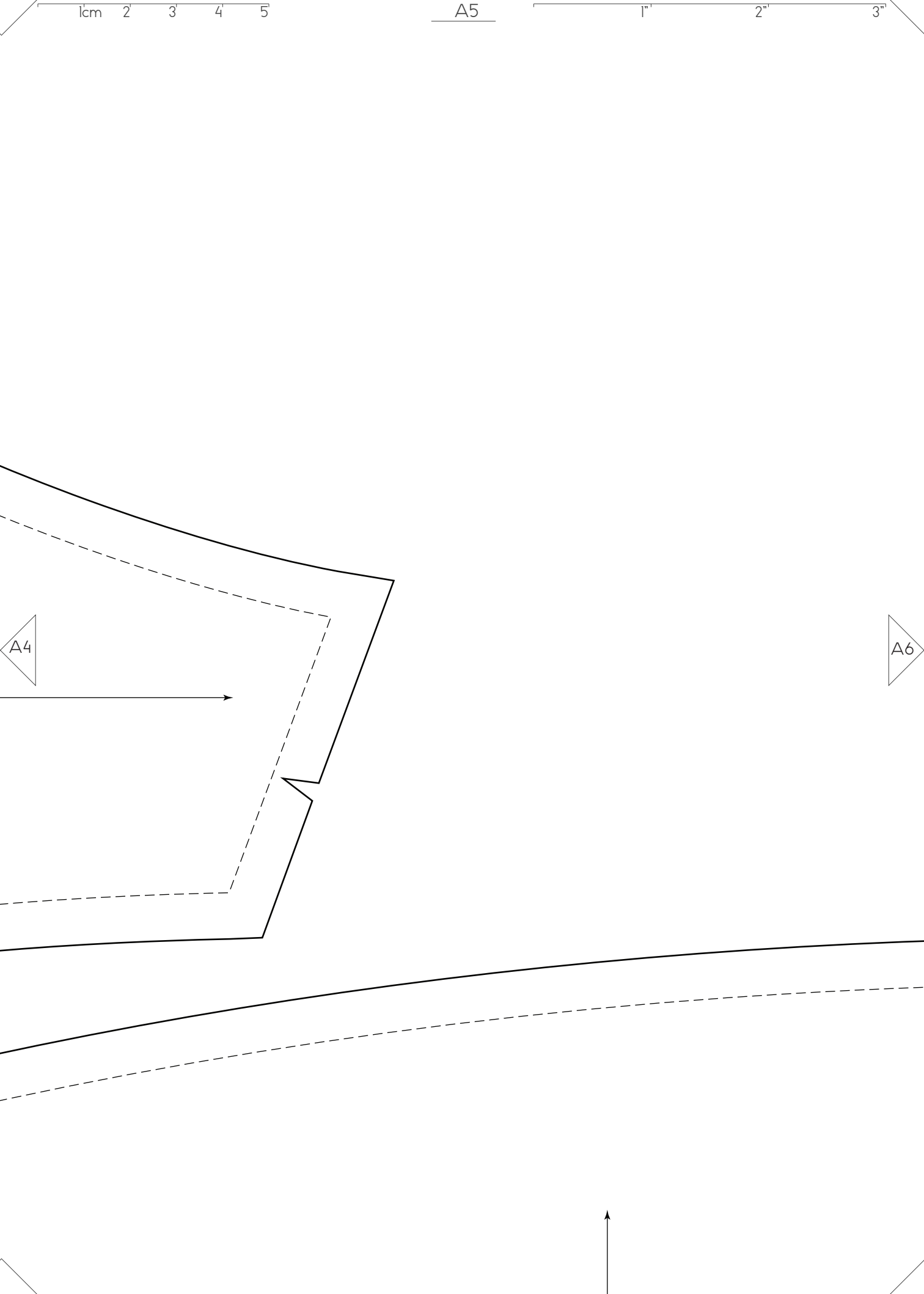
UK10

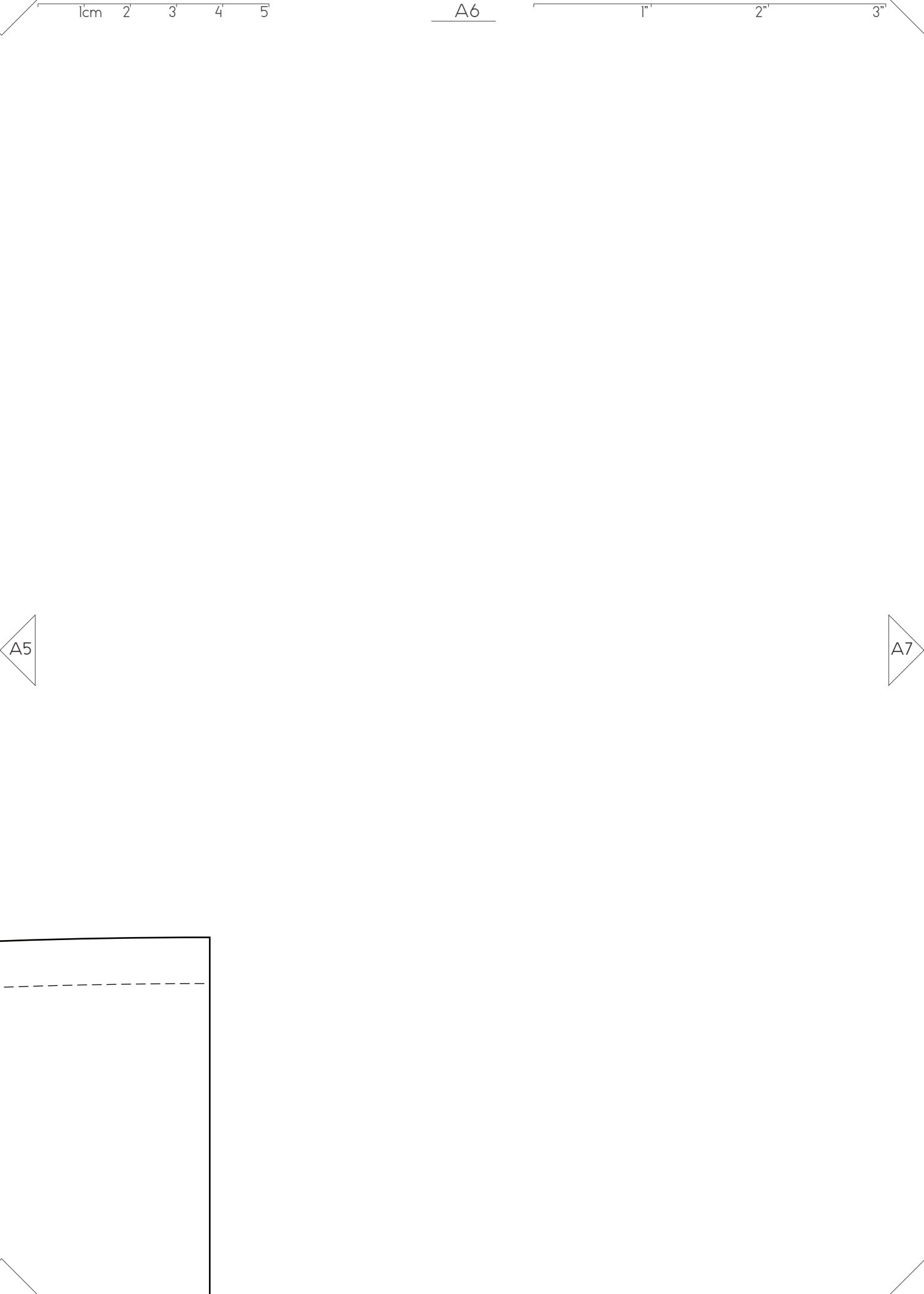


www.ralphpink.com
1950'S CARMEN DRESS
FRONT PANEL
CUT X1 PAIR

FREE PATTERN

RALPH PINK





1cm 2 3 4 5

A6

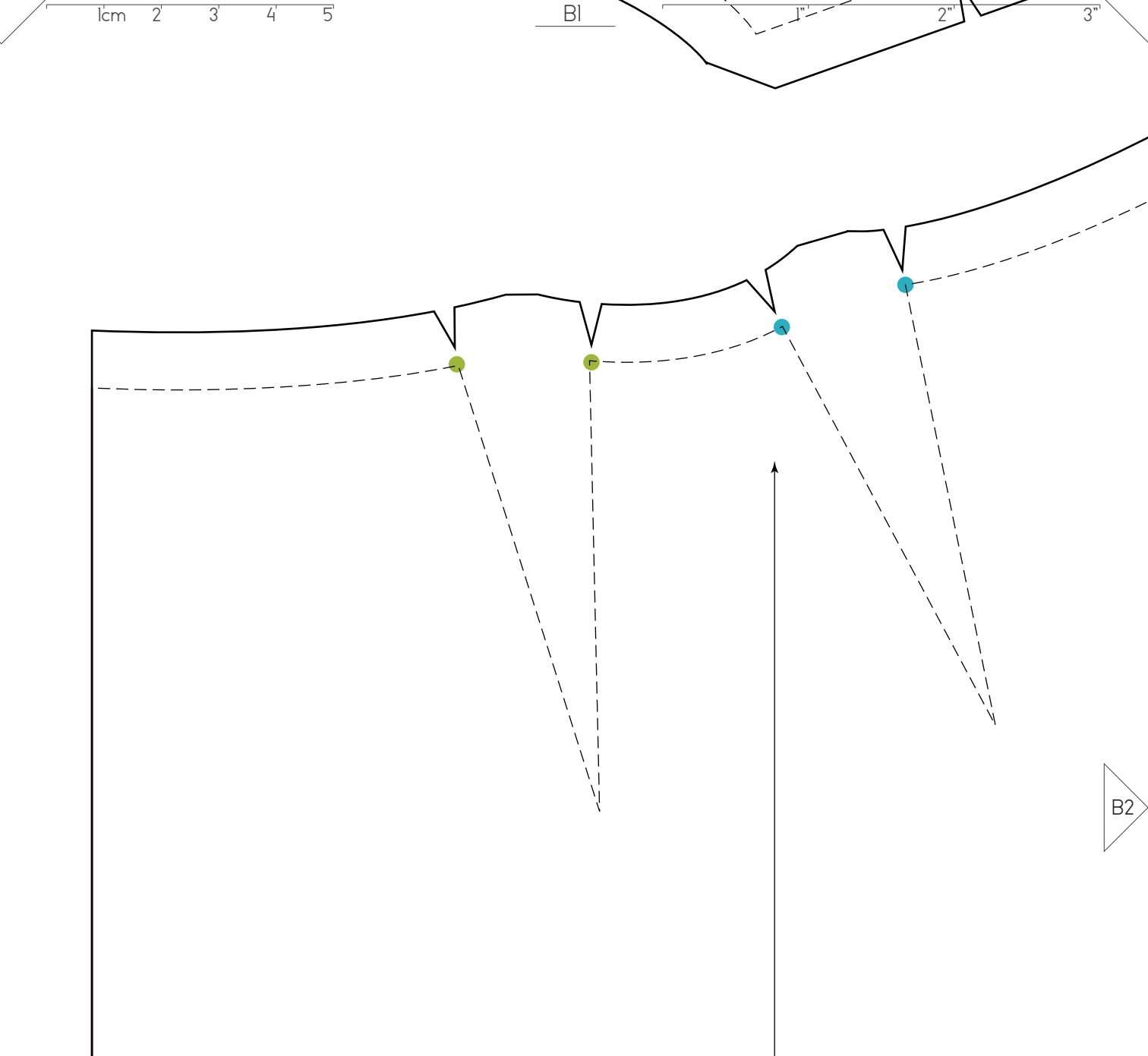
1"

2"

3"

A5

A7



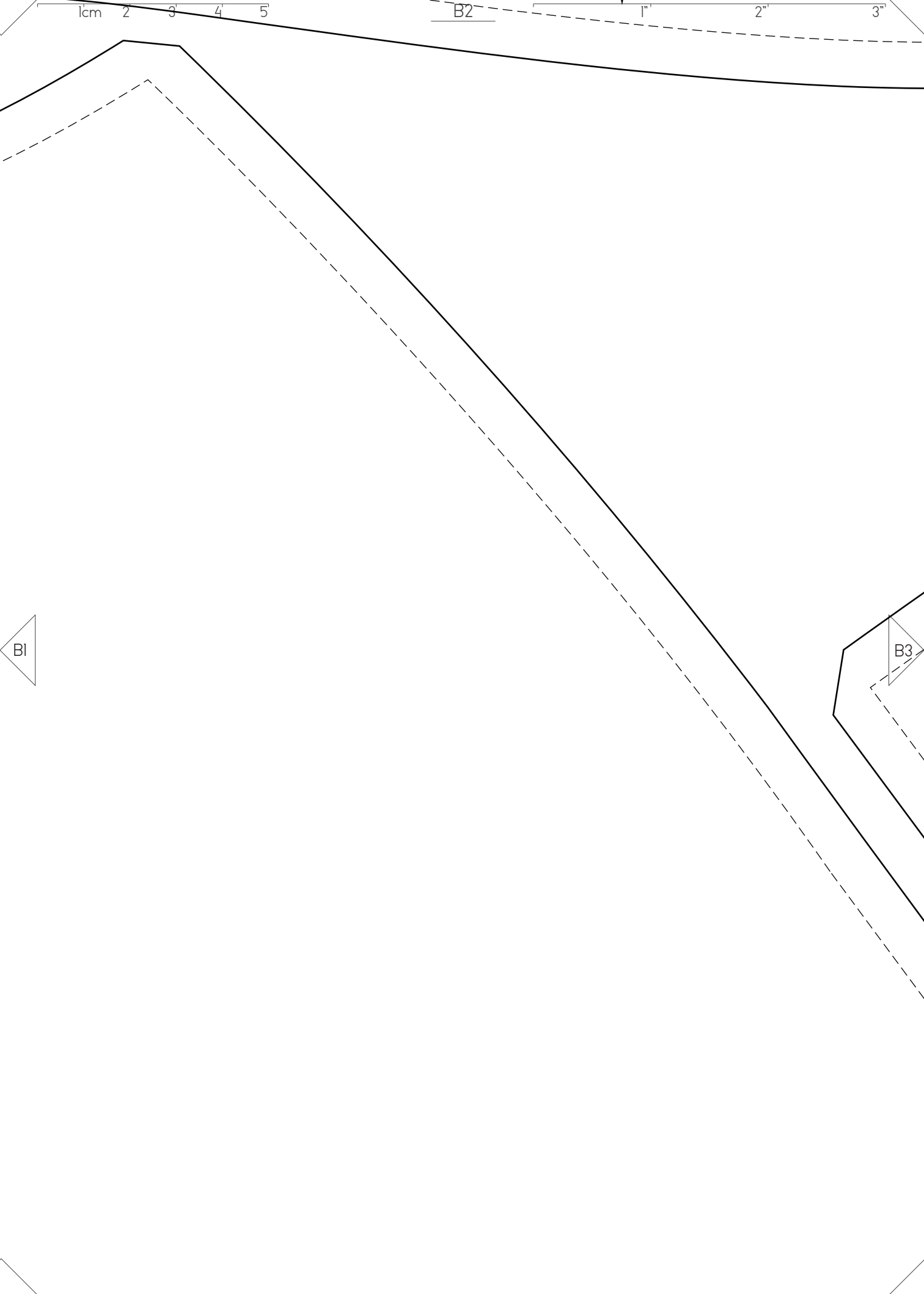
RALPH PINK

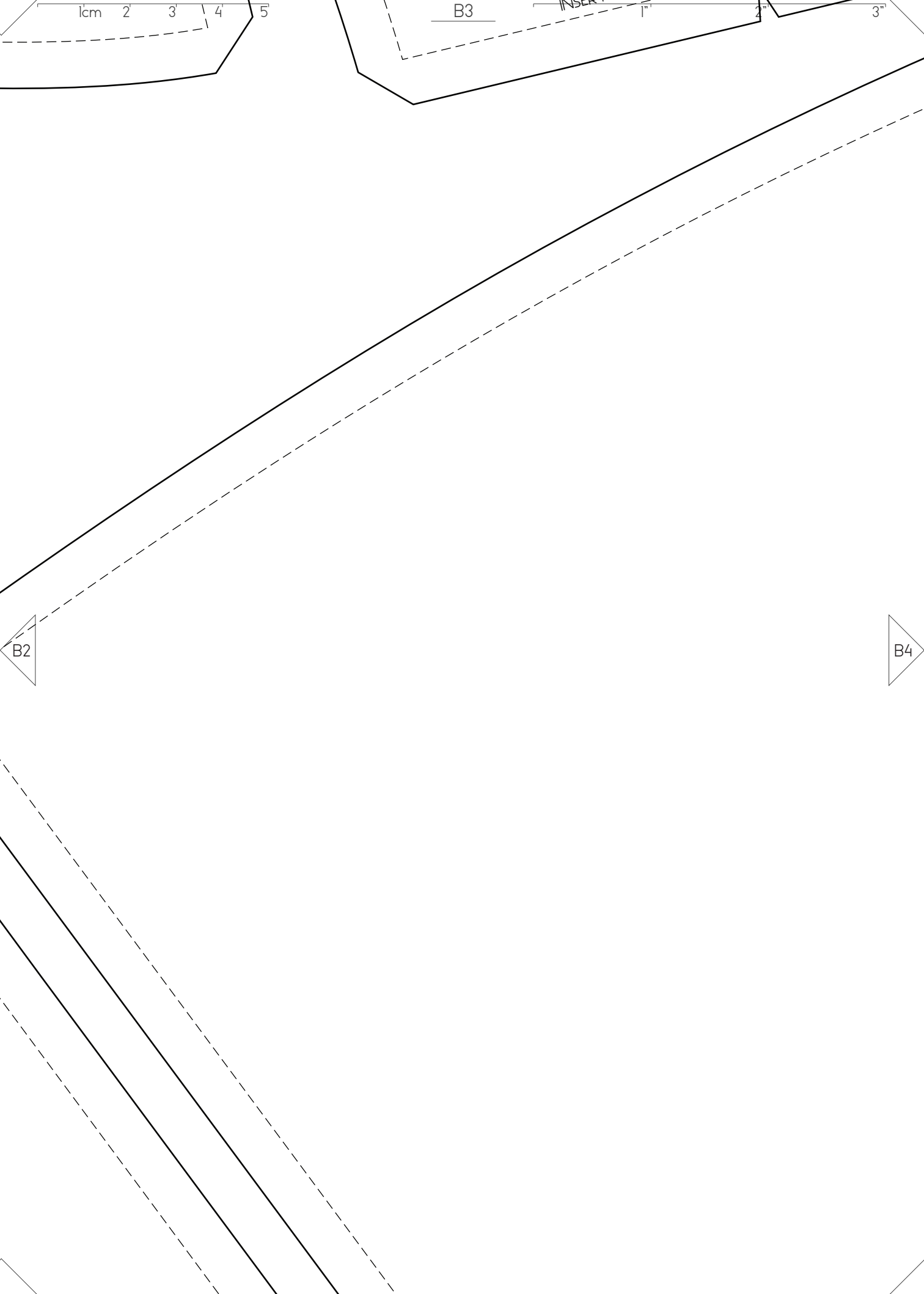
FREE PATTERN

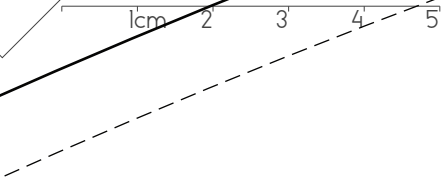
www.ralphpink.com
1950'S CARMEN DRESS
FRONT SKIRT PANEL
CUT X1 ON FOLD
OR
CUT X2 ADDING 1CM SEAM ALLOWANCE
TO CENTRE FRONT

C
UK10

For more patterns in a range
of sizes, with full instructions







B4



B3

B5

1cm 2 3 4 5

B5

1"

2"

3"



1cm

2

3

4

5

B6

1"

2"

3"

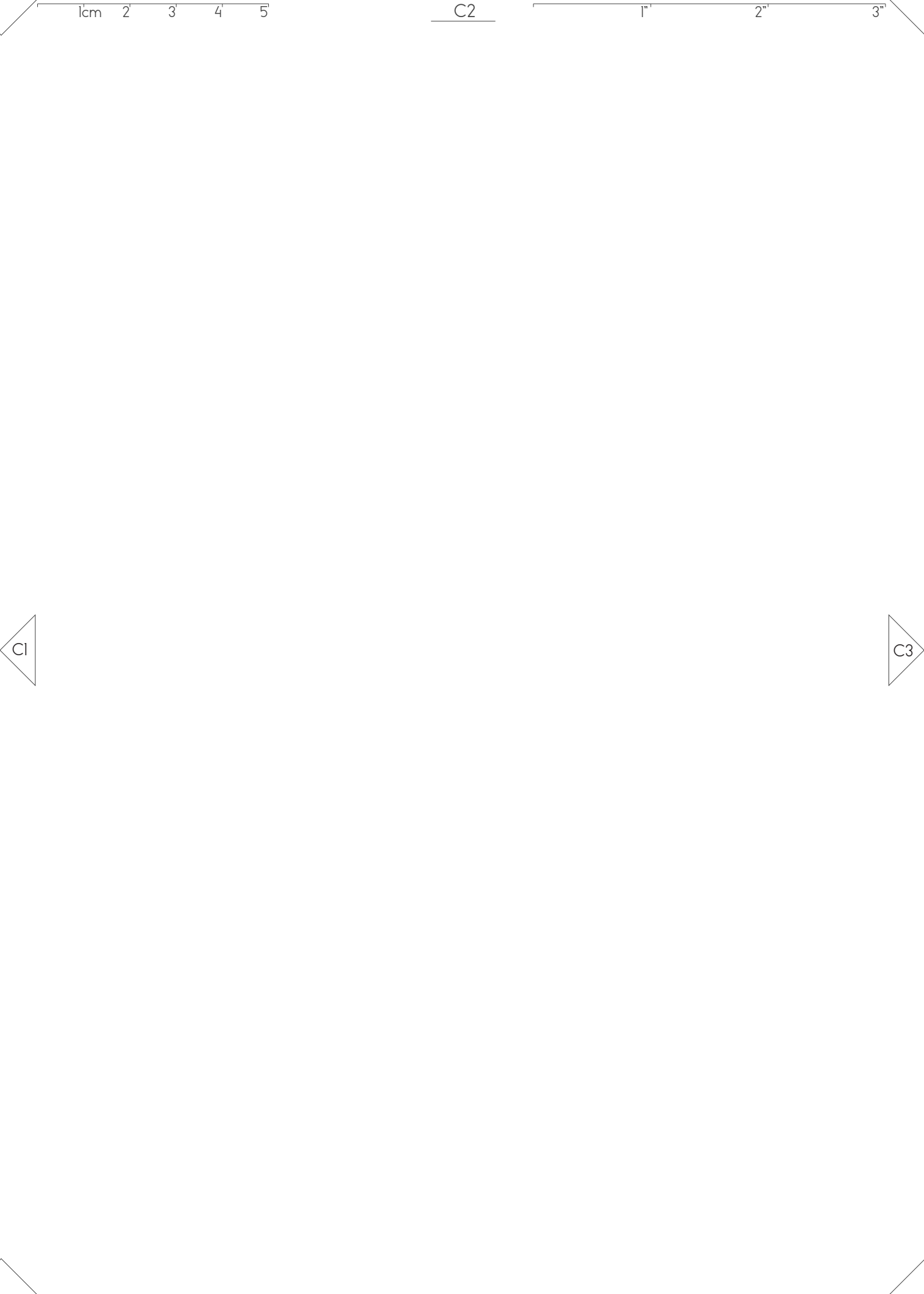
B5

B7

CENTRE FRONT / FOLD LINE

CRAIN LINE

C2



1cm 2 3 4 5

C2

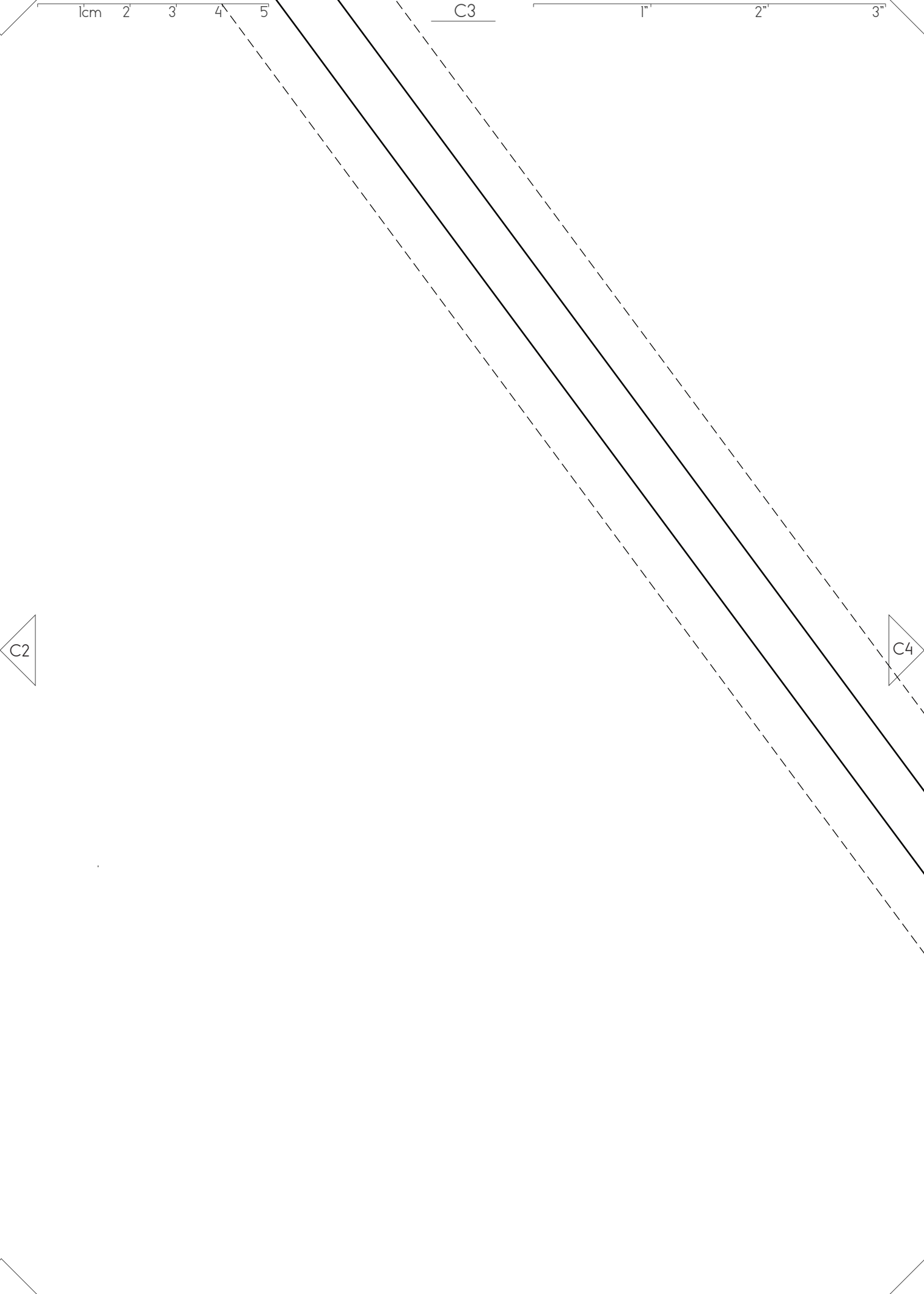
1"

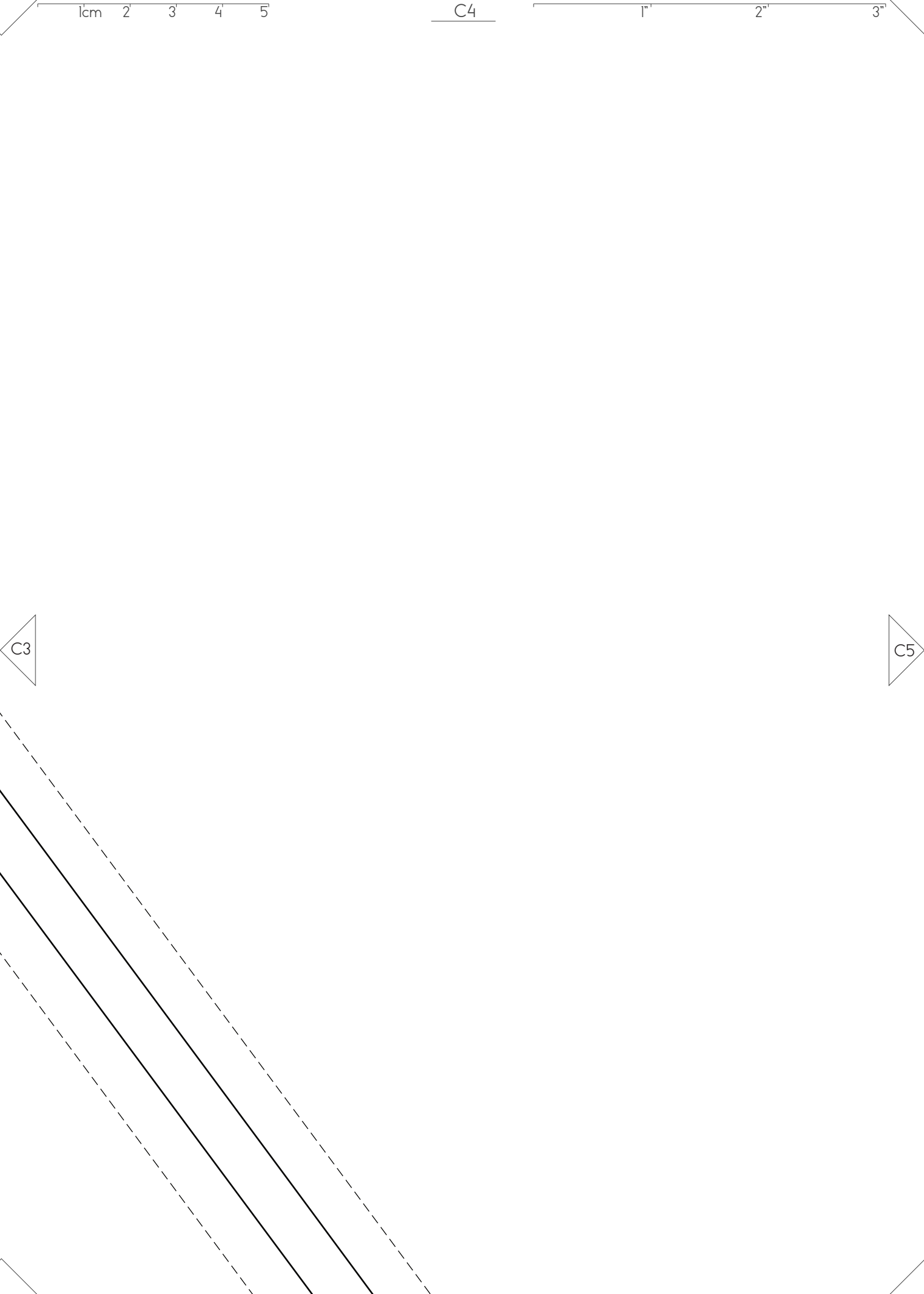
2"

3"

C1

C3







UK10

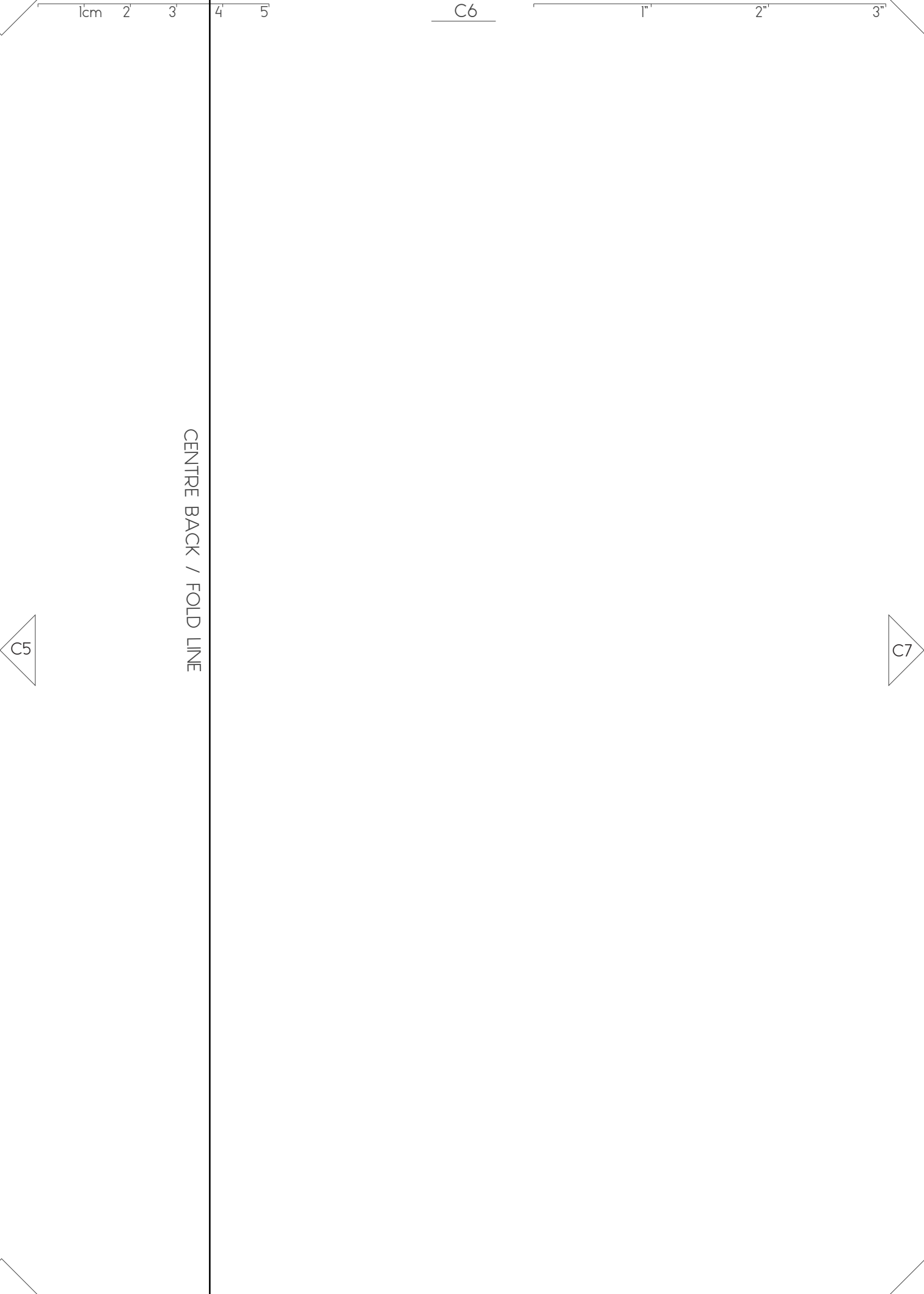
For more patterns in a range
of sizes, with full instructions
sets - visit www.ralphpink.com

GRAIN LINE

C5

C6

C4



1cm

2

3

4

5

C6

1"

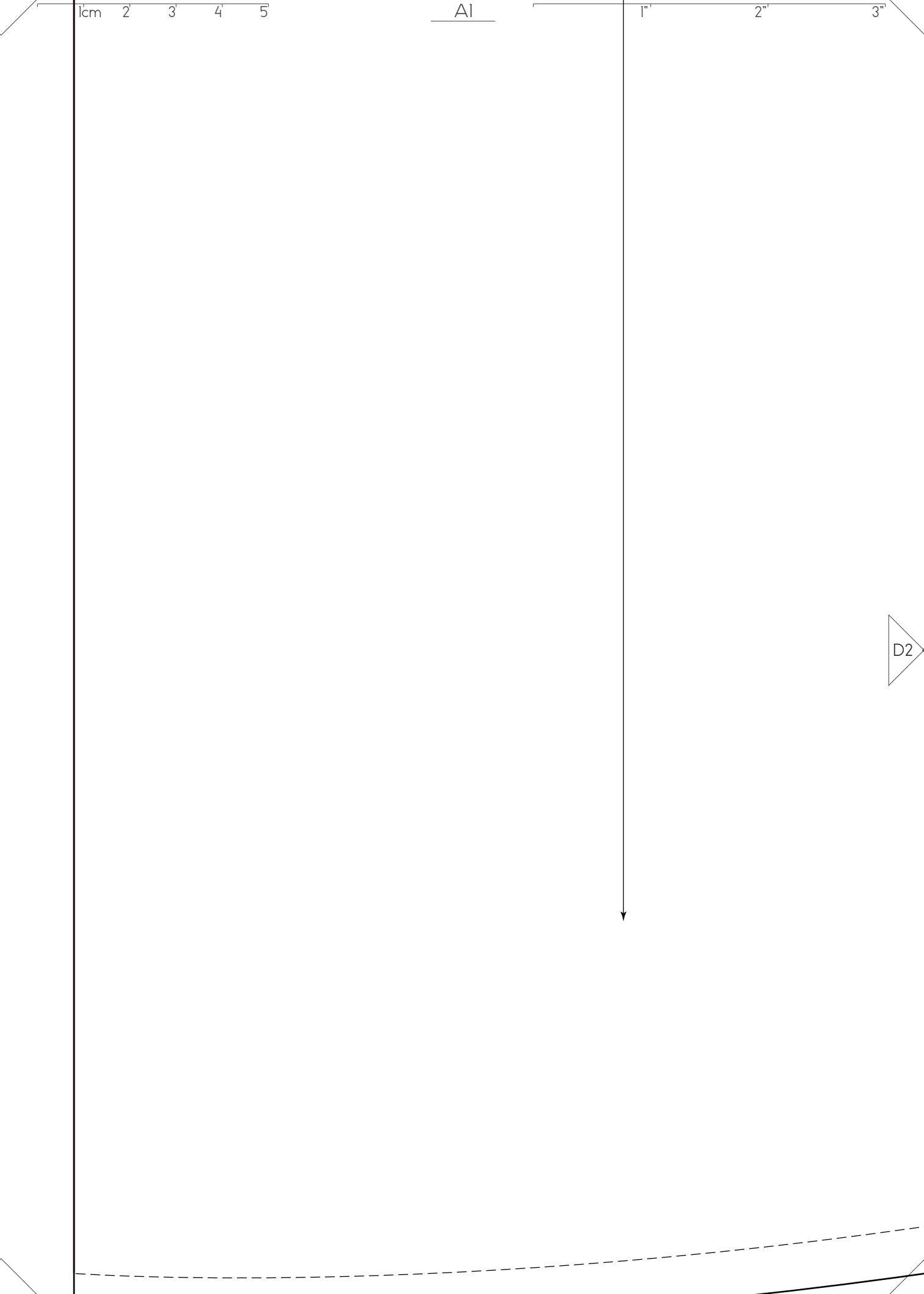
2"

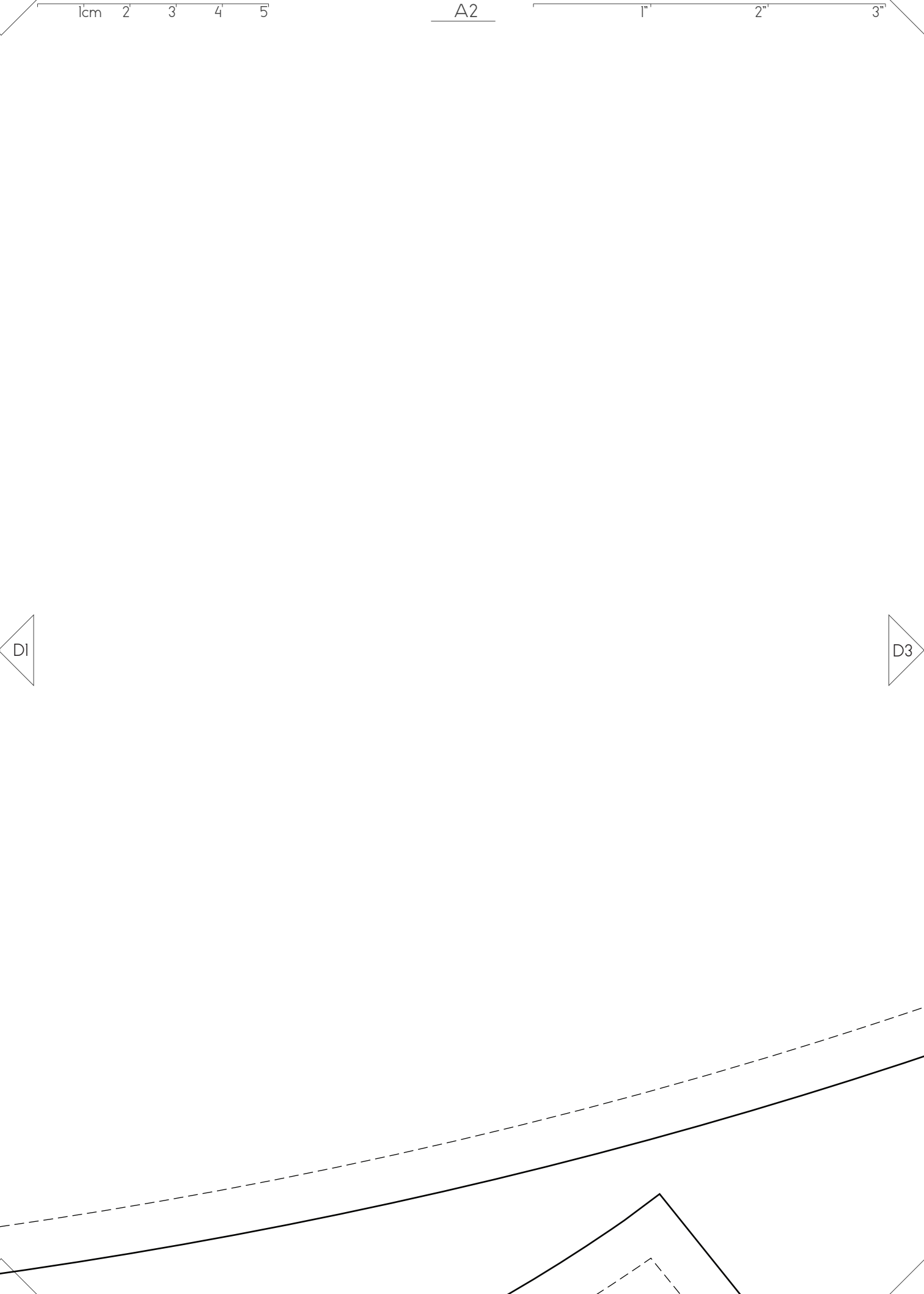
3"

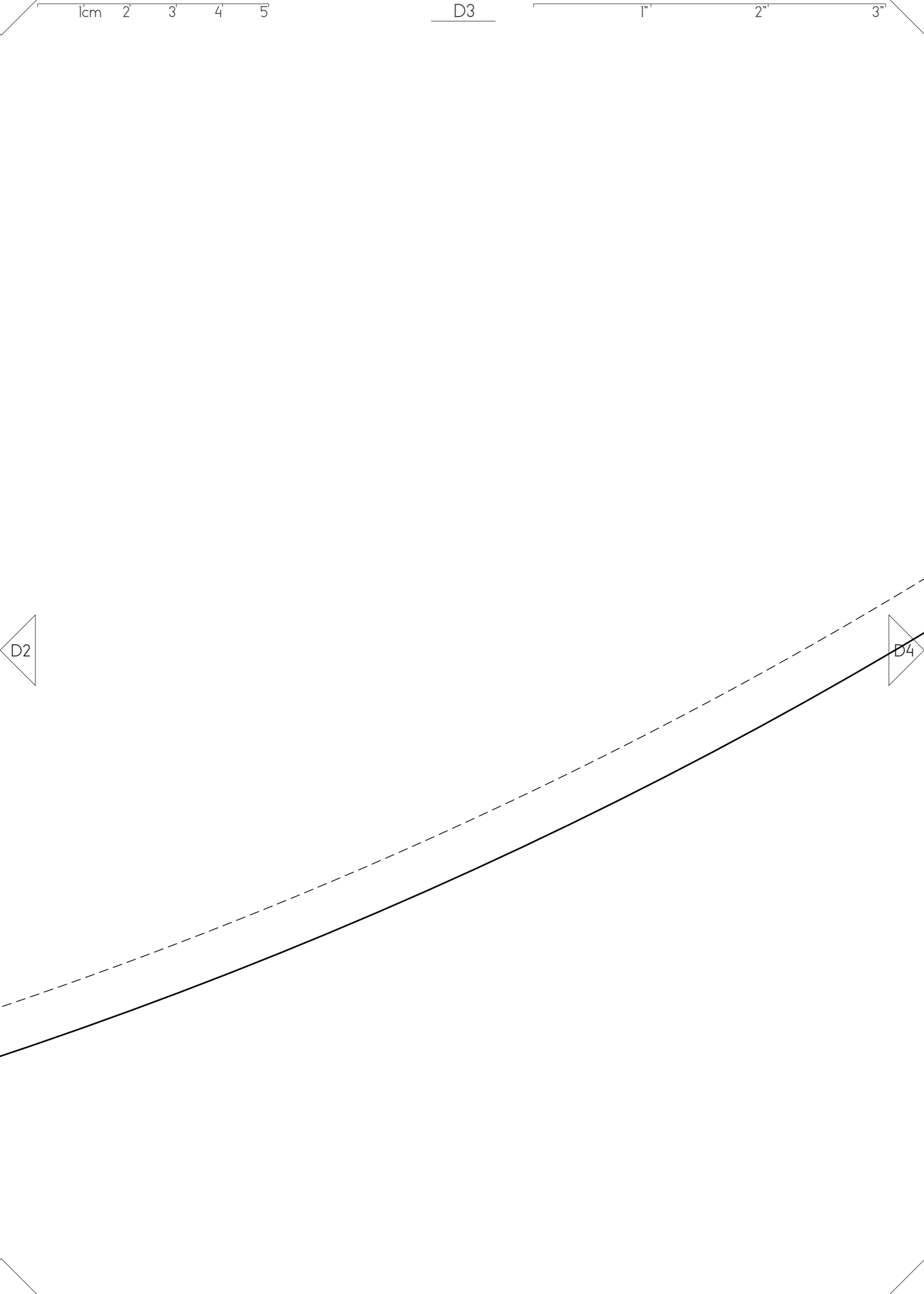
CENTRE BACK / FOLD LINE

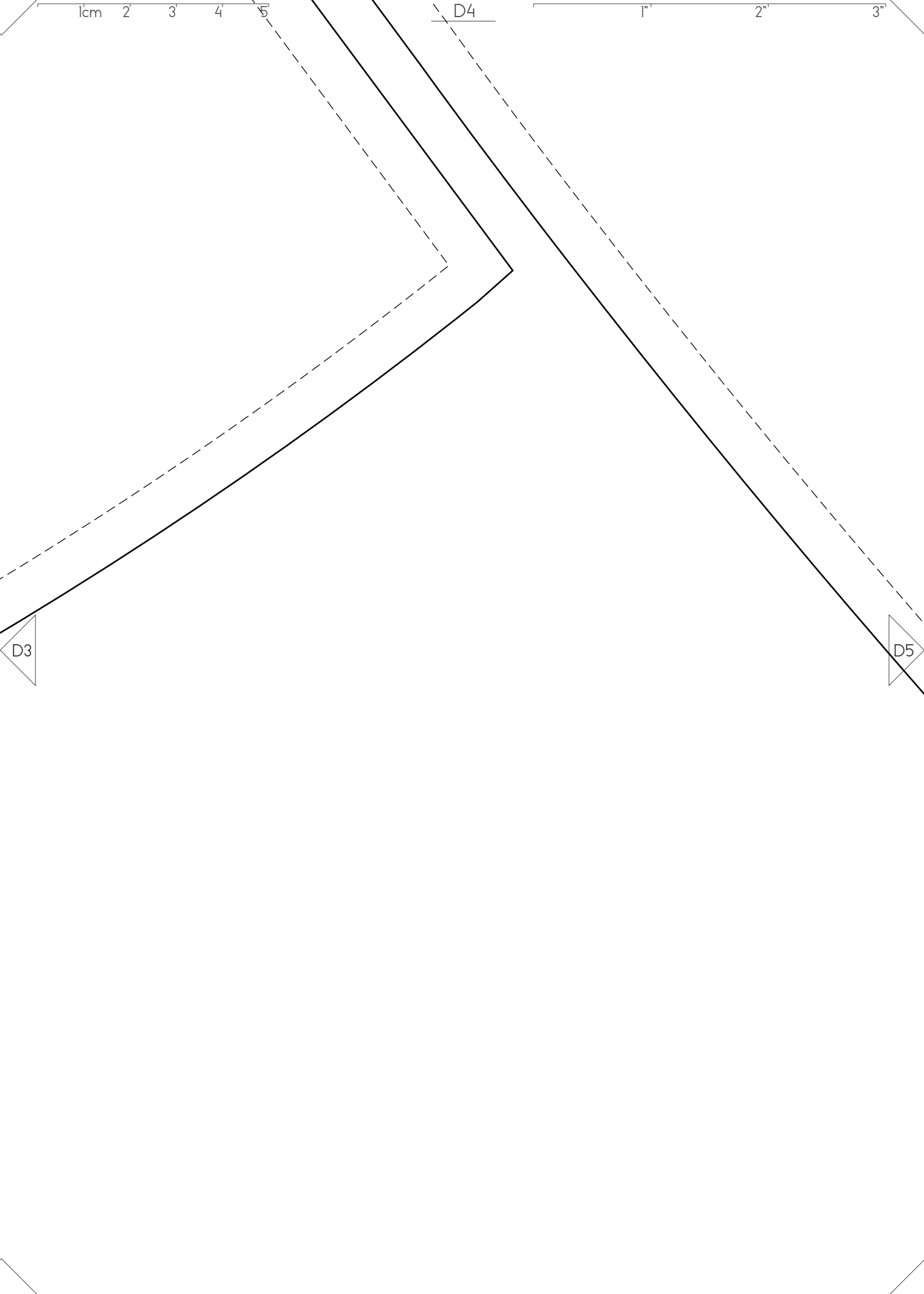
C5

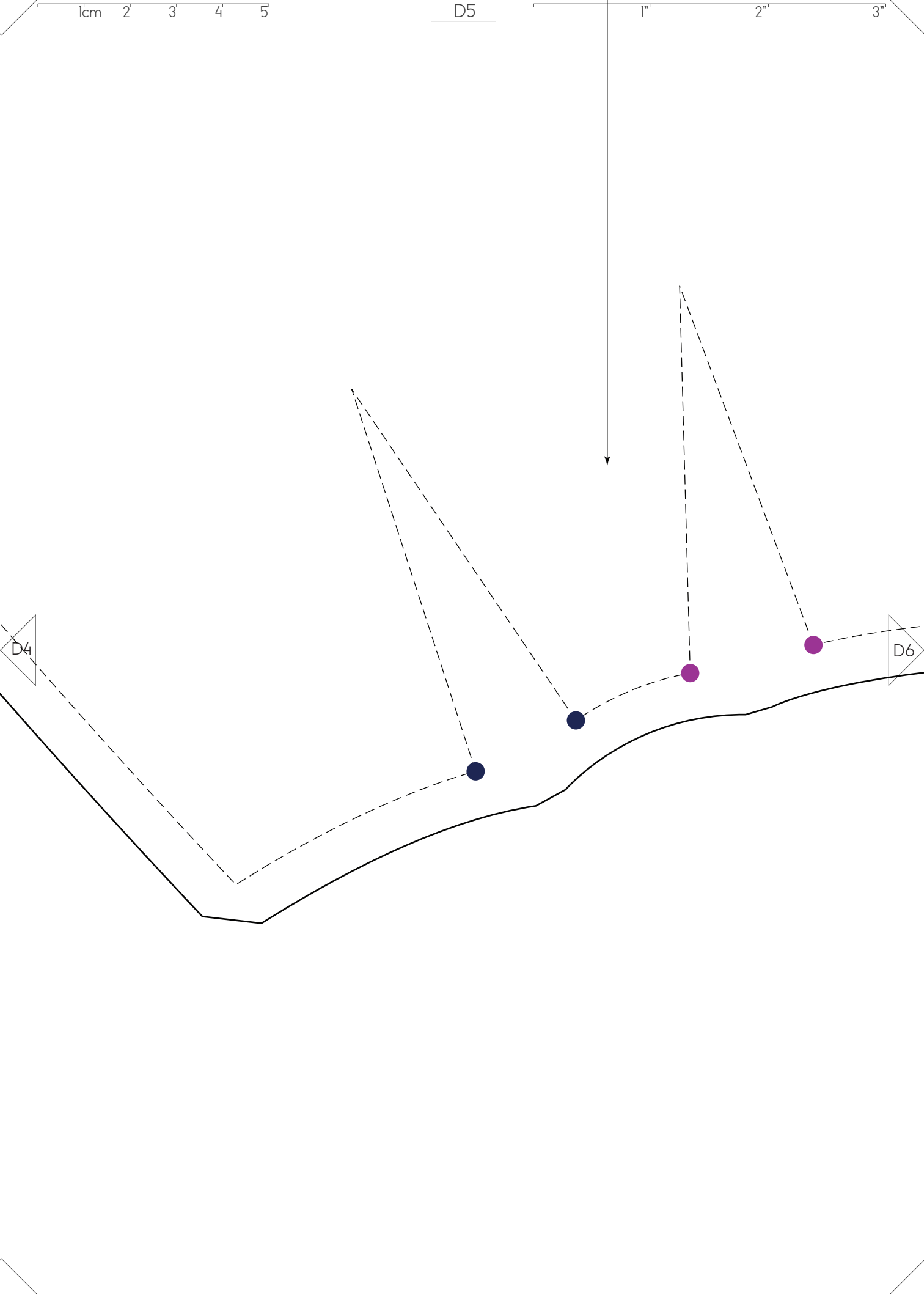
C7

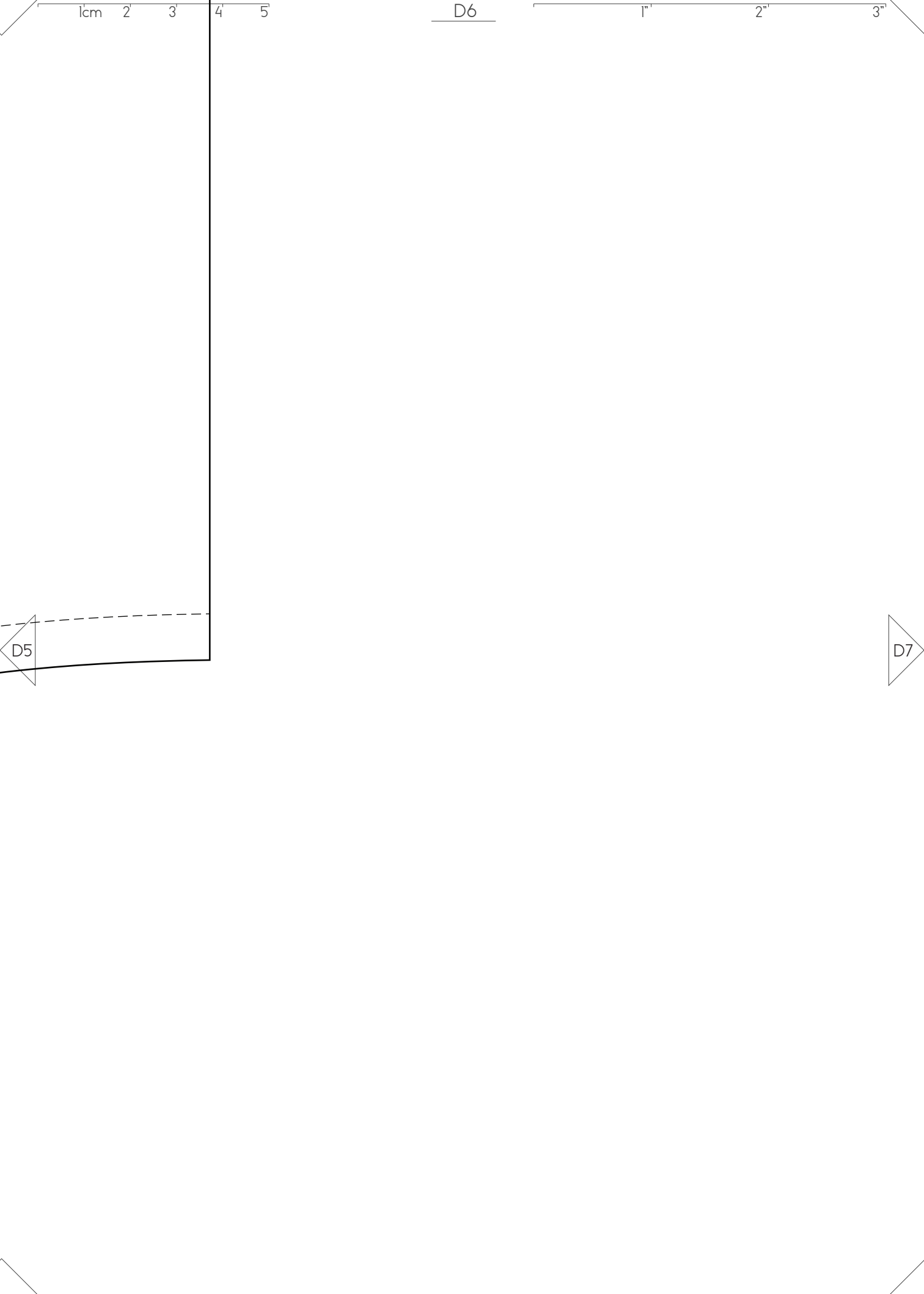


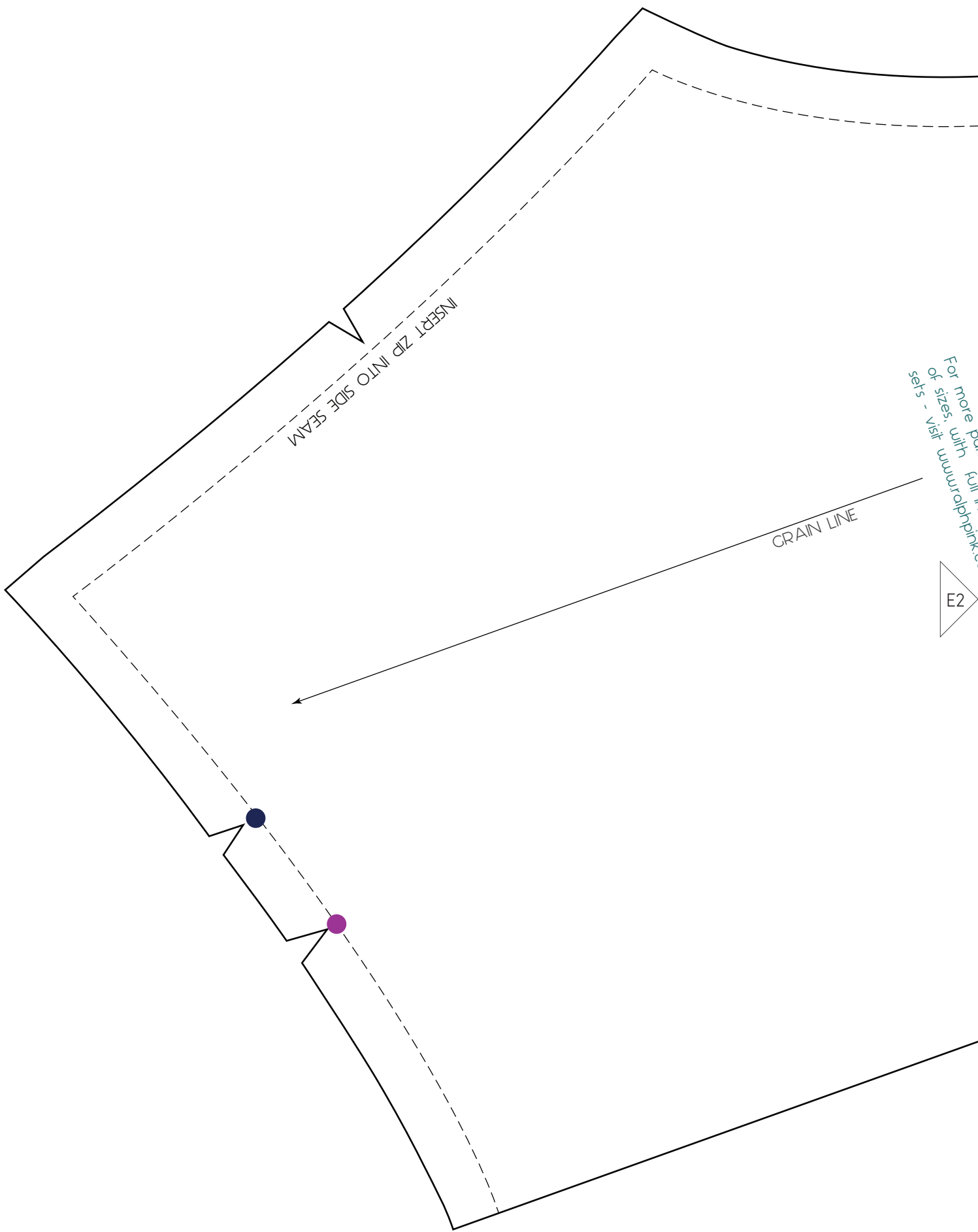








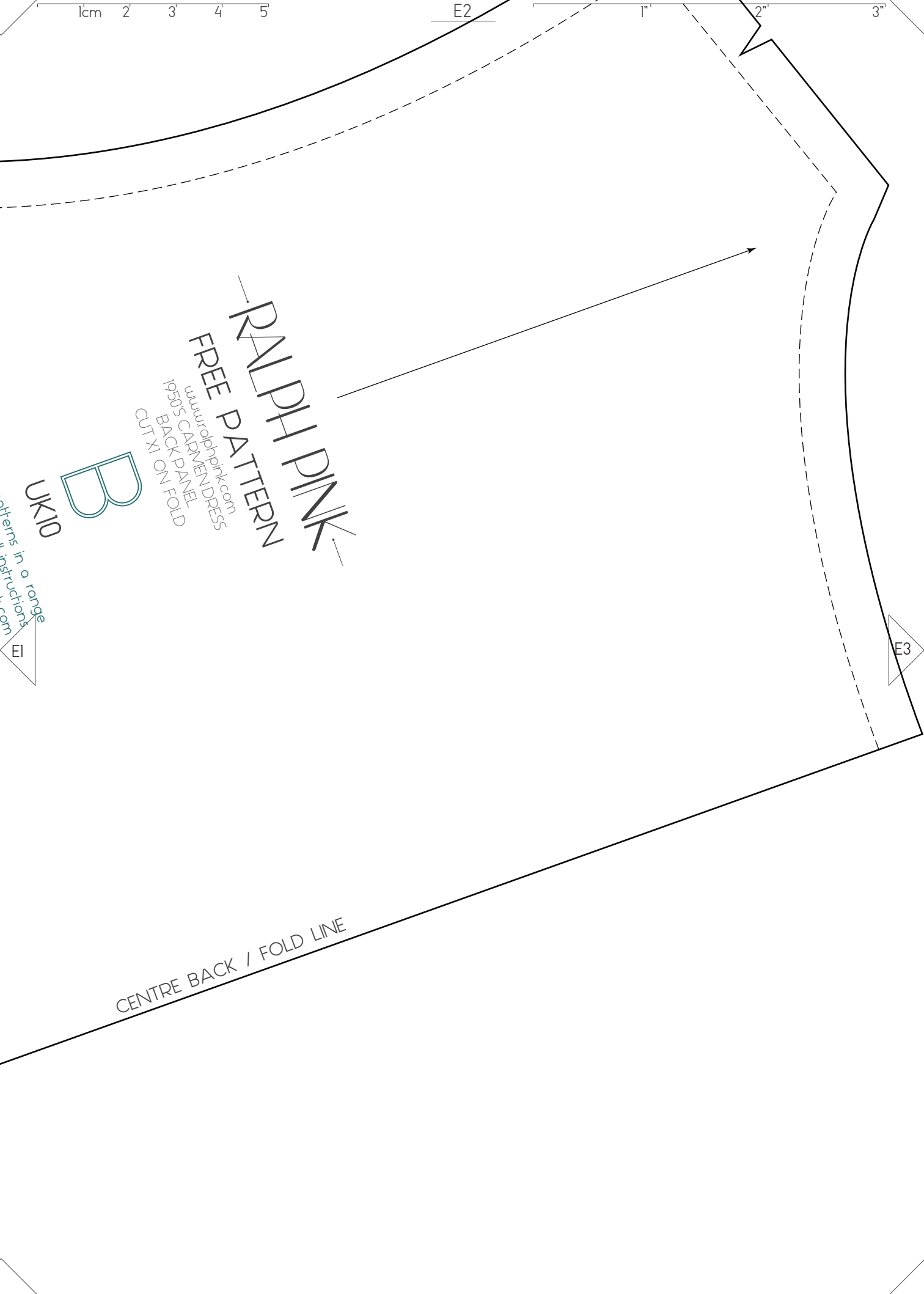




INSERT ZIP INTO SIDE SEAM

GRAIN LINE

For more patterns
of sizes with full
sets - visit www.mrphink.com



E2

1"

2"

3"

RALPH PINK

FREE PATTERN

www.ralphpink.com
1950S CARMEN DRESS
BACK PANEL
CUT X1 ON FOLD



UK100

Patterns in a range
Instructions
on
EI

CENTRE BACK / FOLD LINE

E3